

# Hotel

2024



GRECO STROM



# Welcome

**HOTEL PRODUCTS**



**60 YEARS OF RESEARCH  
& INNOVATION**



# Contents

<b>4 - 5</b>	CERTIFICATIONS	<b>62</b>	PROTECTIVE MATTRESS COVERS Cotton, Safety antibacterial
<b>6 - 7</b>	HISTORY	<b>63</b>	PROTECTIVE PILLOWCASES Cotton, Safety antibacterial
	MATTRESSES	<b>64-73</b>	PILLOWS Feather Sence – Nuvola Latex natural 40 X 60 x 10/12, 43 x 74 x 12.5 Latex natural 40 x 60 x 12.5, 40 x 60 x 15 Latex standard 45 x 65 x 14, 40 x 60 x 14, Latex standard kids Memory foam air mellow, Memory foam air mellow kids Memory foam gel Memory foam air 12-16 Memory foam 12-16 First 3D double, First 3D comfy, First 3D plus, First 3D standard, First 3D kids
<b>10 - 17</b>	EXCLUSIVE - THE AKRON COLLECTION Hilltop mattress Apical mattress Maximal mattress	<b>78 - 91</b>	BED BASES, BED BASE LEGS & BASES ACCESSORIES
<b>18 - 25</b>	THE GRAND COLLECTION Intense mattress Topmost mattress Principal mattress	<b>92 - 105</b>	HYBRID SOFAS-ARMCHAIR BED- STOOL BED Sofa bed with sliding mechanism Nafsica Sofa bunk bed Artemis Foldable sofa bed Myron Sofa corner bed with storage Sofia Sofa bed trunk Avgi Foldable sofa bed Hermione Sofa bed Klio Armchair foldable bed Lydia Armchair foldable bed Daphne Stool bed Ismini Bed bench Priamos, Mando, Pegasus, Areti
<b>26 - 47</b>	THE CLASSIC COLLECTION Inspirit mattress Ecco mattress Suit mattress Artful mattress Merit mattress Ablaze mattress Balm mattress Perla Hotel mattress Care mattress Latex mattress	<b>106-109</b>	BEDS
<b>48 - 49</b>	UNIFY SYSTEM	<b>110</b>	BEDROOM FURNITURE
<b>50 - 57</b>	TOPPER Latex 7 zones pure cotton Latex 7 zones antibacterial Memory pure cotton Memory antibacterial Foam pure cotton Foam antibacterial	<b>111</b>	SUNBED MATTRESSES

# Certifications



GRECO STROM is particularly proud that all certifications have been received by the Oeko-Tex, International Certification Institutions Bureau Veritas, LRQA Business Assurance & Swiss Approval International. These are institutions that check with frequent inspections the proper implementation, maintenance and continuous upgrading of the quality systems.



# GRECO STROM

**DESIGN, PRODUCTION, QUALITY CONTROL AND DISTRIBUTION OF THE COMPANY'S PRODUCTS HAVE BEEN CERTIFIED ACCORDING TO:**



## STANDARD 100 BY OEKO-TEX®

GRECO STROM BABY AND KID'S MATTRESSES have the international certification Oeko-Tex® Standard 100 Class I as they have emerged as products of trust – tested for harmful substances. The Oeko-Tex® Standard 100 certification concerns the absence of harmful materials and substances from the mattresses and from all the materials used for their production. The Oeko-Tex® Standard 100 is a unit system of laboratory tests and certification for textiles in raw, intermediate and final form, from all production stages and is recognized worldwide. The tests are performed by independent collaborating institutes based on the extensive OEKO-TEX® criteria. The tests take into account numerous prohibited and non-prohibited substances, which may be harmful to health. In many cases the limits of the STANDARD 100 are stricter than national and international requirements.



## SWISS APPROVAL INTERNATIONAL

GRECO STROM BABY AND KID'S MATTRESSES have been tested and certified by the Swiss Institution of Approval and International Product Quality, as compliance with applicable European directives and regulations. The products comply with the requirements of the European Standard: EN 16890:2017. Children's furniture – Mattresses for cots and cribs – Safety requirements and test methods.

THE MATTRESSES OF THE BODYTOPIA AND THE HYPNATURA SERIES AS WELL AS OUR HOTEL MATTRESSES have been tested for durability and have been certified by the Swiss Institution with the safety certification and quality of Swiss Approval Products International in compliance with existing European directives and regulations and comply with the requirements of the European standard: EN 1957: 2012 & EN 1334: 1999.



## ISO 9001 INTERNATIONAL QUALITY MANAGEMENT SYSTEM

ISO 9001 is an internationally recognized standard for quality assurance and quality management for businesses.



## ISO 14001 INTERNATIONAL ENVIRONMENTAL MANAGEMENT SYSTEM

ISO 14001 is an internationally recognized standard for environmental management by businesses. It provides guidelines and required checkpoints that must be applied to any activities having an impact on the environment.



## ISO 13485 INTERNATIONAL QUALITY ASSURANCE SYSTEM FOR MEDICAL DEVICES

THE ISO 13485 standard establishes the requirements of the quality assurance system for companies involved in designing, producing, trading, installing and providing technical support for medical devices and products.



## MARINE MATTRESSES APPROVAL BY MIRTEC SA (MATERIALS INDUSTRIAL RESEARCH & TECHNOLOGY CENTER)

UPGRADING QUALITY PRODUCTS that are required to meet specifications and are suitable to equip ships, yachts, hotels and general spaces and it is considered necessary to use mattresses with particular fire resistance, therefore GRECO STROM designs and produces a new series of mattresses that meet the requirements as outlined in Directive 2014/90 EU and Regulation (EU) 2020/1170 for MED / 3.21 bedding product group.

- SOLAS 74 Reg. II-2/3, Reg. II-2/9 & Reg. X / 3 &
- IMO Res. MSC. 307 (88) – (2010 FTP Code) Annex I, Part 9



## ALTERNATIVE PACKAGING MANAGEMENT

WITH ABSOLUTE RESPECT TO THE ENVIRONMENT, GRECO STROM belongs to the innovators of the alternative packaging management system in collaboration with the Greek Recycling Recovery Company.

# History

**SINCE 1964, OUR DEDICATION ON QUALITY HAS BECOME A HABIT, A WAY OF LIFE, WORK AND CREATION.**



## 1964

THE COMPANY IS FOUNDED BY MR. FOTIS GKOTSOPOULOS and is active in the manufacture of handmade cotton mattresses.

## 1976

PURCHASE OF 5,000 m<sup>2</sup> PRIVATELY OWNED AREA and construction of factory building of 1,500 m<sup>2</sup> in Mandra, Attica.

## 1980

PURCHASE OF MACHINERY EQUIPMENT and production of mattresses with springs.

## 1986

MR. MARIOS GKOTSOPOULOS son of the founder enters the company as a partner.

## 1991

GRECO STROM EXPANDS after it extends its factory building to 3,000 m<sup>2</sup>.

## 1997

MR. CHRIS GKOTSOPOULOS son of the founder enters the company as a partner.

## 1998

OUR COMPANY EXTENDS ITS ACTIVITY by studying, designing and producing baby mattresses, based on the most stringent international standards.

## 2000

COMPANY CERTIFICATION based on the International Quality Management System ISO 9001.

## 2003

INVESTMENTS ARE MADE with upscale and modern mechanical equipment and the company proceeds to innovative design and production of box mattresses.

## 2004

- MATTRESS SUPPLY ASSIGNMENT for the OLYMPIC GAMES.

- CERTIFICATION OF THE COMPANY based on the International Environmental Management System ISO 14001.

## 2005

- EXPORT ACTIVITY in Cyprus.

- INCORPORATION OF THE COMPANY as a member of ISPA (International Sleep Products Association).

## 2006

- ASSIGNMENT FOR SUBMARINES AND SHIPS OF THE NAVY with mattresses certified according to specifications (International Maritime Organization)

- AWARD OF THE ECO LABEL under the Register number EL / 014/0.

## 2007

- OUR MATTRESS STRENGTH IS VERIFIED by the test EN 1957 in the AIDIMA specialized laboratory in Spain.

- EXPORT ACTIVITY in Balkan countries.

## 2008

- EXPORT ACTIVITY in Russia.

## 2012

- CERTIFICATION OF THE COMPANY based on the ISO 13485 International Medical Product Quality System.

- STUDY, DESIGN AND PRODUCTION OF HOSPITAL BEDS with CE certification and registration in the Register Manufacturers of Category I Medical Devices from EOF.

## 2013

- GRECO STROM CONTINUES TO EXPAND after it extends its factory building to 6,000 m<sup>2</sup>.

## 2015

- GRECO STROM INNOVATES by designing and producing mattresses that go beyond expectations. The advantages of a handmade mattress structure are complied with transcendental technological development, offering the new generation of LITHOS mattresses.

# Greco Strom

## 2017

INVESTING in pioneering innovative mechanical equipment.

## 2018

- THE BABY MATTRESSES OF GRECO STROM are tested and certified by the Swiss Certification for Safety and Product Quality Swiss Approval International and meet the requirements of the European Standard: EN 16890: 2017.

- EXTENSION of privately-owned building facilities to 16,000 m<sup>2</sup>.

## 2019

- UPGRADING QUALITY PRODUCTS that are required to meet specifications and are suitable to equip ships, yachts, hotels and general spaces and it is considered necessary to use mattresses with particular fire resistance, therefore GRECO STROM designs and produces a new series of mattresses that meet the requirements as outlined in EU Regulation 2017/306 for MED / 3.21 bedding product group.

- SOLAS 74 Reg.II-2/3, Reg.II-2/9 & Reg. X/3 &

- IMO Res. MSC. 307(88)-(2010 FTP Code) Annex 1, Part 9.

- EXPORT ACTIVITY in Czech Republic, Italy and Romania.

- INVESTMENTS ARE MADE with upscale and modern mechanical equipment

- GRECO STROM WAS AWARDED the "Diamonds of the Greek Economy 2019" as one of the diamonds of the Greek economy!

## 2020

- GRECO STROM DRIVEN BY INSPIRATIONAL AND CREATIVE PRODUCTION HAS CREATED THE NEW BODYTOPIA MATTRESS COLLECTION AND THE GRAND COLLECTION MATTRESSES FOR HOTEL EQUIPMENT. Mattresses that respond to the desired to rejuvenate and relax within the most personal eight hours of the day. Positive emotions that accompany the experience of good sleep. Moments of dreaming, reminiscence, rest, moments of true psychosomatic uplift and satisfaction.

- Construction of an independent bed production unit 1000 m<sup>2</sup>.

- Extension of privately owned building by 500 m<sup>2</sup>.

## 2021

- GRECO STROM creates online store shop.grecostrom.gr, for direct purchases and distribution of household equipment products as well as baby and children's sleep products.

- GRECO STROM WAS AWARDED the "Diamonds of the Greek Economy 2021" as one of the diamonds of the Greek economy!

## 2022

- GRECO STROM through constant search and use of innovative technologies and guided by the collective contribution to the environment, evolves and presents its new basic mattress series, the Hynatura series. Mattresses covered with the new AEIFORIA fabric, effect the processing of plastic recycled bottles, environmentally and human friendly.

- CERTIFICATION OF BABY MATTRESSES based on international standards that ensure hygiene, OEKO -TEX STANDARD 100.

# Mattresses

## MATTRESSES COLLECTIONS

→ EXCLUSIVE – THE AKRON COLLECTION  
Hilltop, Apical, Maximal

→ THE GRAND COLLECTION  
Intense, Topmost, Principal

→ THE CLASSIC COLLECTION  
Inspirit, Ecco, Suit, Artful, Merit,  
Ablaze, Balm, Perla Hotel, Care, Latex



# Exclusive - The Akron Collection

CREATING THE IDEAL SUITE



GRECO STROM produces mattresses that ensure full spine support, actively minimizing pressure points while contributing to the increase of blood circulation. As a result, the muscles can relax, letting you stay in your preferred sleeping position for longer duration and achieving a calm experience and undisturbed sleep.

Each mattress of the **Akron** collection is designed to provide excellent support and durability while at the same time the natural layers of wool and the pure viscose outer fabric, help to the correct setting of the ideal sleep temperature.



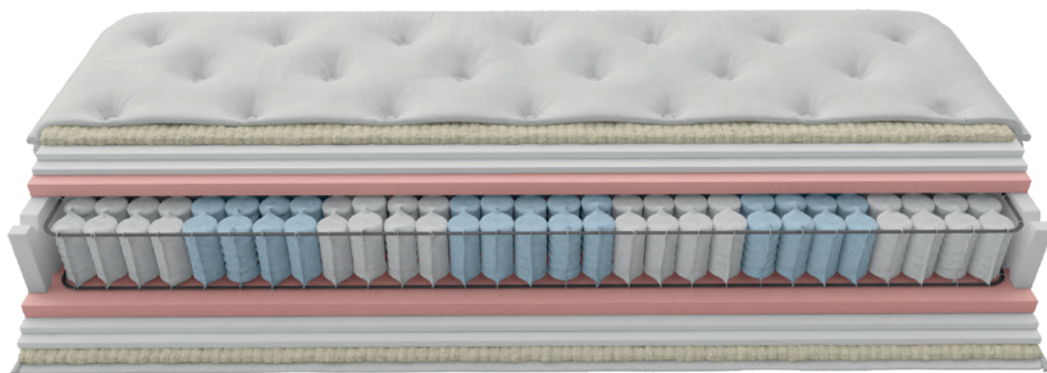
# Mattresses collection

This new standard version goes beyond the previous elements, leading to a new sleep dimension, where the advantages of a handmade mattress are composed with the transcendental technological development, offering you the new generation **Akron** mattresses of incomparable quality and high aesthetics.



# Hilltop

**ACTIVATION OF THE SENSES  
THROUGH ABSOLUTE ERGONOMICS!**



**HANDLES**

For easy rotation of the mattress.



**ZIPPER**

Allows the optical control of materials.

Mattress height 30 cm (+/- 1 dimensional variation due to material nature).

# Exclusive – The Akron Collection

## PURE VISCOSE FIRE RETARDANT FABRIC

AT THE HEART OF THE TREE TRUNK, CELLULOSE IS FOUND. After special treatment, it offers us unique gloss fibers from which high quality fabric is produced. Viscose is a very durable fabric which offers great comfort during movements. Also, it has a sensation of hugging the body harmoniously so it is highly requested in textile production. The PURE VISCOSE fabric has excellent heat-regulating properties. Produced according to the specifications of the European OEKO TEX STANDARD 100 & slow flammable.

## FIBER WAVE LANA

ECO-WOOL LAYER. It contains no chemical resins and glues, it is fully recyclable and hypoallergenic. An exclusively patented product technology is its structure, as the fibers are arranged in sinusoidal order, thus forming a set of waves having a horizontal arrangement. This ensures a great flexibility, excellent restoration and durability, even under high compression conditions.

## DOUBLE SPACE VISCO ELASTIC SOFT

DOUBLE LAYER OF SPECIALIZED QUILTED FOAM MATERIAL. Works according to body temperature, while contributes to maximum anatomical performance. This product was originally used by NASA in laboratory studies.

## QUILTED 5M ARTWORK

GRECO STROM INNOVATES IN THE DESIGN AND QUALITY OF QUILTING. It includes in its production, modern technology machines capable of operating precisely a lot of materials together. In this way the advantages of handmade mattresses are combined with the technological evolution, resulting in extremely soft sensation, great comfort and aesthetically perfect result.

## SPACE VISCO ELASTIC FIRM LAYER

HIGH ELASTIC VISCOSE (MEMORY FOAM) used as an inner layer which works according to body temperature and minimizes pressure points, causing proper blood circulation in the spine and limbs. This material creates "non-gravity" conditions, so it was used by NASA to relieve the pressure that astronauts had to face.

## 7 ZONE POCKET SPRINGS 500S

UNIT OF INDEPENDENT SPRINGS hosted separately in cloth pouches. The 7 different support zones allow individual elasticity of each spring and provide maximum support. This regulates the pressure distribution and ergonomic adjustment of body weight is ensured. The rate of 260 pcs per m<sup>2</sup> is maintained.

## FRAME SUPPORT

STAINLESS STEEL PERIMETER FRAME ensuring spring stabilization and the mattress dimension.

## "V" FOAM EXTRA SUPPORT

HIGH DENSITY FOAM FOR BORDER SUPPORT OF THE MATTRESS. In addition, with special notches V-shaped along the length sides and with its open cellular structure, it ensures excellent ventilation of the mattress.

## 10 YEARS GUARANTEE



Swiss Approval International Certification.

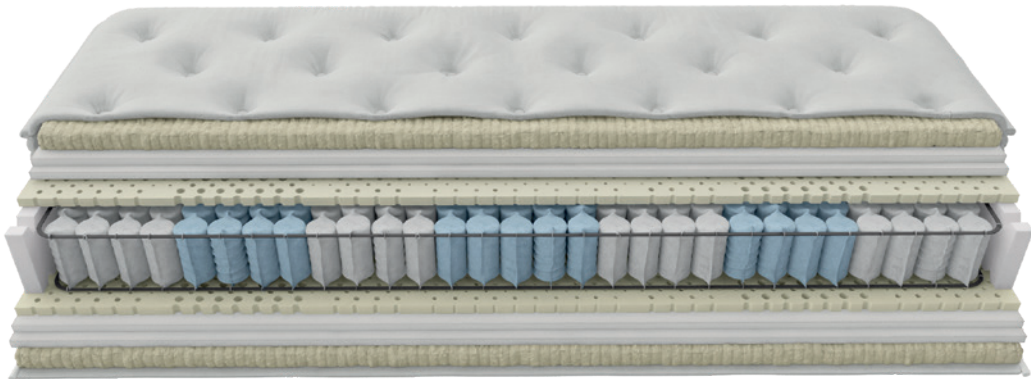
This product has been tested for durability and complies with the requirements of the European standard: EN 1957:2012 & EN 1334:1999.

Insert materials are described in the order they are placed in the mattress for each two sides.

Produced in all desired dimensions.

# Apical

UNPRECEDENTED RELAXATION EXPERIENCE!



**HANDLES**

For easy rotation of the mattress.



**ZIPPER**

Allows the optical control of materials.

Mattress height 30 cm (+/- 1 dimensional variation due to material nature).

# Exclusive – The Akron Collection

## PURE VISCOSE FIRE RETARDANT FABRIC

AT THE HEART OF THE TREE TRUNK, CELLULOSE IS FOUND. After special treatment, it offers us unique gloss fibers from which high quality fabric is produced. Viscose is a very durable fabric which offers great comfort during movements. Also, it has a sensation of hugging the body harmoniously so it is highly requested in textile production. The PURE VISCOSE fabric has excellent heat-regulating properties. Produced according to the specifications of the European OEKO TEX STANDARD 100 & slow flammable.

## FIBER WAVE LANA

ECO-WOOL LAYER. It contains no chemical resins and glues, it is fully recyclable and hypoallergenic. A exclusively patented product technology is its structure, as the fibers are arranged in sinusoidal order, thus forming a set of waves having a horizontal arrangement. This ensures a great flexibility, excellent restoration and durability, even under high compression conditions.

## DOUBLE HIGH - RESILIENCE FOAM HR

THE STATE-OF-THE-ART HIGH QUALITY FOAM with its open cellular structure allows breathing inside the mattress and at the same time because of its high density ensures maximum performance. Its behavior provides high elasticity, excellent recovery and durability even after years of use. A double layer of material is used on each side of the mattress. A double layer of material is used on each side of the mattress.

## QUILTED 5M ARTWORK

GRECO STROM INNOVATES IN THE DESIGN AND QUALITY OF QUILTING. It includes in its production, modern technology machines capable of operating precisely a lot of materials together. In this way the advantages of handmade mattresses are combined with the technological evolution, resulting in extremely soft sensation, great comfort and aesthetically perfect result.

## 7 MULTI-ZONE LATEX LAYER

LATEX IS A WHITE, MILKY LIQUID THAT COMES FROM THE EXTRACTS OF THE HEVEA BRASILIENSIS TROPICAL TREE and is characterized by its unique flexibility and excellent restoration. Thanks to its seven different support zones it ensures an evenly distribution of body pressure during sleep. In this way, it promotes proper blood circulation in the spine and the limbs. Its numerous holes allow for optimum ventilation of the mattress, preventing the growth of microbes, fungi and mites, thus ensuring the best hygiene conditions. GRECO STROM guarantees the use of the best latex quality selected from controlled plantations and is strictly tested before and during the production process.

## 7 ZONE POCKET SPRINGS 500S

UNIT OF INDEPENDENT SPRINGS hosted separately in cloth pouches. The 7 different support zones allow individual elasticity of each spring and provide maximum support. This regulates the pressure distribution and ergonomic adjustment of body weight is ensured. The rate of 260 pcs per m<sup>2</sup> is maintained.

## FRAME SUPPORT

STAINLESS STEEL PERIMETER FRAME ensuring spring stabilization and the mattress dimension.

## “V” FOAM EXTRA SUPPORT

HIGH DENSITY FOAM FOR BORDER SUPPORT OF THE MATTRESS. In addition, with special notches V-shaped along the length sides and with its open cellular structure, it ensures excellent ventilation of the mattress.

## 10 YEARS GUARANTEE



Swiss Approval International Certification.

This product has been tested for durability and complies with the requirements of the European standard: EN 1957:2012 & EN 1334:1999.

# Maximal

ΜΟΝΑΔΙΚΑ ΑΝΑΠΑΥΤΙΚΗ ΑΙΣΘΗΣΗ ΜΕ ΑΝΤΟΧΕΣ!



**HANDLES**

For easy rotation of the mattress.



**ZIPPER**

Allows the optical control of materials.

Mattress height 30 cm (+/- 1 dimensional variation due to material nature).



# Exclusive – The Akron Collection

## PURE VISCOSE FIRE RETARDANT FABRIC

AT THE HEART OF THE TREE TRUNK, CELLULOSE IS FOUND. After special treatment, it offers us unique glass fibers from which high quality fabric is produced. Viscose is a very durable fabric which offers great comfort during movements. Also, it has a sensation of hugging the body harmoniously so it is highly requested in textile production. The PURE VISCOSE fabric has excellent heat-regulating properties. Produced according to the specifications of the European OEKO TEX STANDARD 100 & slow flammable.

## FIBER WAVE LANA

ECO-WOOL LAYER. It contains no chemical resins and glues, it is fully recyclable and hypoallergenic. A exclusively patented product technology is its structure, as the fibers are arranged in sinusoidal order, thus forming a set of waves having a horizontal arrangement. This ensures a great flexibility, excellent restoration and durability, even under high compression conditions.

## DOUBLE HIGH - RESILIENCE FOAM HR

THE STATE-OF-THE-ART HIGH QUALITY FOAM with its open cellular structure allows breathing inside the mattress and at the same time because of its high density ensures maximum performance. Its behavior provides high elasticity, excellent recovery and durability even after years of use. A double layer of material is used on each side of the mattress. A double layer of material is used on each side of the mattress.

## QUILTED 5M ARTWORK

GRECO STROM INNOVATES IN THE DESIGN AND QUALITY OF QUILTING. It includes in its production, modern technology machines capable of operating precisely a lot of materials together. In this way the advantages of handmade mattresses are combined with the technological evolution, resulting in extremely soft sensation, great comfort and aesthetically perfect result.

## 7 MULTI-ZONE LATEX LAYER

LATEX IS A WHITE, MILKY LIQUID THAT COMES FROM THE EXTRACTS OF THE HEVEA BRASILIENSIS TROPICAL TREE and is characterized by its unique flexibility and excellent restoration. Thanks to its seven different support zones it ensures an evenly distribution of body pressure during sleep. In this way, it promotes proper blood circulation in the spine and the limbs. Its numerous holes allow for optimum ventilation of the mattress, preventing the growth of microbes, fungi and mites, thus ensuring the best hygiene conditions. GRECO STROM guarantees the use of the best latex quality selected from controlled plantations and is strictly tested before and during the production process.

## SC FIBER FILTER

STERILE COTTON FIBER INSULATION FILTER that offers the most ideal insulation over the springs.

## MINI BONNELL INNERSPRINGS

THIS SPRING SYSTEM COMBINES THE BENEFITS OF A BONNELL SYSTEM WITH GRECO STROM EXPERIENCE, high quality wire selection and absolute precision in production as the small diameter of each spring achieves the maximum number of springs per m<sup>2</sup> providing the most powerful core for a mattress of high quality, stability and durability.

The rate of 196 pcs per m<sup>2</sup> is maintained.

## “V” FOAM EXTRA SUPPORT

HIGH DENSITY FOAM FOR BOARDER SUPPORT OF THE MATTRESS. In addition, with special notches V-shaped along the length sides and with its open cellular structure, it ensures excellent ventilation of the mattress.

## 10 YEARS GUARANTEE



Swiss Approval International Certification.

This product has been tested for durability and complies with the requirements of the European standard: EN 1957:2012 & EN 1334:1999.

# The Grand Collection

AFFORDABLE LUXURY FOR DREAMY HOSPITALITY



Through the perfect anatomy expertise, the advanced materials and the state-of-the-art machinery, **GRECO STROM** ensures a beneficial sleep resulting from true relaxation.

All mattresses of the **Grand Collection** ensure point support, whatever the sleep position- (adventurous or not.) Combining the high elasticity of materials and the adaptability of the human body, the absorption of vibrations became possible.



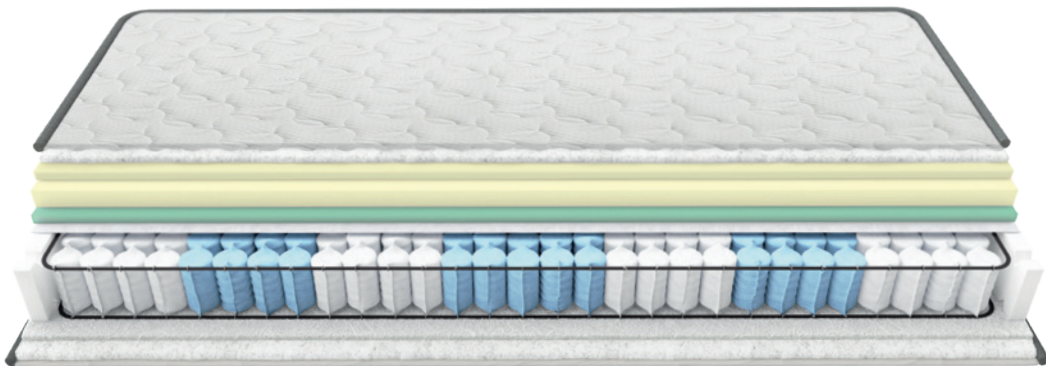
# Mattresses collection

The experience of a good sleep is no longer an impossible mission. **The Grand Collection** series did the impossible: the most personal eight hours of the day to be full of rejuvenation, relaxation, psychosomatic uplift and satisfaction.



# Intense

THE ELASTIC VISCOSE RELIEF CUSHION MINIMIZES PRESSURE POINTS, CREATING “WEIGHTLESS” CONDITIONS.



HANDLES

For easy rotation of the mattress.



ZIPPER

Allows the optical control of materials.

# Grand Collection

## TENCEL FABRIC FIRE RETARDAND

FOR PRODUCTION OF TENCEL FABRIC, we use yarn derived from wood pulp. The special characteristic of this yarn is the cool and silky touch, a texture which gives a natural 'glow'. The TENCEL fabric is breathable with very good moisture absorption characteristics and stands out for its thermoregulatory properties. In addition, it offers great comfort to movements while embracing harmoniously the body. The perfect combination of excellent durability, soft sensation and luxurious appearance.

## POLYESTER WAD

WHITE WAD WITH CERTIFIED HYPOALLERGENIC PROPERTIES from 100% polyester antibacterial fiber. It allows the internal ventilation of the mattress and removes moisture. It has excellent strength, elasticity and resilience.

## MEMORY FOAM SOFT INN

ELASTIC VISCOSE (MEMORY FOAM) OF INCREASED DENSITY, used in quilting and works according to body temperature. Minimizes pressure points, causing proper spinal and limb perfusion. This material creates "non-gravity" conditions, so it was used by NASA to relieve the pressure that astronauts had to deal with.

## QUILTED HILL

QUILT PROCESS FOR EXTREMELY SOFT SENSATION, great comfort and aesthetically perfect result achieved by state-of-the-art machines.

## MEMORY FOAM SOFT LAYER

ELASTIC VISCOSE LAYER (MEMORY FOAM) OF INCREASED DENSITY which works according to body temperature. Minimizes pressure points, causing proper spinal and limb perfusion. This material creates "non-gravity" conditions, so it was used by NASA to relieve the pressure that astronauts had to deal with.

## GRAND RELIEF FOAM LAYER

FOAM LAYER which allows internal ventilation and works perfectly with the MEMORY FOAM SOFT LAYER. The result is the maximum performance behavior of the mattress.

## GRAND RELIEF FOAM LAYER

FOAM LAYER which allows internal ventilation and works perfectly with the MEMORY FOAM SOFT LAYER. The result is the maximum performance behavior of the mattress.

## 7 ZONE POCKET SPRINGS 500S

A UNIT OF INDIVIDUAL SPRINGS THAT ARE HOSTED SEPARATELY IN CLOTH POUCHES. With 7 different support zones they ensure individual elasticity and provide a high support degree. This regulates pressure distribution and ensures ergonomic fit with body weight. The rate of 260pcs per m<sup>2</sup> is maintained.

## FRAME SUPPORT

STAINLESS STEEL FRAMEWORK SUPPORT ensures spring stabilization and mattress dimension.

## UPPER BORDER SUPPORT SYSTEM

GRECO STROM through constant search and implementation of innovative technologies, has designed the new perimetric mattress support system, limiting recession in the process of the vertical pressure of its weight. It consists of increased density FOAM SUPPORT with special V-shaped notches along the sides and FOAM JUMP QUILTED SUPPORT process for the exterior mattress fabric.

## SC FIBER FILTER

FILTER FROM STERILIZED COTTON FIBERS offers ideal insulation and support.

## POLYESTER WAD

## TENCEL FABRIC FIRE RETARDAND

## 5 YEARS GUARANTEE

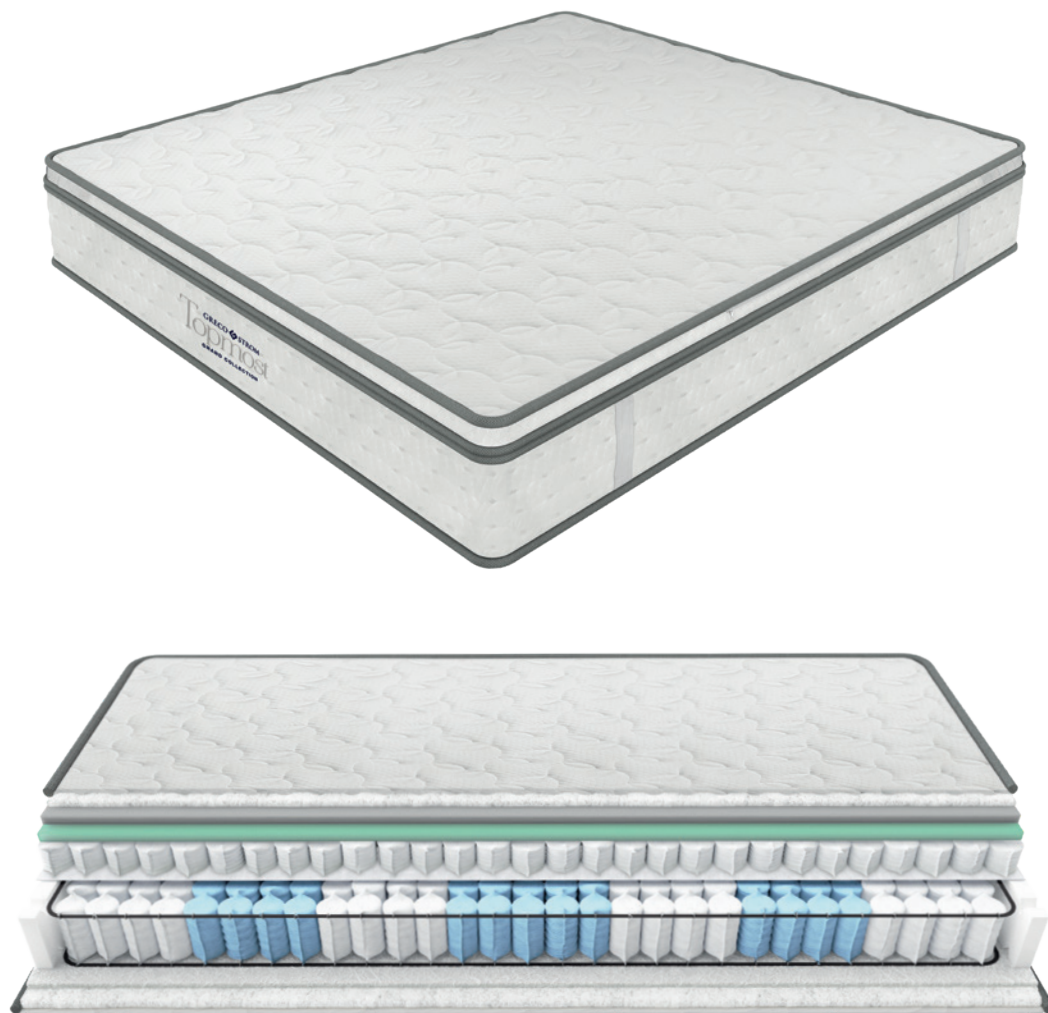


Swiss Approval International Certification.

This product has been tested for durability and complies with the requirements of the European standard: EN 1957:2012 & EN 1334:1999.

# Topmost

THE COMBINATION OF TWO DIFFERENT TYPES OF INDEPENDENT SPRINGS ENSURES INCREASED SUPPORT WHEN AND WHERE NEEDED, RESTORING THE BODY TO ITS MOST DREAMY DIMENSION.



HANDLES

For easy rotation of the mattress.



ZIPPER

Allows the optical control of materials.

# Grand Collection

## TENCEL FABRIC FIRE RETARDAND

FOR PRODUCTION OF TENCEL FABRIC, we use yarn derived from wood pulp. The special characteristic of this yarn is the cool and silky touch, a texture which gives a natural 'glow'. The TENCEL fabric is breathable with very good moisture absorption characteristics and stands out for its thermoregulatory properties. In addition, it offers great comfort to movements while embracing harmoniously the body. The perfect combination of excellent durability, soft sensation and luxurious appearance.

## POLYESTER WAD

WHITE WAD WITH CERTIFIED HYPOALLERGENIC PROPERTIES from 100% polyester antibacterial fiber. It allows the internal ventilation of the mattress and removes moisture. It has excellent strength, elasticity and resilience.

## ACTIVE FOAM INN

SOFT AND DURABLE FOAM tested and suitable for quilted mattress treatment.

## QUILTED HILL

QUILT PROCESS FOR EXTREMELY SOFT SENSATION, great comfort and aesthetically perfect result achieved by state-of-the-art machines.

## GRAND RELIEF FOAM LAYER

FOAM LAYER which allows internal ventilation and works perfectly with the MEMORY FOAM SOFT LAYER. The result is the maximum performance behavior of the mattress.

## MINI POCKET SPRINGS UNIT

THE NEW UNIT OF INDIVIDUAL SPRINGS TYPE MINI POCKET offers a high level of support and comfort. Each spring is hosted separately in fabric pockets allowing each spring unit to react completely independently. In combination with the independent spring unit POCKET SPRINGS SCAN SYSTEM it provides extra resistance when there is more pressure, which means that increased support is secured when and where needed. The maximum anatomical performance of the mattress is achieved and the rate of 260 pcs per m<sup>2</sup> is maintained.

## FLEXCOAT

A SPECIFIC FLEXIBLE AND RESISTANT 3D MATERIAL, which works as an excellent raw material protection system, thus contributing to proper function and mattress comfort.

## 7 ZONE POCKET SPRINGS 500S

A UNIT OF INDIVIDUAL SPRINGS THAT ARE HOSTED SEPARATELY IN CLOTH POUCHES. With 7 different support zones they ensure individual elasticity and provide a high support degree. This regulates pressure distribution and ensures ergonomic fit with body weight. The rate of 260pcs per m<sup>2</sup> is maintained.

## FRAME SUPPORT

STAINLESS STEEL FRAMEWORK SUPPORT ensures spring stabilization and mattress dimension.

## UPPER BORDER SUPPORT SYSTEM

GRECO STROM through constant search and implementation of innovative technologies, has designed the new perimetric mattress support system, limiting recession in the process of the vertical pressure of its weight. It consists of increased density FOAM SUPPORT with special V-shaped notches along the sides and FOAM JUMP QUILTED SUPPORT process for the exterior mattress fabric.

## SC FIBER FILTER

FILTER FROM STERILIZED COTTON FIBERS offers ideal insulation and support.

## POLYESTER WAD

## TENCEL FABRIC FIRE RETARDAND

## 5 YEARS GUARANTEE

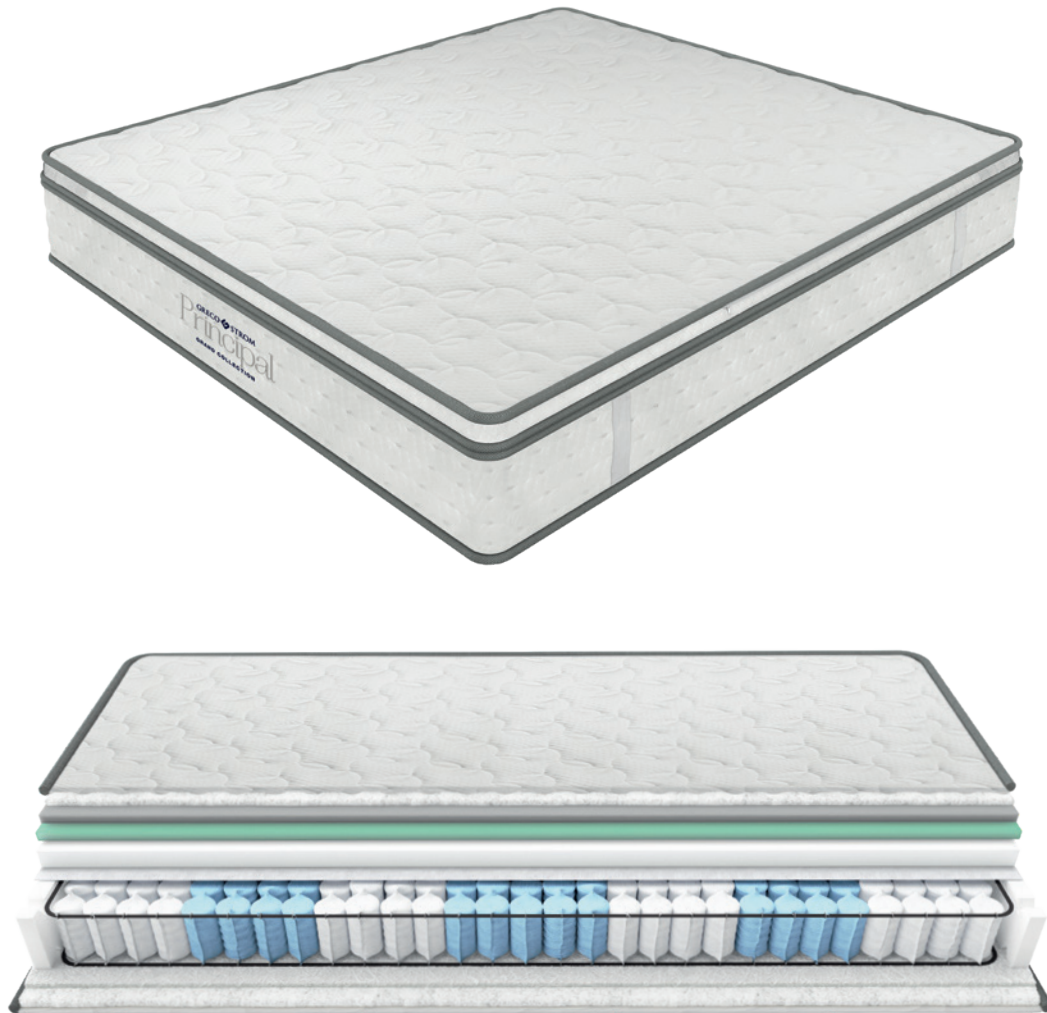


Swiss Approval International Certification.

This product has been tested for durability and complies with the requirements of the European standard: EN 1957:2012 & EN 1334:1999.

# Principal

**THE HIGH ELASTICITY OF THE MATERIALS  
COMBINED WITH THE ULTIMATE ADAPTABILITY OF  
THE HUMAN BODY ABSORB THE VIBRATIONS OF THE DAY.**



**HANDLES**

For easy rotation of the mattress.



**ZIPPER**

Allows the optical control of materials.



# Grand Collection

## TENCEL FABRIC FIRE RETARDAND

FOR PRODUCTION OF TENCEL FABRIC, we use yarn derived from wood pulp. The special characteristic of this yarn is the cool and silky touch, a texture which gives a natural 'glow'. The TENCEL fabric is breathable with very good moisture absorption characteristics and stands out for its thermoregulatory properties. In addition, it offers great comfort to movements while embracing harmoniously the body. The perfect combination of excellent durability, soft sensation and luxurious appearance.

## POLYESTER WAD

WHITE WAD WITH CERTIFIED HYPOALLERGENIC PROPERTIES from 100% polyester antibacterial fiber. It allows the internal ventilation of the mattress and removes moisture. It has excellent strength, elasticity and resilience.

## ACTIVE FOAM INN

SOFT AND DURABLE FOAM tested and suitable for quilted mattress treatment.

## QUILTED HILL

QUILT PROCESS FOR EXTREMELY SOFT SENSATION, great comfort and aesthetically perfect result achieved by state-of-the-art machines.

## GRAND RELIEF FOAM LAYER

FOAM LAYER which allows internal ventilation and works perfectly with the MEMORY FOAM SOFT LAYER. The result is the maximum performance behavior of the mattress.

## FLEX LAYER PLUS

HIGH-STRENGTH FOAM that promotes the maintenance of mattress uniformity and provides ideal anatomical support.

## FLEXCOAT

A SPECIFIC FLEXIBLE AND RESISTANT 3D MATERIAL, which works as an excellent raw material protection system, thus contributing to proper function and mattress comfort.

## 7 ZONE POCKET SPRINGS 500S

A UNIT OF INDIVIDUAL SPRINGS THAT ARE HOSTED SEPARATELY IN CLOTH POUCHES. With 7 different support zones they ensure individual elasticity and provide a high support degree. This regulates pressure distribution and ensures ergonomic fit with body weight. The rate of 260pcs per m<sup>2</sup> is maintained.

## FRAME SUPPORT

STAINLESS STEEL FRAMEWORK SUPPORT ensures spring stabilization and mattress dimension.

## UPPER BORDER SUPPORT SYSTEM

GRECO STROM through constant search and implementation of innovative technologies, has designed the new perimetric mattress support system, limiting recession in the process of the vertical pressure of its weight. It consists of increased density FOAM SUPPORT with special V-shaped notches along the sides and FOAM JUMP QUILTED SUPPORT process for the exterior mattress fabric.

## SC FIBER FILTER

FILTER FROM STERILIZED COTTON FIBERS offers ideal insulation and support.

## POLYESTER WAD

## TENCEL FABRIC FIRE RETARDAND

## 5 YEARS GUARANTEE



Swiss Approval International Certification.

This product has been tested for durability and complies with the requirements of the European standard: EN 1957:2012 & EN 1334:1999.

# The Classic Collection

COMBINING TRADITIONAL SKILLS WITH INNOVATION.



GRECO STROM, respects the unique desireds and the special requirements, which are now the foundation for a good life. Through the **Classic mattress collection**, the suitable conditions for a healthy, relaxed, comfortable and restful sleep are created.

The anatomical behavior, the orthopedic properties and the exceptional foam material are the guides, that create the **Classic mattress collection**, changing the sleep experience forever and satisfying the unique physical needs.

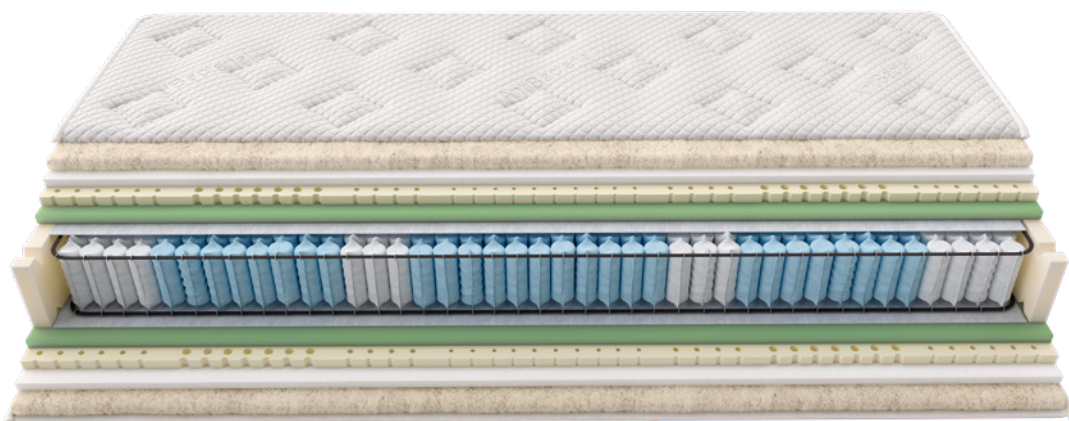


# Mattresses collection

The mattress is a health tool, it is reassurance of rest, it is investment of an efficient day. **GRECO STROM** acquires this and implements your desires.



# Inspirit



**AIR MESH 3D\***

Three dimensional boarder grip that allows comfortable air circulation and prevents the growth of microbes and micro-organisms inside the mattress.



**HANDLES**

For easy rotation of the mattress.



**ZIPPER**

Allows the optical control of materials.

Mattress height 26 cm (+/- 1 dimensional variation due to material nature).

# Classic Collection

## FABRIC STRETCH ANTIBACTERIAL RETARDANT PROTECT

EFFECTIVE AND LONG-TERM ANTIBACTERIAL PROTECT TREATMENT helps eliminate pests, since it is applied during the fabric production process of the fiber. This allows its protective effect to remain for as long as the mattress is used. The ANTIBACTERIAL PROTECT fabric is produced as compliance to the specifications of the European OEKO-TEX STANDARD 100.

## COTTON WAD

EFFECTIVE AND LONG-TERM HYPOALLERGENIC COTTON PAD, with antibacterial certification that offers great flexibility and allows interior ventilation of the mattress.

## INNER MICROFOAM PLUS

HIGH DENSITY FOAM FOR GREAT FLEXIBILITY, elasticity and uniformity, ensuring maximum performance of the mattress.

## QUILTED HILL JUMP SYSTEM

HIGH-TECH QUILT PROCESS for great soft sensation.

## LATEX 7 ZONES LAYER

FLEXIBLE NATURAL RUBBER MATERIAL. With 7 different support zones it gives the mattress excellent anatomical behavior, supporting ideally every part of the body. The numerous holes allow internal air ventilation by removing moisture while promoting its antiparasitic action.

## FLEX LAYER PREMIUM

FOAM MATERIAL of exceptional strength that promotes the uniformity of the mattress and helps to promote its anatomical behavior.

## FLEXCOAT

A HIGHLY FLEXIBLE AND DURABLE THREE-DIMENSIONAL MATERIAL, which works as an excellent protection system for raw materials.

## 7 ZONE MICRO POCKET SPRING UNIT 1000S

A UNIT OF INDIVIDUAL SPRINGS TYPE 7 ZONE MICRO POCKET that are hosted separately in cloth pouches with 7 different support zones. Therefore, it adjusts the pressure distribution for excellent anatomy. The rate of 500 pcs per m<sup>2</sup> is maintained.

## FRAME SUPPORT

ENSURES THE SPRING STABILIZATION and the mattress dimension.

## FOAM SUPPORT PLUS

FOAMED REINFORCED DENSITY MATERIAL for border support of the mattress. Special V-shaped notches on the longitudinal sides ensure optimum ventilation of the mattress.

## 7 YEARS GUARANTEE

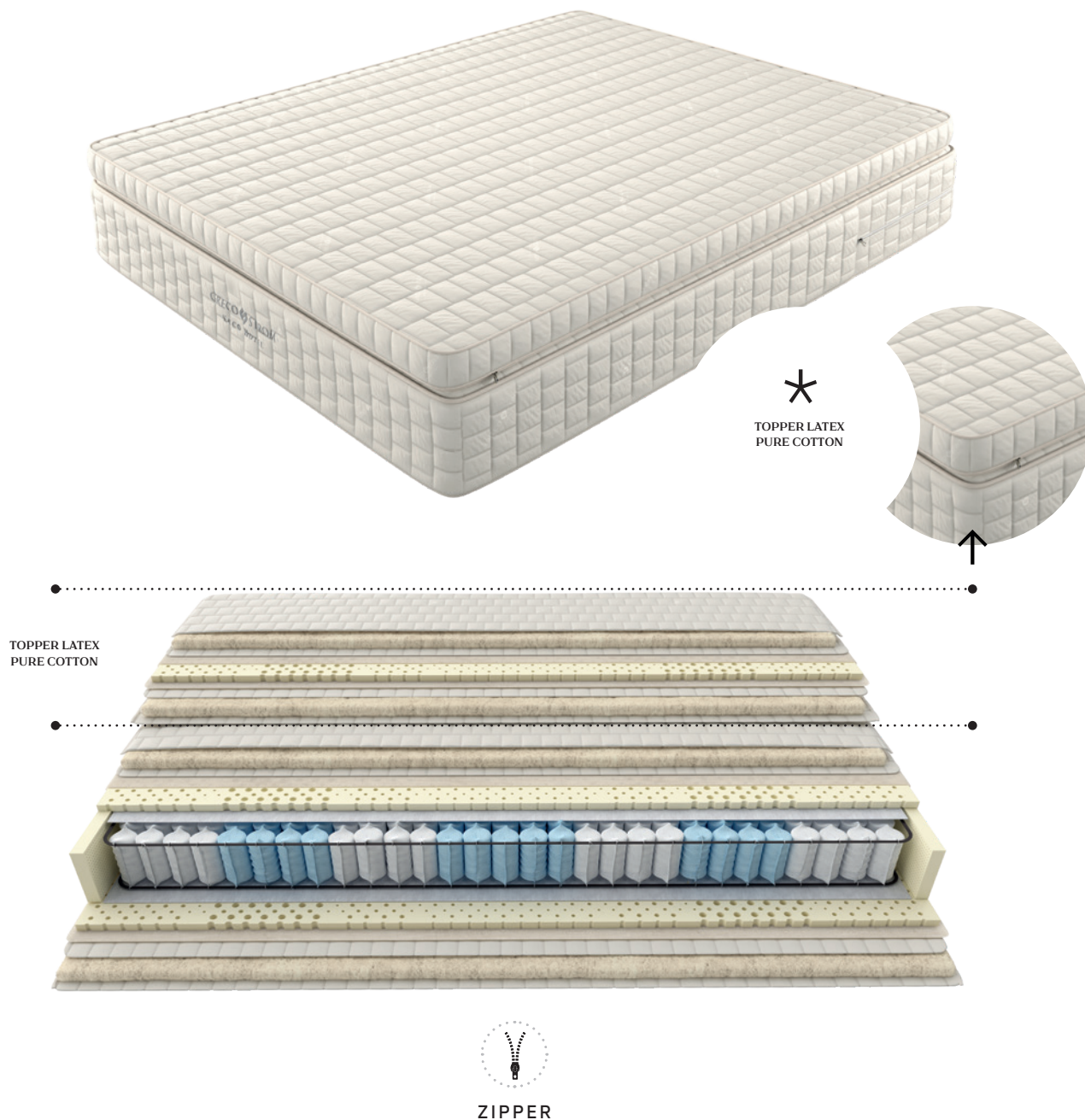


Swiss Approval International Certification.

This product has been tested for durability and complies with the requirements of the European standard: EN 1957:2012 & EN 1334:1999.

# Ecco

AVAILABLE WITH LATEX TOPPER PURE COTTON.



Allows the optical control of materials and cover removal.

Mattress height 22 cm (+/- 1 dimensional variation due to material nature).

# Classic Collection

## MATERIALS PLACED IN THE TOPPER

### ZIPPER TOPPER COVER REMOVABLE 100% PURE COTTON ANTI-FLAME

TOPPER WITH 100% FIBER FABRIC AND COTTON produced without the use of genetically modified seeds and chemicals. It is hypoallergenic, anti carcinogenic and has anti-peeling treatment for maximum strength and wool quilted treatment for maximum comfort. The cover provides a border cotton cord and zipper for easy and perfect application. Slow burning and washable at 50 °C. Certified by OEKO TEX STANDARD 100.

### WOOL WAD

HYPOALLERGENIC WOOL PAD, with antibacterial certification and thermo-regulating features that offers great flexibility and allows interior ventilation of the topper.

### QUILTED HILL

HIGH-TECH QUILT TREATMENT for extremely soft sensation.

### STABILIZER

SPECIAL ECOLOGICAL FABRIC that stabilizes the inner material.

### LATEX 7 ZONES LAYER

FLEXIBLE NATURAL RUBBER MATERIAL with 7 different support zones for excellent anatomical behavior.

## MATERIALS PLACED IN THE MATTRESS

### ZIPPER MATTRESS COVER REMOVABLE 100% PURE COTTON ANTIFLAME

THE FABRIC COVER PURE COTTON ANTIFLAME PRODUCED FROM 100% fiber fabric and cotton produced without the use of genetically modified seeds and chemicals. It is hypoallergenic, anti carcinogenic and has anti-peeling treatment for maximum strength and wool quilted treatment for maximum comfort. The cover provides a border cotton cord and zipper for easy and perfect application. Slow burning and washable at 50 °C. Certified by OEKO TEX STANDARD 100.

### WOOL WAD

HYPOALLERGENIC WOOL PAD, with antibacterial certification and thermo-regulating features that offers great flexibility and allows interior ventilation of the mattress.

### QUILTED HILL

HIGH-TECH QUILT PROCESS for great soft sensation.

### STABILIZER

SPECIAL ECOLOGICAL FABRIC that stabilizes the inner material.

### LATEX 7 ZONES LAYER

FLEXIBLE NATURAL RUBBER MATERIAL. With 7 different support zones it gives the mattress excellent anatomical behavior, supporting ideally every part of the body. The numerous holes allow internal air ventilation by removing moisture while promoting its antiparasitic action.

### FLEXCOAT

A HIGHLY FLEXIBLE AND DURABLE THREE-DIMENSIONAL MATERIAL, which works as an excellent protection system for raw materials.

### 7 ZONE POCKET SPRING UNIT 500S

A UNIT OF INDIVIDUAL SPRINGS TYPE POCKET SPRINGS that are hosted separately in cloth pouches with 7 different support zones. Therefore, it ensures the maximum anatomical behaviour of the mattress. The specific thickness of the wire and the barrel shape springs provide noise avoidance. The rate of 260 pcs per m<sup>2</sup> is maintained.

### FRAME SUPPORT

ENSURES THE SPRING STABILIZATION and the mattress dimension.

### LATEX SUPPORT

LATEX (NATURAL RUBBER) BORDER SUPPORT LAYER of special density. Its numerous holes ensure excellent ventilation of the mattress.

### FLEXCOAT

### LATEX 7 ZONES LAYER

### STABILIZER

### WOOL WAD

### MATTRESS COVER 100% PURE COTTON ANTIFLAME

### QUILTED HILL

### 5 YEARS GUARANTEE



Swiss Approval International Certification.

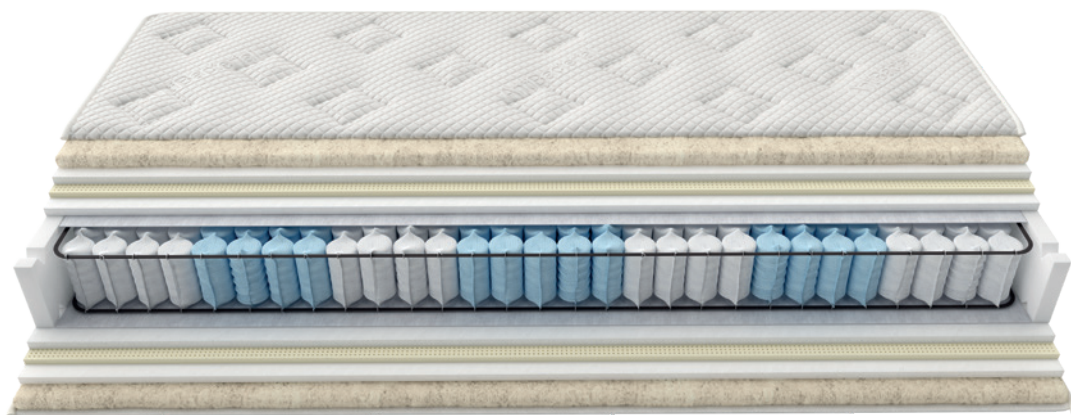
This product has been tested for durability and complies with the requirements of the European standard: EN 1957:2012 & EN 1334:1999.

The inner materials are described in the order they are placed on the topper and the mattress for each of its two sides.

The toppers are produced in all desired dimensions and in different heights. Mattress produced in all desired dimensions. (+/- 1 dimensional variation due to material nature).



# Suit



**AIR MESH 3D\***

Three dimensional boarder grip that allows comfortable air circulation and prevents the growth of microbes and micro-organisms inside the mattress.



**HANDLES**

For easy rotation of the mattress.



**ZIPPER**

Allows the optical control of materials.

Mattress height 26 cm (+/- 1 dimensional variation due to material nature).

# Classic Collection

## FABRIC STRETCH ANTIBACTERIAL RETARDANT PROTECT

EFFECTIVE AND LONG-TERM ANTIBACTERIAL PROTECT TREATMENT helps eliminate pests, since it is applied during the fabric production process of the fiber. This allows its protective effect to remain for as long as the mattress is used. The ANTIBACTERIAL PROTECT fabric is produced as compliance to the specifications of the European OEKO-TEX STANDARD 100.

## COTTON WAD

EFFECTIVE AND LONG-TERM HYPOALLERGENIC COTTON PAD, with antibacterial certification that offers great flexibility and allows interior ventilation of the mattress.

## INNER MICROFOAM PLUS

HIGH DENSITY FOAM FOR GREAT FLEXIBILITY, elasticity and uniformity, ensuring maximum performance of the mattress.

## QUILTED HILL JUMP SYSTEM

HIGH-TECH QUILT PROCESS for great soft sensation.

## LATEX FIRM LAYER

FLEXIBLE NATURAL RUBBER MATERIAL. Exemplary supports the spine and limbs. The numerous holes allow internal ventilation of the air by removing moisture.

## FLEX LAYER SUPERIOR

FOAM MATERIAL OF EXCEPTIONAL STRENGTH that promotes the uniformity of the mattress and helps to promote its anatomical behavior.

## FLEXCOAT

A HIGHLY FLEXIBLE AND DURABLE THREE-DIMENSIONAL MATERIAL, which works as an excellent protection system for raw materials.

## 7 ZONE POCKET SPRING UNIT 500S

A UNIT OF INDIVIDUAL SPRINGS TYPE POCKET SPRINGS that are hosted separately in cloth pouches with 7 different support zones. Therefore, it ensures the maximum anatomical behavior of the mattress. The specific thickness of the wire and the barrel shape springs provide noise avoidance. The rate of 260pcs per m<sup>2</sup> is maintained.

## FRAME SUPPORT

ENSURES THE SPRING STABILIZATION and the mattress dimension.

## FOAM SUPPORT PLUS

FOAMED REINFORCED DENSITY MATERIAL for border support of the mattress. Special V-shaped notches on the longitudinal sides ensure optimum ventilation of the mattress.

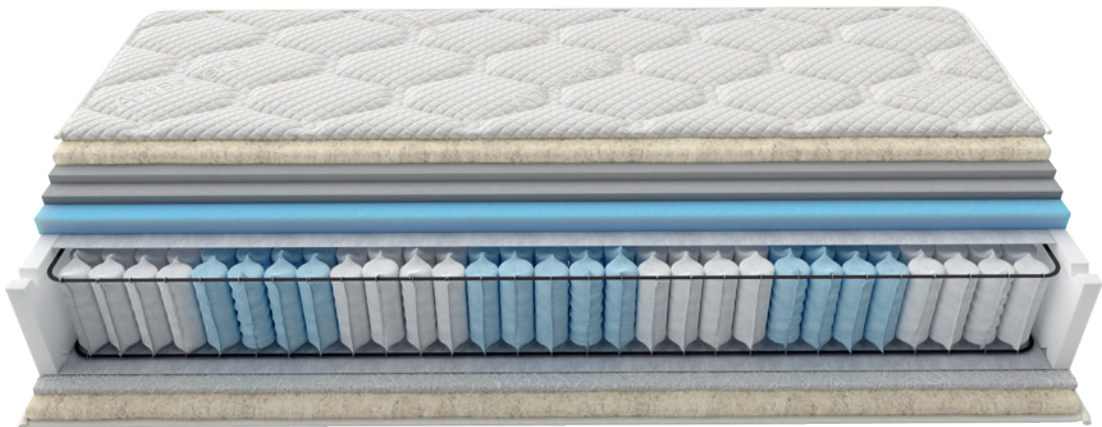
## 5 YEARS GUARANTEE



Swiss Approval International Certification.

This product has been tested for durability and complies with the requirements of the European standard: EN 1957:2012 & EN 1334:1999.

# Artful



**AIR MESH 3D\***

Three dimensional boarder grip that allows comfortable air circulation and prevents the growth of microbes and micro-organisms inside the mattress.



**HANDLES**

For easy rotation of the mattress.



**ZIPPER**

Allows the optical control of materials.

Mattress height 30 cm (+/- 1 dimensional variation due to material nature).



# Classic Collection

*MATERIALS PLACED ON THE TOP SIDE OF THE MATTRESS & ABOVE THE CENTRAL SPRING CORE*

## FABRIC STRETCH ANTIBACTERIAL RETARDANT PROTECT

EFFECTIVE AND LONG-TERM ANTIBACTERIAL PROTECT TREATMENT helps eliminate pests, since it is applied during the fabric production process of the fiber. This allows its protective effect to remain for as long as the mattress is used. The ANTIBACTERIAL PROTECT fabric is produced as compliance to the specifications of the European OEKO-TEX STANDARD 100.

## COTTON WAD

EFFECTIVE AND LONG-TERM HYPOALLERGENIC COTTON PAD, with antibacterial certification that offers great flexibility and allows interior ventilation of the mattress.

## DOUBLE LAYER INNER MICROFOAM PLUS

FOAMED WITH HIGH DENSITY AND STRENGTH for great elasticity, flexibility and maximum performance of the mattress.

## QUILTED HILL

HIGH-TECH QUILT PROCESS FOR GREAT SOFT SENSATION.

## FLEX LAYER PREMIUM

FOAM MATERIAL OF EXCEPTIONAL STRENGTH that promotes the uniformity of the mattress and helps to promote its anatomical behavior.

## FLEXCOAT

A HIGHLY FLEXIBLE AND DURABLE THREE-DIMENSIONAL MATERIAL, which works as an excellent protection system for raw materials

## CENTRAL CORE

### 7 ZONE POCKET SPRING UNIT 500S

A UNIT OF INDIVIDUAL SPRINGS TYPE POCKET SPRINGS THAT ARE HOSTED SEPARATELY IN CLOTH POUCHES with 7 different support zones. The 7 different support zones combined with the specific height of the spring allow individual flexibility and provide maximum support. The barrel shape of the springs ensures noise avoidance. The special thickness of the wire gives maximum resistance to this innovative spring unit as it is adjustable for pressure distribution and ergonomic adjustment to body weight is ensured. The rate of 260 pcs per m<sup>2</sup> is maintained.

### FRAME SUPPORT

ENSURES THE SPRING STABILIZATION and the mattress dimension.

### FOAM SUPPORT PLUS

FOAMED REINFORCED DENSITY MATERIAL for border support of the mattress. Special V-shaped notches on the longitudinal sides ensure optimum ventilation of the mattress.

*MATERIALS PLACED ON THE BOTTOM SIDE OF THE MATTRESS & UNDER THE CENTRAL SPRING CORE*

## FLEXCOAT

## THERMOBOND

INSULATING WHITE FILTER LAYER made of sterile cotton fibers for optimal insulation.

## COTTON WAD

## FABRIC STRETCH ANTIBACTERIAL RETARDANT PROTECT

## QUILTED HILL

HIGH-TECH QUILT PROCESS FOR GREAT SOFT SENSATION.

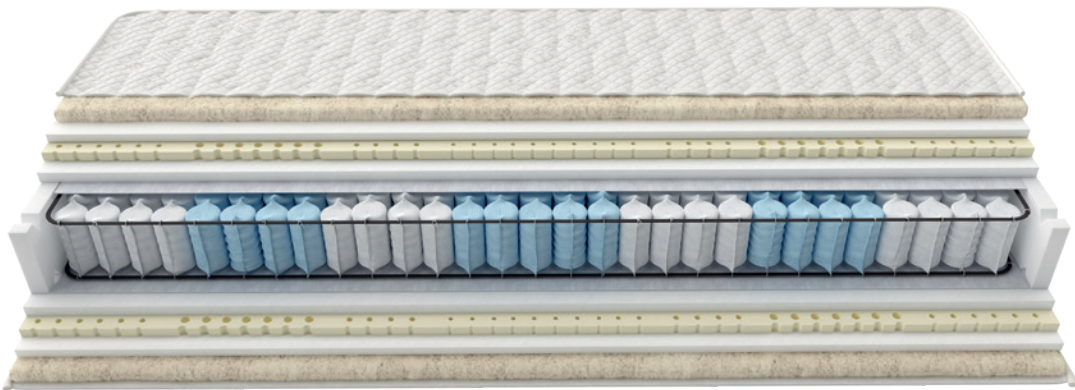
## 5 YEARS GUARANTEE



Swiss Approval International Certification.

This product has been tested for durability and complies with the requirements of the European standard: EN 1957:2012 & EN 1334:1999.

# Merit



**AIR MESH 3D\***

Three dimensional boarder grip that allows comfortable air circulation and prevents the growth of microbes and micro-organisms inside the mattress.



**HANDLES**

For easy rotation of the mattress.



**ZIPPER**

Allows the optical control of materials.

Mattress height 25 cm (+/- 1 dimensional variation due to material nature).

# Classic Collection

## FABRIC STRETCH ANTIBACTERIAL RETARDANT PROTECT

EFFECTIVE AND LONG-TERM ANTIBACTERIAL PROTECT TREATMENT helps eliminate pests, since it is applied during the fabric production process of the fiber. This allows its protective effect to remain for as long as the mattress is used. The ANTIBACTERIAL PROTECT fabric is produced as compliance to the specifications of the European OEKO-TEX STANDARD 100.

## COTTON WAD

EFFECTIVE AND LONG-TERM HYPOALLERGENIC COTTON PAD, with antibacterial certification that offers great flexibility and allows interior ventilation of the mattress.

## INNER MICROFOAM

HIGH DENSITY FOAM for great flexibility, elasticity and uniformity, ensuring maximum performance of the mattress..

## QUILTED HILL

HIGH-TECH QUILT PROCESS for great soft sensation.

## LATEX 7 ZONES LAYER

FLEXIBLE NATURAL RUBBER MATERIAL. With 7 different support zones it gives the mattress excellent anatomical behavior, supporting ideally every part of the body. The numerous holes allow internal air ventilation by removing moisture while promoting its antiparasitic action.

## FLEX LAYER SUPERIOR

FOAM MATERIAL OF EXCEPTIONAL STRENGTH that promotes the uniformity of the mattress and helps to promote its anatomical behavior.

## FLEXCOAT

A HIGHLY FLEXIBLE AND DURABLE THREE-DIMENSIONAL MATERIAL, which works as an excellent protection system for raw materials.

## 7 ZONE POCKET SPRING UNIT 500S

A UNIT OF INDIVIDUAL SPRINGS TYPE POCKET SPRINGS that are hosted separately in cloth pouches with 7 different support zones. Therefore, it ensures the maximum anatomical behavior of the mattress. The specific thickness of the wire and the barrel shape springs provide noise avoidance. The rate of 260pcs per m<sup>2</sup> is maintained.

## FRAME SUPPORT

ENSURES THE SPRING STABILIZATION and the mattress dimension.

## FOAM SUPPORT

FOAMED REINFORCED DENSITY MATERIAL for border support of the mattress. Special V-shaped notches on the longitudinal sides ensure optimum ventilation of the mattress.

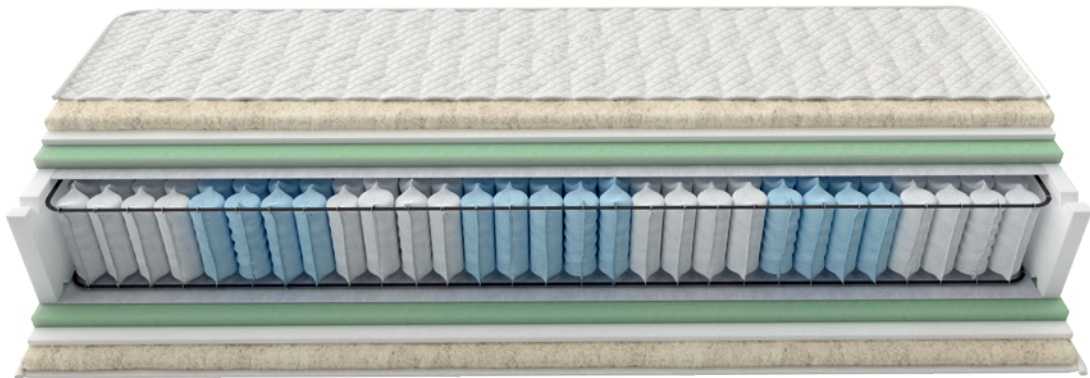
## 5 YEARS GUARANTEE



Swiss Approval International Certification.

This product has been tested for durability and complies with the requirements of the European standard: EN 1957:2012 & EN 1334:1999.

# Ablaze



**AIR MESH 3D\***

Three dimensional boarder grip that allows comfortable air circulation and prevents the growth of microbes and micro-organisms inside the mattress.



**HANDLES**

For easy rotation of the mattress.



**ZIPPER**

Allows the optical control of materials.

Mattress height 28 cm (+/- 1 dimensional variation due to material nature).

# Classic Collection

## FABRIC STRETCH ANTIBACTERIAL RETARDANT PROTECT

EFFECTIVE AND LONG-TERM ANTIBACTERIAL PROTECT TREATMENT helps eliminate pests, since it is applied during the fabric production process of the fiber. This allows its protective effect to remain for as long as the mattress is used. The ANTIBACTERIAL PROTECT fabric is produced as compliance to the specifications of the European OEKO-TEX STANDARD 100.

## COTTON WAD

EFFECTIVE AND LONG-TERM HYPOALLERGENIC COTTON PAD, with antibacterial certification that offers great flexibility and allows interior ventilation of the mattress.

## INNER MICROFOAM

HIGH DENSITY FOAM for great flexibility, elasticity and uniformity, ensuring maximum performance of the mattress..

## QUILTED HILL

HIGH-TECH QUILT PROCESS for great soft sensation.

## FLEX LAYER PREMIUM

FOAM MATERIAL of exceptional strength that promotes the uniformity of the mattress and helps to promote its anatomical behavior.

## FLEXCOAT

A HIGHLY FLEXIBLE AND DURABLE THREE-DIMENSIONAL MATERIAL, which works as an excellent protection system for raw materials.

## 7 ZONE POCKET SPRING UNIT 500S

A UNIT OF INDIVIDUAL SPRINGS TYPE POCKET SPRINGS that are hosted separately in cloth pouches with 7 different support zones. Therefore, it ensures the maximum anatomical behavior of the mattress. The specific thickness of the wire and the barrel shape springs provide noise avoidance. The rate of 260pcs per m<sup>2</sup> is maintained.

## FRAME SUPPORT

ENSURES THE SPRING STABILIZATION and the mattress dimension.

## FOAM SUPPORT PLUS

FOAMED REINFORCED DENSITY MATERIAL for border support of the mattress. Special V-shaped notches on the longitudinal sides ensure optimum ventilation of the mattress.

## 5 YEARS GUARANTEE

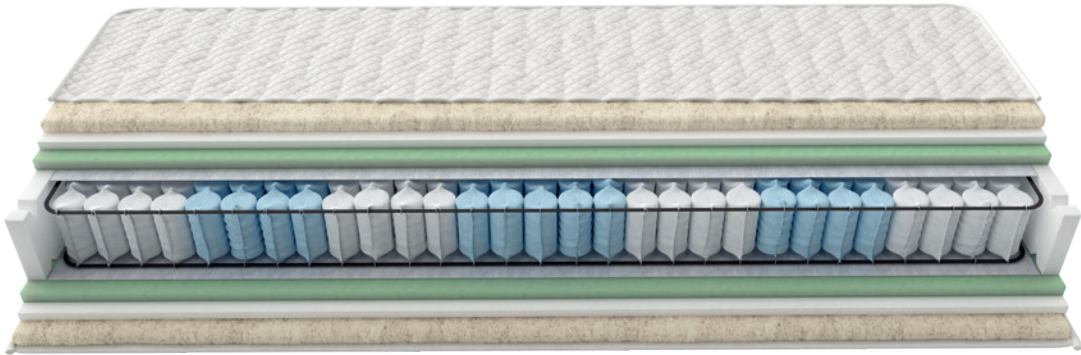


Swiss Approval International Certification.

This product has been tested for durability and complies with the requirements of the European standard: EN 1957:2012 & EN 1334:1999.



# Balm



## AIR MESH 3D\*

Three dimensional boarder grip that allows comfortable air circulation and prevents the growth of microbes and micro-organisms inside the mattress.



## HANDLES

For easy rotation of the mattress.



## ZIPPER

Allows the optical control of materials.

Mattress height 23 cm (+/- 1 dimensional variation due to material nature).

# Classic Collection

## FABRIC STRETCH ANTIBACTERIAL RETARDANT PROTECT

EFFECTIVE AND LONG-TERM ANTIBACTERIAL PROTECT TREATMENT helps eliminate pests, since it is applied during the fabric production process of the fiber. This allows its protective effect to remain for as long as the mattress is used. The ANTIBACTERIAL PROTECT fabric is produced as compliance to the specifications of the European OEKO-TEX STANDARD 100.

## COTTON WAD

EFFECTIVE AND LONG-TERM HYPOALLERGENIC COTTON PAD, with antibacterial certification that offers great flexibility and allows interior ventilation of the mattress.

## INNER MICROFOAM

HIGH DENSITY FOAM for great flexibility, elasticity and uniformity, ensuring maximum performance of the mattress..

## QUILTED HILL

HIGH-TECH QUILT PROCESS for great soft sensation.

## FLEX LAYER PREMIUM

FOAM MATERIAL of exceptional strength that promotes the uniformity of the mattress and helps to promote its anatomical behavior.

## FLEXCOAT

A HIGHLY FLEXIBLE AND DURABLE THREE-DIMENSIONAL MATERIAL, which works as an excellent protection system for raw materials.

## 7 ZONE POCKET SPRING UNIT 500S

A UNIT OF INDIVIDUAL SPRINGS TYPE 7 ZONE SUPERFLEX POCKET SPRINGS THAT ARE HOSTED SEPARATELY IN CLOTH POUCHES with 7 different support zones. Therefore, it ensures the maximum anatomical behavior of the mattress. The barrel shape springs provide noise avoidance. The special thickness of the wire gives maximum resistance to this innovative spring unit as it is adjustable to pressure distribution and ergonomic adaption to body weight is ensured. The rate of 260pcs per m<sup>2</sup> is maintained.

## FRAME SUPPORT

ENSURES THE SPRING STABILIZATION and the mattress dimension.

## FOAM SUPPORT

FOAMED REINFORCED DENSITY MATERIAL for border support of the mattress. Special V-shaped notches on the longitudinal sides ensure optimum ventilation of the mattress.

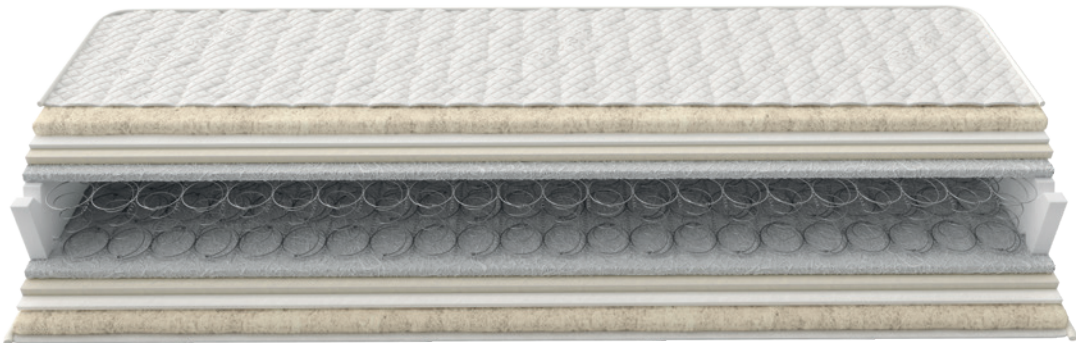
## 5 YEARS GUARANTEE



Swiss Approval International Certification.

This product has been tested for durability and complies with the requirements of the European standard: EN 1957:2012 & EN 1334:1999.

# Perla Hotel



**AIR MESH 3D\***

Three dimensional boarder grip that allows comfortable air circulation and prevents the growth of microbes and micro-organisms inside the mattress.



**HANDLES**

For easy rotation of the mattress.



**ZIPPER**

Allows the optical control of materials.

Mattress height 24 cm (+/- 1 dimensional variation due to material nature).



# Classic Collection

## FABRIC STRETCH ANTIBACTERIAL RETARDANT PROTECT

EFFECTIVE AND LONG-TERM ANTIBACTERIAL PROTECT TREATMENT helps eliminate pests, since it is applied during the fabric production process of the fiber. This allows its protective effect to remain for as long as the mattress is used. The ANTIBACTERIAL PROTECT fabric is produced as compliance to the specifications of the European OEKO-TEX STANDARD 100.

## COTTON WAD

EFFECTIVE AND LONG-TERM HYPOALLERGENIC COTTON PAD, with antibacterial certification that offers great flexibility and allows interior ventilation of the mattress.

## INNER MICROFOAM

HIGH DENSITY FOAM for great flexibility, elasticity and uniformity, ensuring maximum performance of the mattress..

## QUILTED HILL

HIGH-TECH QUILT PROCESS for great soft sensation.

## FLEX LAYER BASIC

FOAM MATERIAL of exceptional strength that promotes the uniformity of the mattress and helps to promote its anatomical behavior.

## THERMOBOND

INSULATING WHITE FILTER LAYER made of sterile cotton fibers for optimal insulation over springs type BONNELL.

## BONNELL SPRING 200B

SPRING UNIT TYPE BONNELL from specially formulated European antioxidant steel. The rate of 116 pcs per m<sup>2</sup> is maintained..

## FOAM SUPPORT

FOAMED REINFORCED DENSITY MATERIAL for border support of the mattress. Special V-shaped notches on the longitudinal sides ensure optimum ventilation of the mattress.

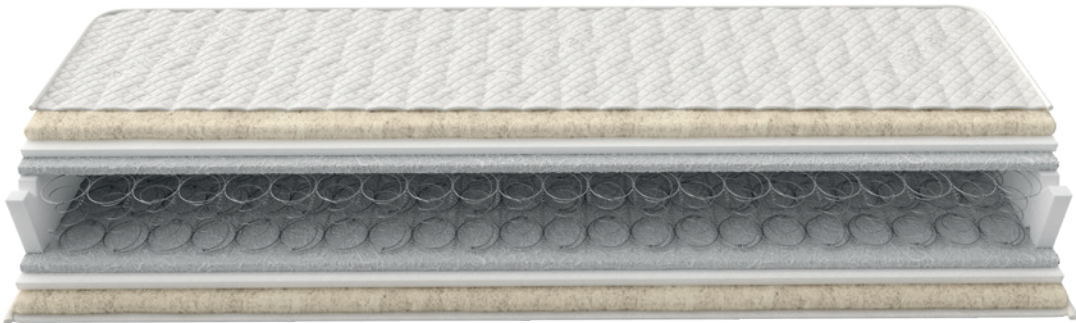
## 5 YEARS GUARANTEE



Swiss Approval International Certification.

This product has been tested for durability and complies with the requirements of the European standard: EN 1957:2012 & EN 1334:1999.

# Care



## AIR MESH 3D\*

Three dimensional boarder grip that allows comfortable air circulation and prevents the growth of microbes and micro-organisms inside the mattress.



## HANDLES

For easy rotation of the mattress.



## ZIPPER

Allows the optical control of materials.

Mattress height 20 cm (+/- 1 dimensional variation due to material nature).

# Classic Collection

## FABRIC STRETCH ANTIBACTERIAL RETARDANT PROTECT

EFFECTIVE AND LONG-TERM ANTIBACTERIAL PROTECT TREATMENT helps eliminate pests, since it is applied during the fabric production process of the fiber. This allows its protective effect to remain for as long as the mattress is used. The ANTIBACTERIAL PROTECT fabric is produced as compliance to the specifications of the European OEKO-TEX STANDARD 100.

## COTTON WAD

EFFECTIVE AND LONG-TERM HYPOALLERGENIC COTTON PAD, with antibacterial certification that offers great flexibility and allows interior ventilation of the mattress.

## QUILTED HILL

HIGH-TECH QUILT PROCESS for great soft sensation.

## FLEX LAYER BASIC

FOAM MATERIAL OF EXCEPTIONAL STRENGTH that promotes the uniformity of the mattress and helps to promote its anatomical behavior.

## THERMOBOND

INSULATING WHITE FILTER LAYER made of sterile cotton fibers for optimal insulation over springs type BONNELL.

## BONNELL SPRING 200B

SPRING UNIT TYPE BONNELL from specially formulated European antioxidant steel. The rate of 116 pcs per m<sup>2</sup> is maintained..

## FOAM SUPPORT

FOAMED REINFORCED DENSITY MATERIAL for border support of the mattress. Special V-shaped notches on the longitudinal sides ensure optimum ventilation of the mattress.

## QUILTED HILL

HIGH-TECH QUILT PROCESS for great soft sensation.

## 3 YEARS GUARANTEE



Swiss Approval International Certification.

This product has been tested for durability and complies with the requirements of the European standard: EN 1957:2012 & EN 1334:1999.

# Latex



## ZIPPER

External detachable cover with zipper (washable at 30 °C).

Mattress height 18 cm (+/- 1 dimensional variation due to material nature).

# Classic Collection

## FABRIC STRETCH ANTIBACTERIAL RETARDANT PROTECT

EFFECTIVE AND LONG-TERM ANTIBACTERIAL PROTECT TREATMENT helps eliminate pests, since it is applied during the fabric production process of the fiber. This allows its protective effect to remain for as long as the mattress is used. The ANTIBACTERIAL PROTECT fabric is produced as compliance to the specifications of the European OEKO-TEX STANDARD 100.

## COTTON WAD

EFFECTIVE AND LONG-TERM HYPOALLERGENIC COTTON PAD, with antibacterial certification that offers great flexibility and allows interior ventilation of the mattress.

## POLYMICRO FABRIC

PRODUCED ACCORDING TO THE SPECIFICATIONS of the European OEKO-TEX STANDARD 100.

## STABILIZER

SPECIAL ECOLOGICAL FABRIC that stabilizes the inner material.

## 7 MULTI-ZONE LATEX

LATEX IS A WHITE, MILKY LIQUID THAT COMES FROM THE EXTRACTS OF THE HEVEA BRASILIENSIS TROPICAL TREE and is characterized by its unique flexibility and excellent restoration. Thanks to its seven different support zones it ensures an evenly distribution of body pressure during sleep. In this way, it promotes proper blood circulation in the spine and the limbs. Its numerous holes allow for optimum ventilation of the mattress, preventing the growth of microbes, fungi and mites, thus ensuring the best hygiene conditions. GRECO STROM guarantees the use of the best latex quality selected from controlled plantations and is strictly tested before and during the production process.

## 7 YEARS GUARANTEE



Swiss Approval International Certification.

This product has been tested for durability and complies with the requirements of the European standard: EN 1957:2012 & EN 1334:1999.

# Unify system

THE STRENGTH IN UNITY!



GRECO STROM provides you with a unique range of flexible sleep solutions that can help you contribute to maximization of 'Revenue and Gross Profitability per available room'. It is a specially designed union system of two single mattresses that creates a double mattress set. In conjunction with the special bed base joints, it provides the flexibility to separate a large bed in twin beds when needed.



This allows a double bedroom to be easily converted into one twin bedroom – perfect for business travelers, elderly couples who need their own space, or even older children who do not want to share a bed. Another advantage is that you can turn, rotate and move the mattresses easier and also makes it easier to transport them through narrow stairs, low ceilings etc.



**EXCLUSIVELY FROM GRECO STROM**

By putting zippers on the mattresses and special joints on the beds  
you can give more flexibility and maximize room capacity.



# Toppers

TOUCHING PERFECTION!



Perfection of the ideal sleeping conditions is what motivates us every step of the way. Therefore, to offer people that trust us with the utmost sleep experience, we proceeded to the design and production of special mattress toppers.

The toppers are placed above the mattress to reinforce their appearance and its special features to the fullest extent, making sleep a dreamy sensation of comfort and luxury.

Discover GRECO STROM toppers...

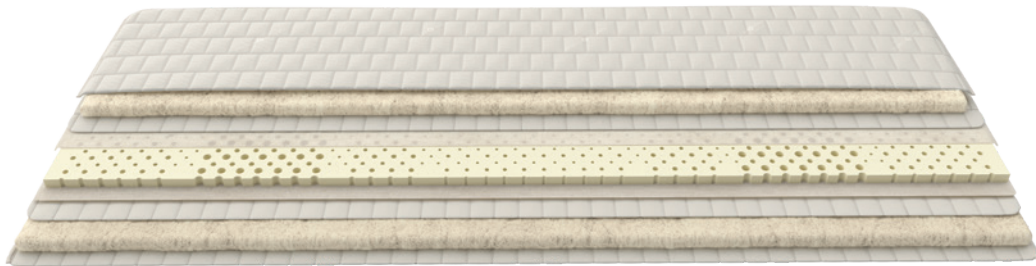
# Top up the quality



# Toppers

## → LATEX 7 ZONES PURE COTTON

EXTERNAL DETACHABLE COVER WITH ZIPPER  
(WASHABLE AT 30°C)



### ZIPPER TOPPER COVER REMOVABLE 100% PURE COTTON ANTI-FLAME

TOPPER WITH 100% FIBER FABRIC AND COTTON produced without the use of genetically modified seeds and chemicals. It is hypoallergenic, anti carcinogenic and has anti-peeling treatment for maximum strength and wool quilted treatment for maximum comfort. The cover provides a border cotton cord and zipper for easy and perfect application. Slow burning and washable at 30 °C. Certified by OEKO TEX STANDARD 100.

### WOOL WAD

HYPOALLERGENIC WOOL PAD, with antibacterial certification and thermo-regulating features that offers great flexibility and allows interior ventilation of the topper.

### QUILTED HILL

HIGH-TECH QUILT TREATMENT for extremely soft sensation.

### STABILIZER

SPECIAL ECOLOGICAL FABRIC that stabilizes the inner material.

### LATEX 7 ZONES LAYER

FLEXIBLE NATURAL RUBBER MATERIAL with 7 different support zones for excellent anatomical behavior.

The inner materials are described in the order they are placed on the topper for each of its two sides.

The toppers are produced in all desired dimensions and in different heights (deviation +/- 1 due to the use of natural materials).

# Upper mattresses

→ **LATEX 7 ZONES ANTIBACTERIAL**

EXTERNAL DETACHABLE COVER WITH ZIPPER  
(WASHABLE AT 30°C)



IT CAN BE PRODUCED  
WITH ONE RAIL  
& NO DETACHABLE  
OUTER COVER

## FABRIC STRETCH ANTIBACTERIAL RETARDANT PROTECT

EFFECTIVE AND LONG-TERM ANTIBACTERIAL PROTECT TREATMENT helps eliminate pests, since it is applied during the fabric production process of the fiber. This allows its protective effect to remain for as long as the topper is used. The ANTIBACTERIAL PROTECT fabric is manufactured with the specifications of the European OEKO-TEX STANDARD 100.

## POLYESTER WAD

WHITE WAD WITH CERTIFIED HYPOALLERGENIC PROPERTIES OF 100% POLYESTER FIBER, antibacterial, allows the internal ventilation of the mattress and removes moisture. It has excellent durability, elasticity and restoration.

## QUILTED HILL

HIGH-TECH QUILT TREATMENT for extremely soft sensation.

## STABILIZER

SPECIAL ECOLOGICAL FABRIC that stabilizes the inner material.

## LATEX 7 ZONES LAYER

FLEXIBLE NATURAL RUBBER MATERIAL with 7 different support zones for excellent anatomical behavior.

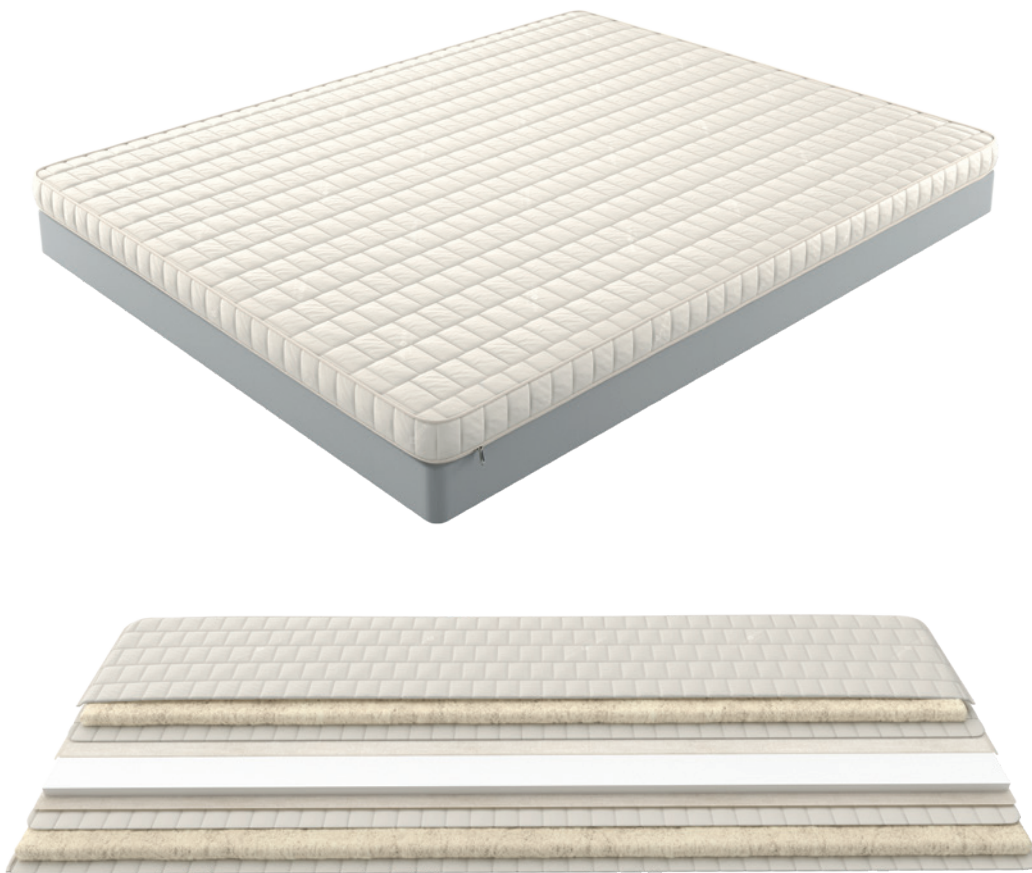
The inner materials are described in the order they are placed on the topper for each of its two sides.

The toppers are produced in all desired dimensions and in different heights (deviation +/- 1 due to the use of natural materials).

# Toppers

## → MEMORY PURE COTTON

EXTERNAL DETACHABLE COVER WITH ZIPPER  
(WASHABLE AT 30°C)



### ZIPPER TOPPER COVER REMOVABLE 100% PURE COTTON ANTI-FLAME

TOPPER WITH 100% FIBER FABRIC AND COTTON produced without the use of genetically modified seeds and chemicals. It is hypoallergenic, anti carcinogenic and has anti-peeling treatment for maximum strength and wool quilted treatment for maximum comfort. The cover provides a border cotton cord and zipper for easy and perfect application. Slow burning and washable at 30 °C. Certified by OEKO TEX STANDARD 100.

### WOOL WAD

HYPOALLERGENIC WOOL PAD, with antibacterial certification and thermo-regulating features that offers great flexibility and allows interior ventilation of the topper.

### QUILTED HILL

HIGH-TECH QUILT TREATMENT for extremely soft sensation.

### STABILIZER

SPECIAL ECOLOGICAL FABRIC that stabilizes the inner material.

### VIS COPUR

MEMORY FOAM WITH VERY SLOW RETURN TO ITS ORIGINAL STATE, every time it is under pressure. It works according to body temperature, while contributing to its maximum anatomy performance. This product was originally used by NASA in laboratory studies.

The inner materials are described in the order they are placed on the topper for each of its two sides.

The toppers are produced in all desired dimensions and in different heights (deviation +/- 1 due to the use of natural materials).

# Upper mattresses

## → MEMORY ANTIBACTERIAL

EXTERNAL DETACHABLE COVER WITH ZIPPER  
(WASHABLE AT 30°C)



IT CAN BE PRODUCED  
WITH ONE RAIL  
& NO DETACHABLE  
OUTER COVER

### FABRIC STRETCH ANTIBACTERIAL RETARDANT PROTECT

EFFECTIVE AND LONG-TERM ANTIBACTERIAL PROTECT TREATMENT helps eliminate pests, since it is applied during the fabric production process of the fiber. This allows its protective effect to remain for as long as the topper is used. The ANTIBACTERIAL PROTECT fabric is manufactured with the specifications of the European OEKO-TEX STANDARD 100.

### POLYESTER WAD

WHITE WAD WITH CERTIFIED HYPOALLERGENIC PROPERTIES OF 100% POLYESTER FIBER, antibacterial, allows the internal ventilation of the mattress and removes moisture. It has excellent durability, elasticity and restoration.

### QUILTED HILL

HIGH-TECH QUILT TREATMENT for extremely soft sensation.

### STABILIZER

SPECIAL ECOLOGICAL FABRIC that stabilizes the inner material.

### VISCOPUR

MEMORY FOAM WITH VERY SLOW RETURN TO ITS ORIGINAL STATE, every time it is under pressure. It works according to body temperature, while contributing to its maximum anatomy performance. This product was originally used by NASA in laboratory studies.

The inner materials are described in the order they are placed on the topper for each of its two sides.

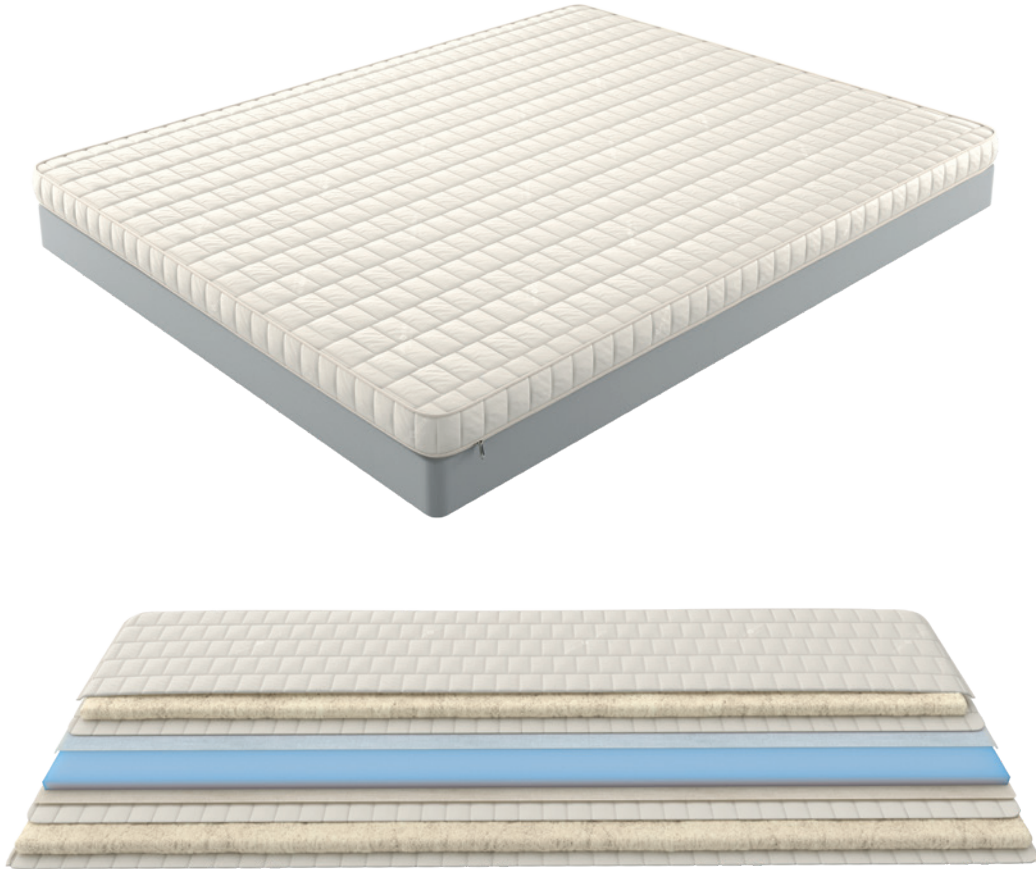
The toppers are produced in all desired dimensions and in different heights (deviation +/- 1 due to the use of natural materials).



# Toppers

→ **FOAM PURE COTTON**

EXTERNAL DETACHABLE COVER WITH ZIPPER  
(WASHABLE AT 30°C)



## ZIPPER TOPPER COVER REMOVABLE 100% PURE COTTON ANTI-FLAME

TOPPER WITH 100% FIBER FABRIC AND COTTON produced without the use of genetically modified seeds and chemicals. It is hypoallergenic, anti carcinogenic and has anti-peeling treatment for maximum strength and wool quilted treatment for maximum comfort. The cover provides a border cotton cord and zipper for easy and perfect application. Slow burning and washable at 30 °C. Certified by OEKO TEX STANDARD 100.

## WOOL WAD

HYPOALLERGENIC WOOL PAD, with antibacterial certification and thermo-regulating features that offers great flexibility and allows interior ventilation of the topper.

## QUILTED HILL

HIGH-TECH QUILT TREATMENT for extremely soft sensation.

## STABILIZER

SPECIAL ECOLOGICAL FABRIC that stabilizes the inner material.

## FOAM SUPERIOR

HIGH DENSITY FOAM with exceptional durability for maximum flexibility and elasticity . Thanks to its meticulous form, it allows air to circulate and provides excellent restoration.

The inner materials are described in the order they are placed on the topper for each of its two sides.

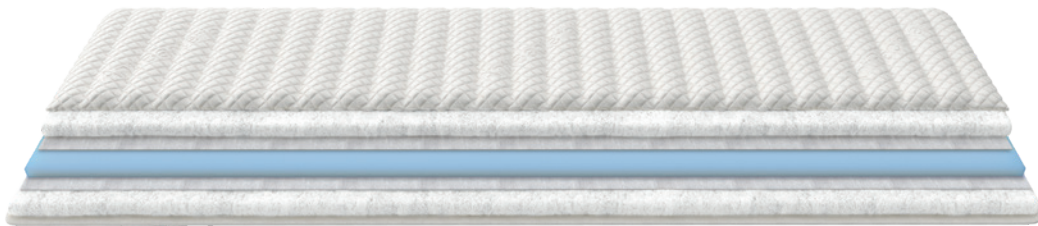
The toppers are produced in all desired dimensions and in different heights (deviation +/- 1 due to the use of natural materials).



# Upper mattresses

→ **FOAM ANTIBACTERIAL**

EXTERNAL DETACHABLE COVER WITH ZIPPER  
(WASHABLE AT 30°C)



## FABRIC STRETCH ANTIBACTERIAL RETARDANT PROTECT

EFFECTIVE AND LONG-TERM ANTIBACTERIAL PROTECT TREATMENT helps eliminate pests, since it is applied during the fabric production process of the fiber. This allows its protective effect to remain for as long as the topper is used. The ANTIBACTERIAL PROTECT fabric is manufactured with the specifications of the European OEKO-TEX STANDARD 100.

## POLYESTER WAD

WHITE WAD WITH CERTIFIED HYPOALLERGENIC PROPERTIES OF 100% POLYESTER FIBER, antibacterial, allows the internal ventilation of the mattress and removes moisture. It has excellent durability, elasticity and restoration.

## QUILTED HILL

HIGH-TECH QUILT TREATMENT for extremely soft sensation.

## STABILIZER

SPECIAL ECOLOGICAL FABRIC that stabilizes the inner material.

## FOAM SUPERIOR

HIGH DENSITY FOAM with exceptional durability for maximum flexibility and elasticity. Thanks to its meticulous form, it allows air to circulate and provides excellent restoration.

The inner materials are described in the order they are placed on the topper for each of its two sides.

The toppers are produced in all desired dimensions and in different heights (deviation +/- 1 due to the use of natural materials).

# Protective covers

FOR A LONGER AND HEALTHIER LAST



Even if we have the ideal mattress for us, it is essential to protect it with special covers, so that it can provide us with all its beneficial properties during sleep, for a long time.

Our special **GRECO STROM** mattress covers, protect the mattress hygienic condition while extending its life span. And this is because during sleep our body eliminates skin flakes, sweat and various bodily secretions thus favoring the creation for the growth of microorganisms.

The best way to ensure a healthy, clean and safe sleep is to choose one of the protective mattress covers of **GRECO STROM**.



# Protective mattress covers

## → COTTON

WATERPROOF COTTON PROTECTIVE COVER that maintains the proper hygienic conditions of the mattress. The cover provides a border grip for easy and perfect adjustment.

THE FABRIC OF THE COVER IS MANUFACTURED WITH THE SPECIFICATIONS OF THE EUROPEAN OEKO-TEX STANDARD 100.

## WATERPROOF COTTON



## → SAFETY ANTIBACTERIAL

ITS FULLY WATERPROOF MEMBRANE ensures absolute protection from stains and physical secretions. The cover provides a border grip for easy and perfect adjustment.

THE FABRIC OF THE COVER IS MANUFACTURED WITH THE SPECIFICATIONS OF THE EUROPEAN OEKO-TEX STANDARD 100.

## ABSOLUTE PROTECTION



# Protective pillowcases

## → COTTON

THE COTTON PILLOW COVER has a waterproof membrane to ensure perfect protection and proper hygiene conditions of the pillow.

THE FABRIC OF THE COVER IS MANUFACTURED WITH THE SPECIFICATIONS OF THE EUROPEAN OEKO-TEX STANDARD 100.

ANTIBACTERIAL



## → SAFETY ANTIBACTERIAL

SAFETY ANTIBACTERIAL PROTECTIVE COVER PILLOWCASE offers long-term protection from fungi, bacteria and mites.

THE FABRIC OF THE COVER IS MANUFACTURED WITH THE SPECIFICATIONS OF THE EUROPEAN OEKO-TEX STANDARD 100.

ABSOLUTE PROTECTION



**FOR A LONGER & HEALTHIER LAST**

For complete protection, secure hygiene, and cleanliness of your pillows for a longer time, choose **GRECO STROM** protective pillowcases.

## ALL YOU NEED TO KNOW



Medical studies confirm that one of the most important factors for ideal sleep is the correct body position. More specifically, the spine and especially the cervical spine must be aligned.

Choosing the right pillow helps alignment as it covers the gap between head and mattress.

Therefore, a proper pillow is absolutely necessary to achieve a comfortable and relaxed sleep.

If sleeping on the back side, a soft or moderate pillow is needed so that the spine does not recline.

# An important choice

Similarly, if sleeping front side, a soft and low pillow is needed so that the head can turn while sleeping without exerting much pressure on the neck.

On the other hand, while sleeping sideways, a taller and harder cushion is needed, that will support better the head and keep the spine aligned.

For someone who does not have a sleeping position, it is advisable to use two soft or moderate pillows when sleeping sideways and one when sleeping on the back or on the front side.

Understanding and having in mind the principle role, a pillow plays for ideal sleep, **GRECO STROM** has developed a complete range of sleeping pillows that perfectly meets every need.

Ask us to create your hotel Pillow Menu.





# Feather

GRECO STROM FEATHER PILLOWS transform sleep into an enjoyable journey to a world of senses. They provide excellent elasticity and an amazing feeling of silky softness. Their thermo regulating properties and their international hygienic standards, bring them to higher positions of preferences.

100% natural products, biodegradable, recyclable and environmentally friendly; and in addition, they have been certified for their antimicrobial, antibacterial and hypoallergenic properties.

## → SENCE

Inner filling 100% feather from young goose neck.  
Outer cover fabric 100% organic cotton.

DIMENSIONS 50 X 70 CM

100% NATURAL FEATHER



## → NUVOLA

Inner filling 50% feather from young goose neck and 50% from small duck feathers. Outer cover fabric 100% organic cotton.

DIMENSIONS 50 X 70 CM

100% NATURAL FEATHER



# Latex Natural

GRECO STROM'S 100% NATURAL LATEX PILLOWS form an excellent product line of quality and durability with all the privileged features provided by natural rubber. Their numerous holes allow the ideal ventilation, preventing the growth of germs

and mites. A superior natural material, free of toxic and allergenic substances, which maintains its shape and comfort within time.

## → NATURAL LATEX 40 X 60 X 10/12

100% natural latex with anatomical shape. 2 position choice 10 & 12 cm. Inner filling 100% natural latex. Outer cover 100% organic fabric.

DIMENSIONS 40 X 60 X 10/12 CM



100% NATURAL FEATHER

## → NATURAL LATEX 43 X 74 X 12,5

Inner filling 100% natural latex.  
Outer cover 100% organic fabric.

DIMENSIONS 43 X 74 X 12,5 CM



100% NATURAL FEATHER

## → NATURAL LATEX 40 X 60 X 12,5

Inner filling 100% natural latex.  
Outer cover 100% organic fabric.

DIMENSIONS 40 X 60 X 12,5 CM



100% NATURAL FEATHER

## → NATURAL LATEX 40 X 60 X 15

Inner filling 100% natural latex.  
Outer cover 100% organic fabric.

DIMENSIONS 40 X 60 X 15 CM



100% NATURAL FEATHER

# Latex Standard

GRECO STROM LATEX STANDARD PILLOWS have the same physical properties as natural rubber but different texture. They are made of natural rubber and hypoallergenic elastomer. Main feature is the great elasticity that properly

supports the head and neck. Specially designed holes allow proper air circulation that contribute to the maintenance of the ideal temperature.

## → LATEX STANDARD 45 X 65 X 14

NATURAL RUBBER  
& ELASTOMER

Inner filling from natural rubber & hypoallergenic elastomer.  
Outer cover Satin Stripes, detachable and washable.

DIMENSIONS 45 X 65 X 14 CM



## → LATEX STANDARD 40 X 60 X 14

NATURAL RUBBER  
& ELASTOMER

Inner filling from natural rubber & hypoallergenic elastomer.  
Outer cover Satin Stripes, detachable and washable.

DIMENSIONS 40 X 60 X 14 CM



## → LATEX STANDARD KIDS

NATURAL RUBBER  
& ELASTOMER

Inner filling from natural rubber & hypoallergenic elastomer.  
Outer cover Satin Stripes, detachable and washable.

DIMENSIONS 45 X 65 X 7 CM

SUITABLE FROM 5 YEARS OF AGE AND ABOVE.



# Memory Foam Air Mellow

MADE OF MEMORY FOAM with reinforced elasticity, they offer the proper support and help relax the strained neck muscles.

Specially designed holes allow good air circulation, thus helping to maintain the ideal temperature.

## → MEMORY FOAM AIR MELLOW

Inner filling from memory foam super elastic air (with open cellular structure). Outer cover Satin Stripes detachable and washable.

DIMENSIONS 40 X 70 X 14 CM

## MEMORY FOAM WITH VENTILATION SYSTEM



## → MEMORY FOAM AIR MELLOW KIDS

Inner filling from memory foam super elastic air (with open cellular structure). Outer cover Satin Stripes detachable and washable.

DIMENSIONS 40 X 60 X 8 CM

SUITABLE FROM 5 YEARS OF AGE AND ABOVE.

## MEMORY FOAM WITH VENTILATION SYSTEM



# Memory Foam Gel

MADE OF MEMORY FOAM MATERIAL which offers proper support and helps relax strained neck muscles. The special gel covering the surface of the pillow maintains the right temperature making

it ideal for people who have perspiration problems. Antiallergic and antibacterial with excellent restoration and durability.

## → MEMORY FOAM GEL

Inner filling from memory foam gel (memory foam with thermoregulating gel).

Outer cover Satin Stripes, detachable and washable.

DIMENSIONS 40 X 70 X 12 CM

MEMORY FOAM  
GEL



# Memory Foam / Air

GRECO STROM MEMORY FOAM PILLOWS ensure absolute comfort and wellness that only a memory foam can offer you. This material creates "non-gravity" conditions and it was used by NASA to relieve the pressure astronauts had to deal with. The

elasticity of memory foam eliminates the pressure from the head and neck while it relaxes the muscles and offers comfort during sleep. Their construction philosophy highlights them in the most ergonomic products.

## → MEMORY FOAM AIR 12 / 16

They combine all the advantages of memory foam pillows and thanks to their open cellular structure, they allow air to flow to all directions ensuring better hygiene conditions. They ensure maximum performance providing great elasticity, excellent restoration, and durability. Inner filling from memory foam super elastic air (memory foam). Outer washable cover satin stripes.

DIMENSIONS 40 X 70 X 12 CM &  
40 X 70 X 16 CM



## MEMORY FOAM WITH VENTILATION SYSTEM



## → MEMORY FOAM 12 / 16

Inner filling from memory foam.  
Outer washable cover satin stripes.

DIMENSIONS 40 X 70 X 12 CM &  
40 X 70 X 16 CM



## MEMORY FOAM



# First 3D

THE INNER PILLOW MATERIAL IS POLYESTER 3D MICROFIBER and the outer fabric is 100% cotton with special slow-burning treatment. It breathes properly and does not alter its form within

time, which gives it a long lifetime span. It is hypoallergenic, antibacterial, comfortable and has great durability, even during washing.

## → FIRST 3D DOUBLE

3D-7D MICRO FIBER

INNER FILLING FROM 5D - 7D MICRO FIBER and outer cover 100% cotton fabric. Ability to select the suitable position - height and sensation by removing the interior second pillow, relieving the neck and shoulders.

DIMENSIONS 50 X 70 CM



## → FIRST 3D COMFY

3D-7D MICRO FIBER

Inner filling from 3D - 7D micro fiber and outer cover 100% cotton fabric.

DIMENSIONS 50 X 70 CM



## → FIRST 3D PLUS

3D MICRO FIBER

Inner filling from 3D micro fiber and outer cover 100% cotton fabric.

DIMENSIONS 50 X 70 CM





# First 3D

## → FIRST 3D STANDARD

Inner filling from 3D micro fiber and outer cover 100% cotton fabric.

DIMENSIONS 50 X 70 CM

3D MICRO FIBER



## → FIRST 3D KIDS

Inner filling from 3D micro fiber and outer cover 100% cotton fabric.

DIMENSIONS 45 X 65 X 7 CM

SUITABLE FROM 3 YEARS OF AGE AND ABOVE.

3D MICRO FIBER



# Sleep systems

BET ON SLEEPING SYSTEMS TO ALWAYS WIN



You are constantly looking for ways to challenge the interest of your customers. We never stop discovering new ways to offer a wonderful sleep experience.

Comfort is primary importance to achieve your visitors satisfaction. Ultimately a comfortable bed is what will allow guests not only to enjoy an unforgettable sleep and come back again, but they will recommend it to others.



THE TIMELESS VALUE OF HANDMADE

Made by experienced craftsmen.

# Sleep systems

Create your own sleep system  
harmonized with your own unique needs  
and specifications.

## → DOUBLE SLEEP SYSTEM



THE DOUBLE SLEEP SYSTEM CONSISTS OF A BASE AND MATTRESS.  
The ideal base choice in combination with the appropriate  
mattress enables the spine to maintain its proper curvature,  
which prevents muscle strain per areas. We create the ideal  
conditions so as to benefit from restorative and rejuvenating  
effects of sleep.

→ PRODUCED IN A WIDE VARIETY OF FABRICS AND COLORS.

→ PRODUCED IN ALL DESIRED DIMENSIONS.

# Sleep systems

## → TRIPLE SLEEP SYSTEM



THE TRIPLE SLEEP SYSTEM CONSISTS OF A BASE, MATTRESS AND TOPPER.

Its purpose is to provide the ideal body support. The GRECO STROM mattress bases are designed to maximize the benefits of a good mattress. By selecting the appropriate base, the correct body posture is achieved during sleep. Then choose the proper mattress through our customized range which enhances the sense of comfort, allowing uninterrupted sleep. On the upper level, place the topper that idealizes the behavior and completes the spectacular performance of the sleep system. In addition, the use of a topper in sleeping systems makes everyday bedding easy and fast, as it is lightweight.

→ PRODUCED IN A WIDE VARIETY OF FABRICS AND COLORS.

→ PRODUCED IN ALL DESIRED DIMENSIONS.

# Bed bases- Bed base legs

**COMFORT IS PARAMOUNT TO ACHIEVE  
THE SATISFACTION OF YOUR VISITORS.**



Our bed bases is produced in all desired dimensions to cover your needs and blend harmoniously with your rooms. We have a special Service Department for Hotel equipment, which acquires your needs, understands your requirements and can offer you ideas and solutions that absolutely suit you.

We undertake studies, propose special creations for your spaces, while having the know-how for the implementation of integrated sleep furniture. We are by your side from the moment you place your order and for many years, to ensure the excellent quality of our products.





# Bed bases

## → POCKET 7 ZONES

### BASE HEIGHT

20 cm, without foot height customer base selection.  
(+/- deviation 1cm due to use of natural materials).



### FRAME

SOLID FIR TIMBER and base angle connection with cabins. This construction ensures excellent product quality and maximum durability over time.

### BOTTOM BASE LAYER

SOLID TIMBER BOARDS with equal spacing which allows air circulation inside the base.

### RUBBERIZED COIR LAYER

THE RUBBERIZED COIR is a 100% natural product of high strength, derived from the extraction and processing of tropical coconut fibers, which are enriched with natural latex. It is an excellent natural material that ensures proper ventilation and antibacterial protection of the base.

### 7 ZONE POCKET SPRING UNIT 500S

UNIT OF INDEPENDENT SPRINGS TYPE 7 ZONE POCKET SPRINGS HOSTED SEPARATELY IN CLOTH POUCHES with different support zones, allowing optimum pressure distribution and excellent anatomy. The rate of 260pcs per m<sup>2</sup> is maintained

### RUBBERIZED COIR LAYER

### THERMOBOND

STERILE COTTON FIBER INSULATION FILTER that offers the most ideal insulation over springs.

### WOOL WAD

A LAYER OF WOOL FOR A HEALTHY SLEEP. It is distinguished for its strong hypoallergenic action and its thermo regulatory properties.

### PURE COTTON FABRIC

MADE OF 100% TEXTILE FIBERS OF VEGETABLE ORIGIN. The cotton used is produced without use of genetically modified seeds, pesticides and chemicals. It is hypoallergenic and anti-carcinogenic. Processed with anti-peeling treatment for maximum strength and slow-flammable. It is produced according to the European OEKO-TEX STANDARD 100.

→ ALL TYPES OF BED SKIRTS CAN BE ADAPTED ON THE BASE (DETACHABLE BED SKIRT) & ALSO A,B SERIES BED BASE LEGS | PAGE 88.

→ ALL TYPES OF LEGS CAN BE CUSTOMIZED ON THE BASE. BRAKE CASTOR'S WHEELS AVAILABLE ON REQUEST, AS WELL AS WITH SPECIAL LINKS SINGLE BASE COMPOUND TO CREATE A DOUBLE DIMENSION.

# Bed bases

## → BONNELL

### BASE HEIGHT

**20 cm**, without foot height customer base selection.  
(+/- deviation 1cm due to use of natural materials).



### FRAME

**SOLID FIR TIMBER** and base angle connection with cabins. This construction ensures excellent product quality and maximum durability over time.

### BOTTOM BASE LAYER

**SOLID TIMBER BOARDS** with equal spacing which allows air circulation inside the base.

### RUBBERIZED COIR LAYER

THE **RUBBERIZED COIR** is a 100% natural product of high strength, derived from the extraction and processing of tropical coconut fibers, which are enriched with natural latex. It is an excellent natural material that ensures proper ventilation and antibacterial protection of the base.

### BONNELL SPRING UNIT 200B

**BONNELL TYPE SPRINGS** made from specially formulated European antioxidant steel. The rate of 116pcs per m<sup>2</sup> is maintained.

### RUBBERIZED COIR LAYER

### THERMOBOND

**STERILE COTTON FIBER INSULATION FILTER** that offers the most ideal insulation over springs.

### WOOL WAD

A layer of wool for a healthy sleep. It is distinguished for its strong hypoallergenic action and its thermo regulatory properties.

### PURE COTTON FABRIC

**MADE OF 100% TEXTILE FIBERS OF VEGETABLE ORIGIN.** The cotton used is produced without use of genetically modified seeds, pesticides and chemicals. It is hypoallergenic and anti-carcinogenic. Processed with anti-peeling treatment for maximum strength and slow-flammable. It is produced according to the European OEKO-TEX STANDARD 100.

→ ALL TYPES OF BED SKIRTS CAN BE ADAPTED ON THE BASE (DETACHABLE BED SKIRT) & ALSO A,B SERIES BED BASE LEGS | PAGE 88.

→ ALL TYPES OF LEGS CAN BE CUSTOMIZED ON THE BASE. BRAKE CASTOR'S WHEELS AVAILABLE ON REQUEST, AS WELL AS WITH SPECIAL LINKS SINGLE BASE COMPOUND TO CREATE A DOUBLE DIMENSION.

# Bed bases

→ EASY

BASE HEIGHT

**20 cm**, without foot height customer base selection.  
(+/- deviation 1cm due to use of natural materials).



## FRAME

SOLID FIR TIMBER and base angle connection with cabins. This construction ensures excellent product quality and maximum durability over time.

→ ALL TYPES OF BED SKIRTS CAN BE ADAPTED ON THE BASE (DETACHABLE BED SKIRT) & ALSO A,B SERIES BED BASE LEGS | PAGE 88.

→ ALL TYPES OF LEGS CAN BE CUSTOMIZED ON THE BASE. BRAKE CASTOR'S WHEELS AVAILABLE ON REQUEST, AS WELL AS WITH SPECIAL LINKS SINGLE BASE COMPOUND TO CREATE A DOUBLE DIMENSION.

## TOP BASE LAYER

SOLID TIMBER BOARDS WITH EQUAL SPACING which allows air circulation inside the base.

## ACCOPIATO PAD

SPECIAL FOAM PAD with foam material that allows ventilation of the base.

# Bed bases

## → BASIC

### BASE HEIGHT

**20 cm**, without foot height customer base selection.  
(+/- deviation 1cm due to use of natural materials).



### FRAME

SOLID FIR TIMBER and base angle connection with cabins. This construction ensures excellent product quality and maximum durability over time.

→ ALL TYPES OF BED SKIRTS CAN BE ADAPTED ON THE BASE (NON DETACHABLE BED SKIRT) & ALSO A,B SERIES BED BASE LEGS | PAGE 88.

→ ALL TYPES OF LEGS CAN BE CUSTOMIZED ON THE BASE. BRAKE CASTOR'S WHEELS AVAILABLE ON REQUEST, AS WELL AS WITH SPECIAL LINKS SINGLE BASE COMPOUND TO CREATE A DOUBLE DIMENSION.

### TOP BASE LAYER

SOLID TIMBER BOARDS WITH EQUAL SPACING which allows air circulation inside the base.

### INNER MICROFOAM

HIGH DENSITY and high strength foam.

### ACCOPIATO PAD

SPECIAL FOAM PAD with foam material that allows ventilation of the base..

# Bed bases

## → QUILTED BASE

Handmade quilted base adds a luxurious touch to your sleeping space, achieving the perfect balance between comfort and style.



### FRAME

SOLID FIR TIMBER and base angle connection with cabins. This construction ensures excellent product quality and maximum durability over time.

### TOP BASE LAYER

SOLID TIMBER BOARDS WITH EQUAL SPACING which allows air circulation inside the base.

### INNER MICROFOAM

HIGH DENSITY and high strength foam.

### ACCOPIATO PAD

SPECIAL FOAM PAD with foam material that allows ventilation of the base.

→ NON DETACHABLE QUILTED BED SKIRT.

→ A, B SERIES BED LEGS CAN BE CUSTOMIZED ON THE BASE. BRAKE CASTOR'S WHEELS AVAILABLE ON REQUEST, AS WELL AS WITH SPECIAL LINKS SINGLE BASE COMPOUND TO CREATE A DOUBLE DIMENSION.

→ BASE HEIGHT 20 CM, WITHOUT FOOT HEIGHT CUSTOMER BASE SELECTION.

→ (+/- DEVIATION 1 CM DUE TO USE OF NATURAL MATERIALS)

# Bed bases

## → CROSS BASE

Minimalism meets modern aesthetics in the Cross bed base design that perfectly combines simplicity with modern design, giving high aesthetics to your spaces.



Reinforced sides

Anatomical frame board with dense planking, 3 cm spacing.

- CROSS BEAM HEIGHT (OUTWARDS) 30 CM,  
+/- DEVIATION 1CM DUE TO USE OF NATURAL MATERIALS.
- CROSS BEAM THICKNESS (ON EACH SIDE) 5 CM.
- C SERIES BED BASE LEGS CAN BE ADJUSTED | PAGE 88.
- DETACHABLE FABRICS
- ALL TYPES OF BED SKIRTS CAN BE ADAPTED ON THE  
BASE (DETACHABLE BED SKIRT).

# Bed bases

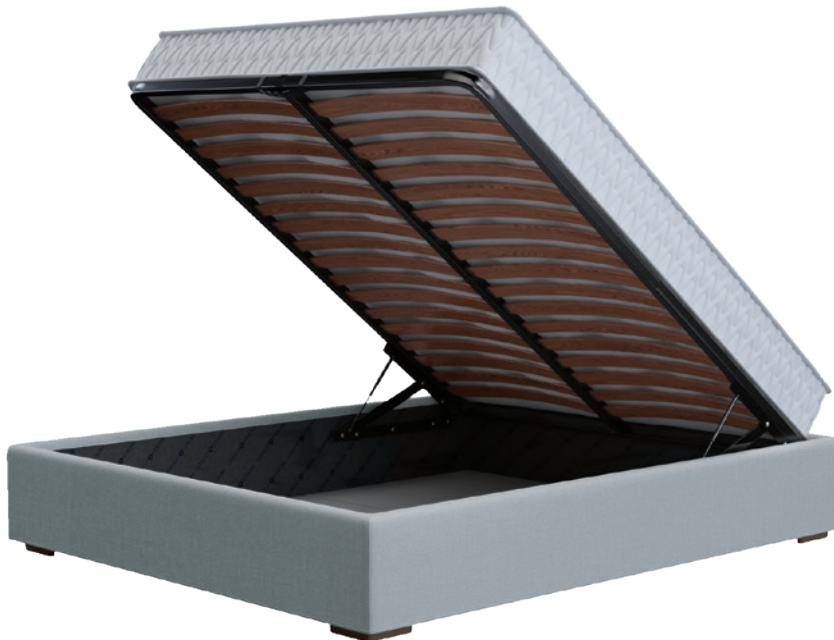
## → STORAGE

### CROSS BEAM HEIGHT

Outwards 30 cm.

Interior height beneficial 24 cm.

(+/- deviation 1cm due to use of natural materials).



BEDS WITH STORAGE MECHANISM are the smartest and most practical solution for more useful storage space as they are ideally designed to provide the possibility of using every inch of their interior surface.

- REINFORCED SIDES (CROSS BEAM) AND WOODEN FLOOR.
- ANATOMICAL FRAME BOARD WITH DENSE PLANKING, 5 CM SPACING
- SHOCK ABSORBERS AND HEAVY-DUTY MECHANISMS.
- ALL TYPES OF BED SKIRTS CAN BE ADAPTED ON THE BASE (DETACHABLE BED SKIRT).
- DETACHABLE FABRICS
- C SERIES BED BASE LEGS CAN BE ADJUSTED | PAGE 88.



# Bed bases

## → EXTRA BED



THE SLIDING MECHANISM provides the possibility and the comfort, so that depending on the case, you have a double bed or two single beds. In addition, it provides space saving after easy storage under the first bed. It's metallic construction guarantees durability over time.

- AVAILABLE FOR MATTRESS ON TOP DIMENSIONS UP TO 100 X 200 CM AND MATTRESS ON BOTTOM DIMENSIONS 74 X 182 CM OR 84 X 182 CM  
(+/- DEVIATION ICM DUE TO USE OF NATURAL MATERIALS)
- BED SKIRT WITH OPEN PLEAT TYPE CAN BE ADAPTED. | PAGE 90, #No5.
- DETACHABLE FABRICS .

# Bed base legs

## → BED BASES ACCESSORIES / BED BASE LEGS

### → A SERIES

- A.1** Wooden cylinder bed leg  
 • 5 COLOURS  
 • HEIGHT 12 CM



- A.2** Cylindrical metal bed leg  
 • HEIGHT 12 CM



### → B SERIES

- B.1** Cylindrical bed leg with metallic detail  
 • 5 COLOURS  
 • HEIGHT 12 CM



- B.2** Metallic corner bed leg  
 • HEIGHT 13,5 CM

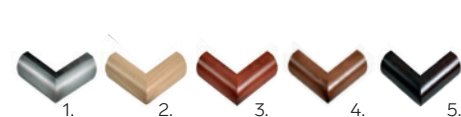


- B.3** Wooden turned capped bed leg  
 • 5 COLOURS  
 • HEIGHT 12 CM

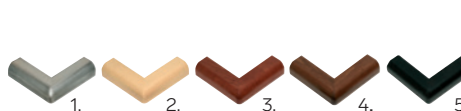


### → C SERIES

- C.1** Wooden square bed leg  
 • 5 COLOURS  
 • HEIGHT 7,5 CM  
 (Available only for bed base with Storage Base unit)



- C.2** Wooden square bed leg  
 • 5 COLOURS  
 • HEIGHT 3,5 CM  
 (Available only for bed base with Storage Base unit)



- C.3** Metallic square bed leg  
 • HEIGHT 3,5 CM  
 (Available only for bed base with Storage Base unit)



### → EXTRAS

Special monolithic union link bases for the creation of dual bases.



Rotary wheel with castor brake



# Bed base legs

→ BED BASES ACCESSORIES / **BED BASE LEGS**



## INFO

The wooden legs of the bases and the beds are made of solid beech wood and are available in different designs and color shades.

# Bed skirts

## → BED BASES ACCESSORIES / **BED SKIRTS**

### → **01**

BED SKIRT WITH OPEN PLEAT  
& DECORATIVE CORD



### → **02**

BED SKIRT WITH OPEN PLEAT  
& DECORATIVE BUTTON



### → **03**

BED SKIRT WITH OPEN PLEAT



### → **04**

BED SKIRT WITH STITCH CUTTER



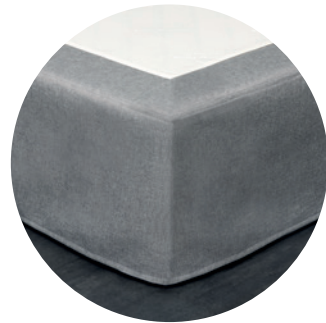
## INFO

They cover all 4 sides of the base with no headboard. In case of headboard adjustment they cover the 3 open sides.  
There is the possibility of a different sewing option of the bed skirt.

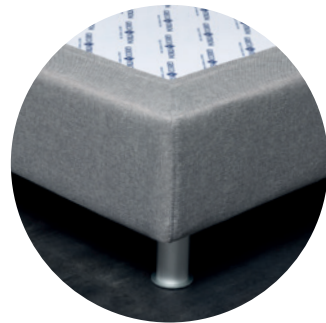
# Bed skirts

## → BED BASES ACCESSORIES / **BED SKIRTS**

### → **05** BED SKIRT CLOSED



### → **06** SIMPLE BED SKIRT



### → **07** BED SKIRT WITH PERIMETER PLEATS



## INFO

They cover all 4 sides of the base with no headboard. In case of headboard adjustment they cover the 3 open sides.  
There is the possibility of a different sewing option of the bed skirt.

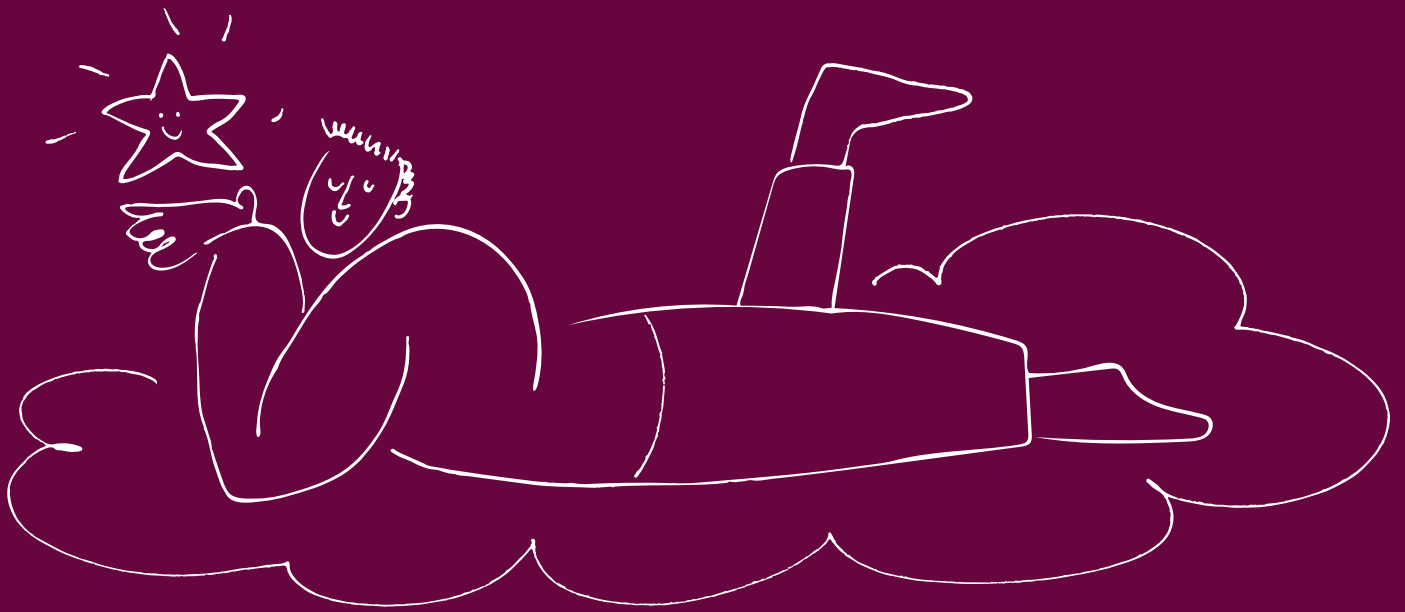
# Hybrid sofas

INVENTINE EFFICIENCY & FLEXIBILITY



As experienced bed manufacturers and experts in true sleeping comfort, we apply the same strict standards in the design process and sofa construction. Through a modern and elegant collection, you are offered an extra opportunity to improve efficiency and flexibility of use of your rooms.

The specially designed **GRECO STROM** sofas and bed stools can convert a double bedroom into a family room. Using interior mechanisms of advanced technology, we ensure the maximum quality of construction.



HYBRID SOFAS / ARMCHAIR BED / STOOL BED / BEDS /  
BEDROOM FURNITURE / SUNBED MATTRESSES



# Hybrid sofa

→ **NAFSIKA** / SOFA BED WITH SLIDING MECHANISM

A bed that has nothing to envy from this sofa.

The sofa bed offers the absolute comfort of a double bed or the use of two single beds and the aesthetic superiority of a three-seat sofa.



SOFA BED DIMENSIONS width x depth x height	206 cm x 88 cm x 92 cm	206 cm x 98 cm x 92 cm
OUTER OPEN DIMENSIONS width x depth x height	206 cm x 164 cm x 92 cm	206 cm x 184 cm x 92 cm
MATTRESS SIZE width x height	75 cm x 185 cm (seat) 74 cm x 182 cm (sliding mechanism)	85 cm x 185 cm (seat) 84 cm x 182 cm (sliding mechanism)

The above dimensions apply on arm thickness 10 cm. Ability to choose arm thickness 10-15-20 cm.  
Detachable fabrics. Dimension deviation +/- 3 cm.

# Hybrid sofa

## → ARTEMIS / SOFA BUNK BED

A comfortable sofa of high aesthetics which is easily transformed in a bunk that accommodates two people offering an extremely comfortable and restful sleep.



SOFA BED DIMENSIONS width x depth x height	225 cm x 102 cm x 95 cm
OUTER OPEN DIMENSIONS width x depth x height	225 cm x 120 cm x 175 cm
MATTRESS SIZE width x height	80 cm x 190 cm (seat) (top & bottom bunk bed)

Detachable fabrics. Maximum strength per bunk bed 110 Kg.  
Dimension deviation +/- 3 cm.

# Hybrid sofa

## → MYRON / FOLDABLE SOFA BED

Because of its functionally designed mechanism, the Myron sofa allows easy and fast conversion into a bed, utilizing your space.

The ideal solution for all situations where maximum flexibility is required without compromises on comfort.

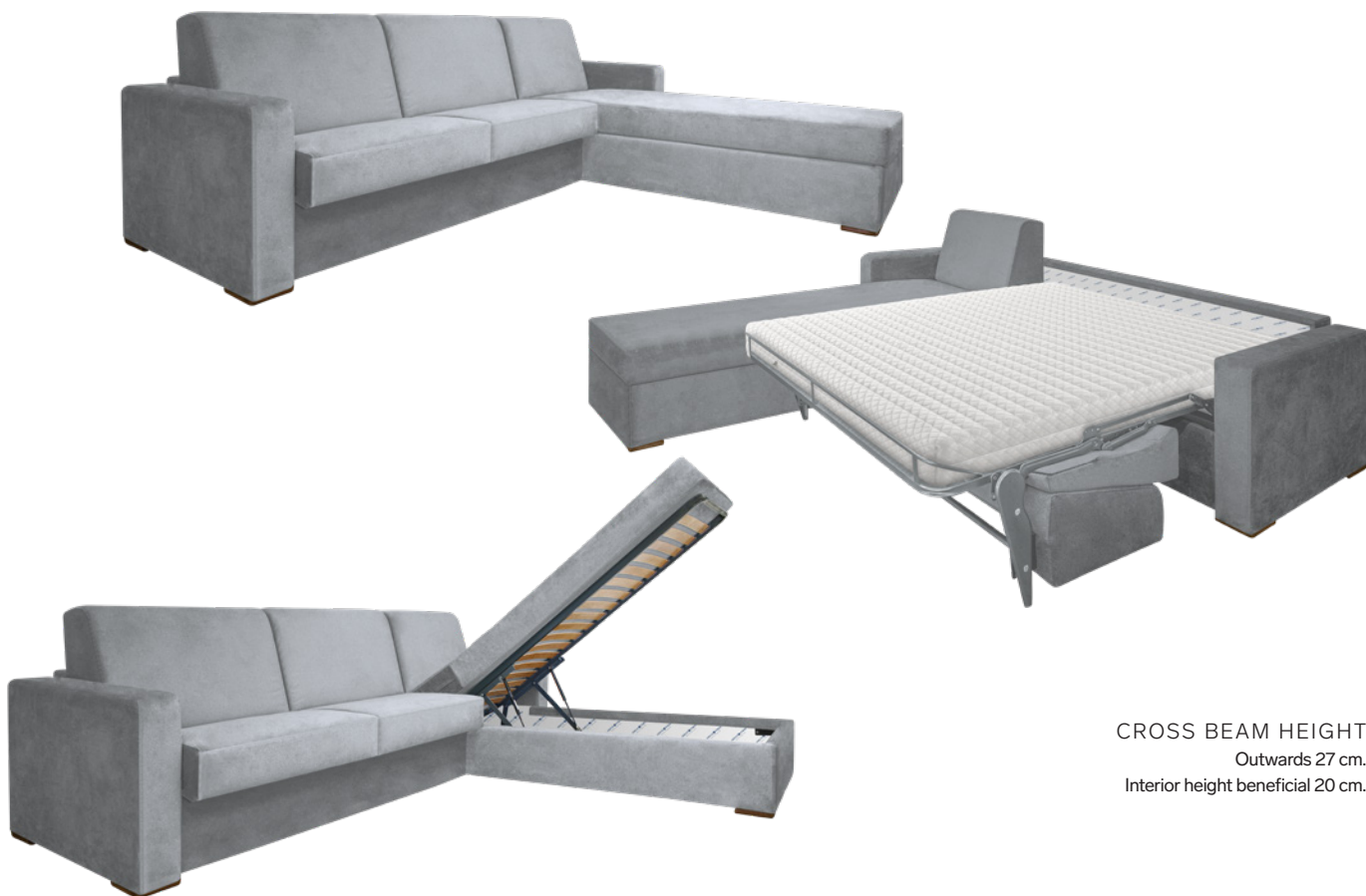


SOFA BED DIMENSIONS width x depth x height	135 cm x 104 cm x 93 cm	165 cm x 104 cm x 93 cm	185 cm x 104 cm x 93 cm	205 cm x 104 cm x 93 cm	225 cm x 104 cm x 93 cm
OUTER OPEN DIMENSIONS width x depth x height	135 cm x 212 cm x 66 cm	165 cm x 212 cm x 66 cm	185 cm x 212 cm x 66 cm	205 cm x 212 cm x 66 cm	225 cm x 212 cm x 66 cm
MATTRESS SIZE width x height	73 cm x 196 cm	103 cm x 196 cm	123 cm x 196 cm	143 cm x 196 cm	163 cm x 196 cm

# Hybrid sofa

## → **SOFIA** / SOFA CORNER BED WITH STORAGE

The **SOFIA** sofa harmonizes usability with comfort and elegance. Its ergonomic design provides storage space and the possibility of easy conversion into a bed that can accommodate up to three guests, ensuring the maximum efficiency of your space.



CROSS BEAM HEIGHT  
Outwards 27 cm.  
Interior height beneficial 20 cm.

SOFA BED DIMENSIONS width x depth x height	292 cm x 245 cm x 93 cm	312 cm x 245 cm x 93 cm
MECHANISM MATTRESS SIZE width x length	143 cm x 196 cm	163 cm x 196 cm
CORNER MATTRESS SIZE width x length	80 cm x 200 cm	80 cm x 200 cm

# Hybrid sofa

→ **AVGI** / SOFA BED TRUNK

A comfortable three-seat sofa that adorns your space promoting relaxation and rest. Its unique design provides the possibility of storage while at the same time it can accommodate a visitor.



CROSS BEAM HEIGHT  
Outwards 32 cm.  
Interior height beneficial 24 cm.



SOFA BED DIMENSIONS width x depth x height	206 cm x 88 cm x 95 cm	206 cm x 98 cm x 95 cm
MATTRESS SIZE width x length	75 cm x 185 cm	85 cm x 185 cm

The above dimensions apply on arm thickness 10 cm. Ability to choose arm thickness 10-15-20 cm. Anatomical frame board with dense planking, 3 cm spacing. Shock absorbers and heavy-duty mechanisms. Class C 2, C 3 bed base legs can be adjusted | page 84. Detachable fabrics. Dimension deviation +/- 3 cm.

# Hybrid sofa

## → HERMIONE / FOLDABLE SOFA BED

Designed with modern aesthetics and functionality in mind, the **Hermione** sofa can be used as a single bed. Additionally with the user-friendly folding mechanism, it can be easily and quickly transformed into a super-double bed with a headboard. Its minimalist design not only serves a practical purpose, but also adds a touch of elegance to your space.



OUTER DIMENSIONS CLOSED width x depth x height	205 cm x 107 cm x 85 cm
OUTER DIMENSIONS OPEN width x depth x height	205 cm x 230 cm x 113 cm
VITAFOAM NO 5000 FOLDING MATTRESS SIZE width x length	161 cm x 192 cm

# Hybrid sofa

## → KLIO / SOFA BED

A minimal sofa of high aesthetics is easily transformed into a double bed offering an extremely comfortable and restful sleep. It perfectly combines modern design with practical functionality, as it effortlessly transforms from an elegant living room solution to a hospitality space.



OUTER DIMENSION CLOSED width x depth x height	205 cm x 98cm x 75cm
OUTER DIMENSION OPEN width x depth x height	205 cm x 140 cm x 38 cm



# Armchair bed

→ **LYDIA** / ARMCHAIR FOLDABLE BED

When an armchair of high aesthetics is "transformed" into a comfortable single bed, then **LYDIA** is created. Practical and elegant, it quickly and easily transforms into a comfortable single bed offering a restful and relaxing sleep.



ARMCHAIR BED DIMENSIONS width x depth x height	90 cm x 90 cm x 80 cm
OUTER OPEN DIMENSIONS width x depth x height	90 cm x 207 cm x 80 cm
MATTRESS SIZE width x length	75 cm x 197 cm

Detachable fabrics.  
Dimension deviation +/- 2 cm.

# Armchair bed

→ **DAPHNE** / ARMCHAIR FOLDABLE BED

A design has more value when you can combine it with "smart" functionality. Practical and comfortable armchair, easily converted into a bed with a single motion.



ARMCHAIR BED DIMENSIONS width x depth x height	80 cm x 85 cm x 63 cm
OUTER OPEN DIMENSIONS width x depth x height	80 cm x 198 cm x 21 cm
MATTRESS SIZE width x length	80 cm x 198 cm

# Stool bed

→ **ISMINI** / STOOL BED

Discover **ISMINI**: a stool of special aesthetics that hides much more inside. To be precise, it "hides" a comfortable single bed of excellent quality and exceptional comfort!



STOOL BED DIMENSIONS width x depth x height	75 cm x 75 cm x 45 cm	85 cm x 75 cm x 45 cm
OUTER OPEN DIMENSIONS width x depth x height	75 cm x 198 cm x 45 cm	85 cm x 198 cm x 45 cm
MATTRESS SIZE width x length	75 cm x 198 cm	85 cm x 198 cm

Detachable fabrics.  
Dimension deviation +/- 1 cm.

# Bed benches

## → PRIAMOS



**DIMENSIONS**  
Length 120 cm x Depth 50 cm x Height 46 cm.  
Dimension deviation +/- 1 cm.



## → MANDO



**DIMENSIONS**  
Length 120 cm x Depth 50 cm x Height 46 cm.  
Dimension deviation +/- 1 cm.



## INFO

Produced in a wide variety of fabrics and colours.  
Class A & B legs can be adjusted | page 84.

# Bed benches

## → PEGASUS



**DIMENSIONS**  
Length 120 cm x Depth 50 cm x Height 46 cm.  
Dimension deviation +/- 1 cm.



## → ARETI



**DIMENSIONS**  
Length 120 cm x Depth 50 cm x Height 46 cm.  
Dimension deviation +/- 1 cm.



## INFO

Produced in a wide variety of fabrics and colours.  
Class A & B legs can be adjusted | page 84.

# Beds

→ AEGLI



→ ARIADNE



→ AIAS



→ ARMONIA



→ ALINA



→ ATHENA



→ ALKISTIS



→ AURA



→ ANTIGONE



→ CALYPSO





# Beds

→ DAREIOS



→ FEDRA



→ EKAVI



→ GAIA



→ ELECTRA



→ GALINI



→ EROFILI



→ HEPHAESTUS



→ EROS



→ HERMES





# Beds

→ IASON



→ KALLIROI



→ IKAROS



→ KRITON



→ IOKASTI



→ KYVELI



→ IRO



→ LEANDROS



# Beds

→ NEFELI



→ PHAEDON



→ MYRTO



→ PLATON



→ NISOS



→ PARIS



# Bedroom furniture

## → MORAL / ELEGANCE & MODERNISM



BEDSIDE  
TABLES



MIRRORS



DRESSERS

THE MORAL BEDSIDE TABLE AND DRESSER are designed to highlight elegance with modernism. Produced in Greece and made of solid beech wood, it has a special mechanism for smooth and silent operation of the drawers. The nightstand has 2 drawers and the dresser has 3 practical and spacious drawers.

### 2 COLOR OPTIONS

Natural & Chestnut

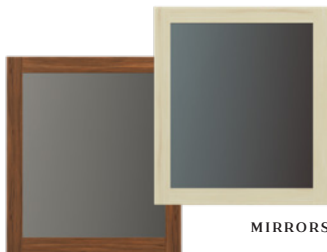
### DIMENSIONS (L\*W\*H)

Dresser	100 x 45,5 x 84,5 cm
Bedside table	47 x 36 x 50 cm
Mirror	80 x 2 x 90 cm

## → NOBLE / TIMELESSNESS & LUXURY



BEDSIDE  
TABLES



MIRRORS



DRESSERS

THE NOBLE BEDSIDE TABLE AND DRESSER highlights the timeless value of luxury construction. Produced in Greece and made of solid beech wood, it has a special mechanism for smooth and silent operation of the drawers. The bedside table and the dresser are both available with 3 practical and spacious drawers.

### 2 COLOR OPTIONS

Natural & Chestnut

### DIMENSIONS (L\*W\*H)

Dresser	102 x 46 x 85 cm
Bedside table	50 x 40 x 60 cm
Mirror	80 x 2 x 90 cm

## → POETRY / MINIMALISM & ELEGANCE



BEDSIDE  
TABLES



MIRRORS



DRESSERS

THE POETRY BEDSIDE TABLE AND DRESSER highlights minimalism with elegance. Produced in Greece from solid beech wood, it has a special mechanism for smooth and silent operation of the drawers. The nightstand has 1 drawer, and the dresser has 3 practical and spacious drawers.

### 2 COLOR OPTIONS

Natural & Chestnut

### DIMENSIONS (L\*W\*H)

Dresser	101 x 45,5 x 84 cm
Bedside table	47 x 36 x 50 cm
Mirror	80 x 2 x 90 cm

# Sunbed mattresses

→ 01



→ 02



## INFO

WE MANUFACTURE PROFESSIONAL MATTRESSES FOR BEACH SUNBEDS, HOTEL POOLS, BEACH BARS ETC. with filling of reinforced foam in any thickness and dimensions your needs require. All mattresses have zippers so they can be washed and velcro

straps or laces for proper application on the lounger. The fabrics and leathers we use, have special technical specifications that stand time, are waterproof, indelible & washable.

Discover more at

**[grecostrom.gr](http://grecostrom.gr)**





Wake Up  
New