

Body topia

2022

Bedtime

GRECO STROM CERTIFICATIONS



All **GRECO STROM** products are manufactured to the strictest specifications as defined by the European Union and have their production processes certified by international certification Institutions Bureau Veritas, LRQA Business Assurance, Swiss Approval International & MIRTEC SA.



Stories

Design, production, quality control & distribution of the company's products have been certified according to ISO 9001 International Quality Management System, ISO 14001 International Environmental Management System, ISO 13485 International Medical Quality System.

With absolute respect to the environment, **GRECO STROM** belongs to the innovators of the alternative packaging management system in collaboration with the Greek Recycling Recovery Company.



4 Bodytopia

MATTRESSES SPECIALLY DESIGNED FOR EVERYONE



Mattresses that respond to the desire to rejuvenate and relax within the most personal eight hours of the day.

Positive emotions that accompany the experience of good sleep.

Moments of dreaming, reminiscence, rest, moments of true psychosomatic uplift and satisfaction.

5 Collection



6

Bodytopia

01 BOUNCE MATTRESS

7 YEARS GUARANTEE



PRODUCED IN
ALL DESIRE DIMENSIONS

(+/-1 dimensional variation due to material nature)



7

Bounce



Bodytopia



VENT & FRESH

Special open ventilation cells that ensure air circulation towards all directions in the mattress.

HANDLES

For easy rotation of the mattress.

ZIPPER

Allows the optical control of materials.

Mattress height 32cm (+/-1 dimensional variation due to material nature)

Bounce

FORESTEX FABRIC™

FOR THE PRODUCTION OF FORESTEX FABRIC, we use yarn derived from a natural, renewable and biodegradable source, wood pulp. The special characteristic of this yarn is the cool and silky touch, a texture which gives a natural 'glow'. The FORESTEX fabric is highly breathable with very good moisture absorption characteristics and stands out for its thermoregulatory properties. In addition, it offers great comfort to movements while embracing harmoniously the body. The perfect combination of excellent durability, soft sensation and luxurious appearance.

MEMORY FOAM GEL INN

MEMORY FOAM enriched with thermosetting gel. From the most exciting discoveries in material technology memory foam. Provides optimal body support, evenly distributing weight, resulting in relief of pressure points and proper alignment of the spine. In addition, its open cellular structure material, allows air breathability.

POLYESTER WAD

WHITE WAD with certified hypoallergenic properties from 100% polyester antibacterial fiber. It allows the internal ventilation of the mattress and removes moisture. It has excellent strength, elasticity and resilience.

CELL FOAM INN

Specialized foam with the latest technology, especially designed for quilting.

QUILTED HILL JUMP SYSTEM

QUILT PROCESS with JUMP system for extremely soft sensation, great rest and aesthetically perfect result achieved by state-of-the-art machines.

NATURAL LATEX LAYER

NATURAL LATEX LAYER. It is a natural milky liquid, derived from the extracts of the tropical tree. Its production process with the latest technology machines giving us a material of unique elasticity, flexibility and excellent restoration. It follows and perfectly adapts to the body shape ensuring distribution of the pressure exerted during sleep. In this way, it promotes proper blood circulation in the spine and the limbs. Its numerous holes, allow optimal ventilation of the mattress, preventing the development of germs and mites. A high-quality material, free of toxic and allergenic substances, which maintains its shape and comfort over time.

INTEX FOAM LAYER

EXCELLENT FLEXIBILITY allows evenly distributed weight, which prevents the creation of pressure points. In addition, it is breath-able and helps maintain the ideal sleeping temperature.

TABLET MICRO POCKET SPRINGS 1000s

The new unit of individual springs type TABLET MICRO POCKET SPRINGS 1000S offers a high level of support and comfort. Each spring is hosted separately in fabric pockets allowing each spring unit to react completely independently and ensures noise avoidance. In combination with the independent spring unit 7 ZONE MICRO POCKET SPRINGS 1000S additional resistance is provided when more pressure is exerted, therefore increased support is provided when and where needed, thus contributing to the maximum anatomical performance of the layer. In addition, the small diameter of each micro pocket spring results in the maximum number of springs per m², thus providing the highest degree of support. The rate of 500 pcs per m² is maintained.

GRAND RELIEF FOAM LAYER

SPECIAL HIGH ELASTICITY FOAM which absorbs vibration and in combination with the TABLET MICRO POCKET SPRINGS 1000S achieves maximum performance behavior of the mattress.

TABLET MICRO POCKET SPRINGS 1000s

The new unit of individual springs type TABLET MICRO POCKET SPRINGS 1000S offers a high level of support and comfort. Each spring is hosted separately in fabric pockets allowing each spring unit to react completely independently and ensures noise avoidance. In combination with the independent spring unit 7 ZONE MICRO POCKET SPRINGS 1000S additional resistance is provided when more pressure is exerted, therefore increased support is provided when and where needed, thus contributing to the maximum anatomical performance of the layer. In addition, the small diameter of each micro pocket spring results in the maximum number of springs per m², thus providing the highest degree of support. The rate of 500 pcs per m² is maintained.

FRAME SUPPORT

STAINLESS STEEL FRAMEWORK SUPPORT ensures spring stabilization and mattress dimension.

UPPPER BORDER SUPPORT SYSTEM

GRECO STROM through constant search and implementation of innovative technologies, has designed the new perimetric mattress support system, limiting recession in the process of the vertical pressure of its weight. It consists of increased density FOAM SUPPORT with special V-shaped notches along the sides and FOAM JUMP QUILTED SUPPORT process for the exterior mattress fabric.

SC FIBER FILTER

FILTER FROM STERILIZED COTTON FIBERS offers ideal insulation and support.

7 ZONE MICRO POCKET SPRING UNIT 1000s

Independent spring unit type 7 ZONE MICRO POCKET SPRING 1000S that are hosted separately in fabric pockets. The 7 different support zones allow the individual elasticity of each spring and provide a high degree of support. This regulates the distribution of pressure and ensures ergonomic adjustment to body weight by evolving anatomy to the highest degree. The rate of 500 pcs per m² is maintained.

SC FIBER FILTER

FILTER FROM STERILIZED COTTON FIBERS offers ideal insulation and support.

GRAND RELIEF FOAM INN

Elastic foam specially designed for quilt treatment.

POLYESTER WAD

FORESTEX FABRIC™

7 YEARS GUARANTEE



This product has been tested for durability and complies with the requirements of the European standard: EN 1957: 2012 & EN 1334: 1999

The inner materials are described in order of placement on the mattress. One side mattress. No turning required.

Bodytopia

02 SYSTEM MATTRESS

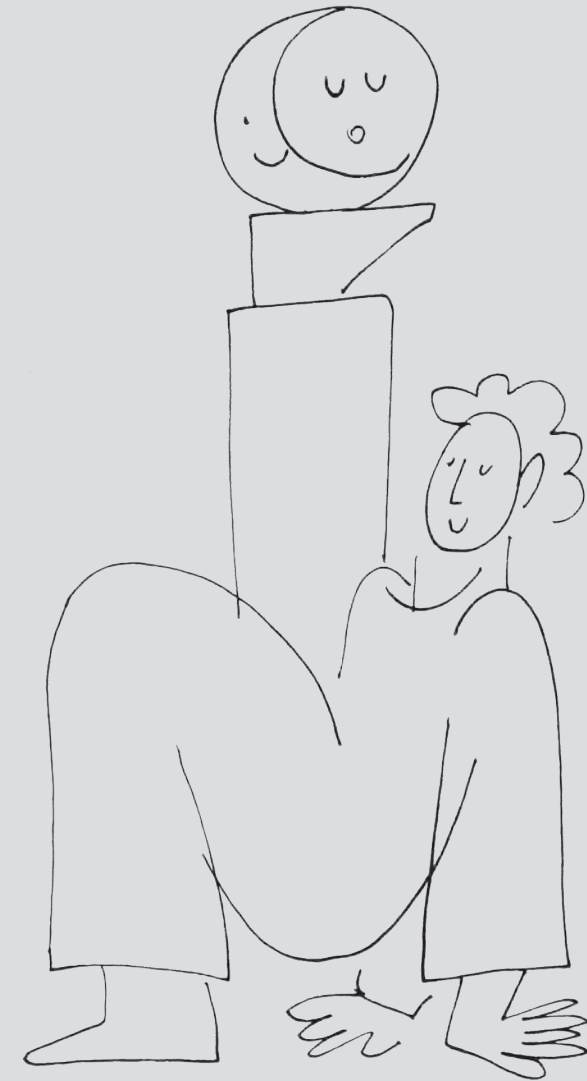
7 YEARS GUARANTEE

PRODUCED IN
ALL DESIRE DIMENSIONS

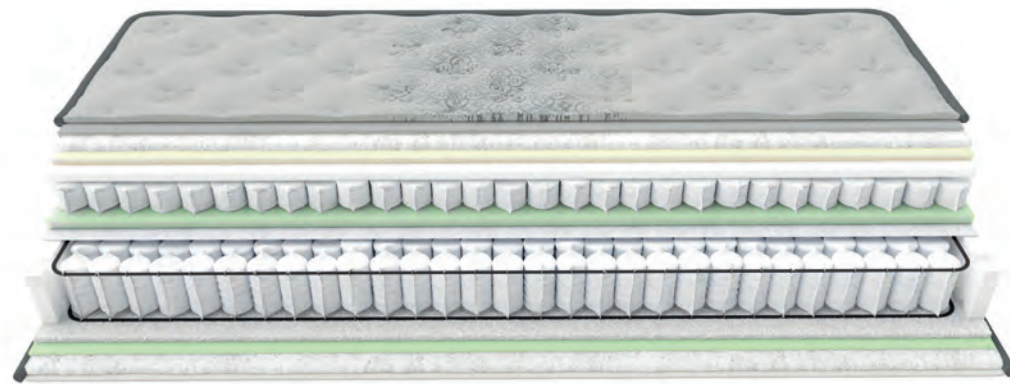
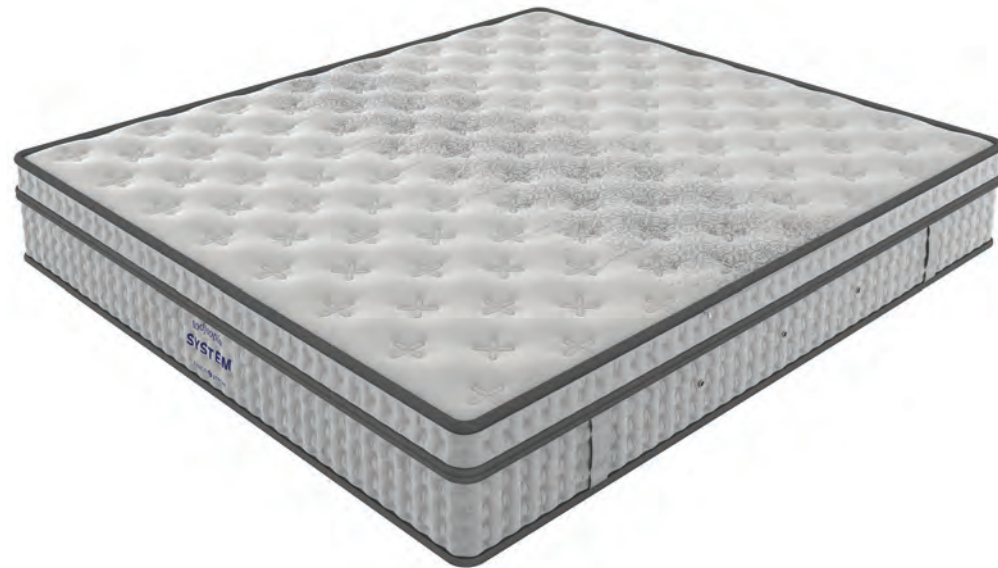
(+/-1 dimensional variation due to material nature)



System



Bodytopia



VENT & FRESH

Special open ventilation cells that ensure air circulation towards all directions in the mattress.

HANDLES

For easy rotation of the mattress.

ZIPPER

Allows the optical control of materials.

Mattress height 32cm (+/-1 dimensional variation due to material nature)

System

FORESTEX FABRIC™

FOR THE PRODUCTION OF FORESTEX FABRIC, we use yarn derived from a natural, renewable and biodegradable source, wood pulp. The special characteristic of this yarn is the cool and silky touch, a texture which gives a natural 'glow'. The FORESTEX fabric is highly breathable with very good moisture absorption characteristics and stands out for its thermoregulatory properties. In addition, it offers great comfort to movements while embracing harmoniously the body. The perfect combination of excellent durability, soft sensation and luxurious appearance.

ACTIVE FOAM INN

SOFT AND DURABLE FOAM tested and suitable for quilted mattress treatment.

POLYESTER WAD

WHITE WAD with certified hypoallergenic properties from 100% polyester antibacterial fiber. It allows the internal ventilation of the mattress and removes moisture. It has excellent strength, elasticity and resilience.

CELL FOAM INN

Specialized foam with the latest technology, especially designed for quilting.

QUILTED HILL JUMP SYSTEM

QUILT PROCESS with JUMP system for extremely soft sensation, great rest and aesthetically perfect result achieved by state-of-the-art machines.

INTEX FOAMLAYER

EXCELLENT FLEXIBILITY allows evenly distributed weight, which prevents the creation of pressure points. In addition, it is breath-able and helps maintain the ideal sleeping temperature.

MINI POCKET SPRINGS UNIT

THE NEW UNIT OF INDIVIDUAL SPRINGS type MINI POCKET offers a high level of support and comfort. Each spring is hosted separately in fabric pockets allowing each spring unit to react completely independently. In combination with the independent spring unit POCKET SPRINGS SCAN SYSTEM it provides extra resistance when there is more pressure, which means that increased support is secured when and where needed. The maximum anatomical performance of the mattress is achieved and the rate of 260pcs per m² is maintained.

GRAND RELIEF FOAM LAYER

SPECIAL HIGH ELASTICITY FOAM which absorbs vibration and in combination with the MINI POCKET springs achieves maximum performance behavior of the mattress.

FLEXCOAT

A SPECIFIC FLEXIBLE AND RESISTANT 3D material, which works as an excellent raw material protection system, thus contributing to proper function and mattress comfort.

POCKET SPRINGS SCAN SYSTEM

THE ADVANCED SCAN SYSTEM TECHNOLOGY as well as the specially studied cylindrical shape of the independent springs, provide a high degree of support while their main advantage is the reduced sense of motion transfer. In addition, it ensures point support in any sleeping position you prefer, as well as noise avoidance. The rate of 260pcs per m² is maintained.

FRAME SUPPORT

STAINLESS STEEL FRAMEWORK SUPPORT ensures spring stabilization and mattress dimension.

UPPPER BORDER SUPPORT SYSTEM

GRECO STROM through constant search and implementation of innovative technologies, has designed the new perimetric mattress support system, limiting recession in the process of the vertical pressure of its weight. It consists of increased density FOAM SUPPORT with special V-shaped notches along the sides and FOAM JUMP QUILTED SUPPORT process for the exterior mattress fabric.

SC FIBER FILTER

FILTER FROM STERILIZED COTTON FIBERS offers ideal insulation and support.

GRAND RELIEF FOAM INN

Elastic foam specially designed for quilt treatment.

POLYESTERWAD

FORESTEX FABRIC™

7 YEARS GUARANTEE



This product has been tested for durability and complies with the requirements of the European standard: EN 1957: 2012 & EN 1334: 1999

The inner materials are described in order of placement on the mattress. One side mattress. No turning required.

Bodytopia

03 MODUS MATTRESS

7 YEARS GUARANTEE

PRODUCED IN
ALL DESIRE DIMENSIONS

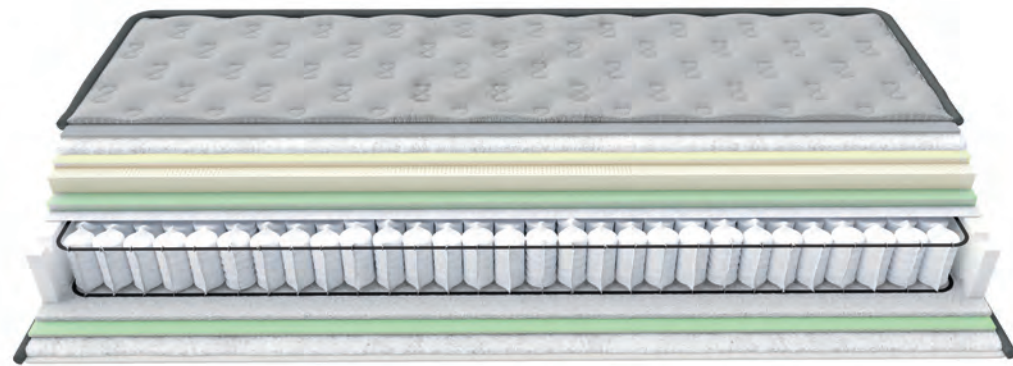
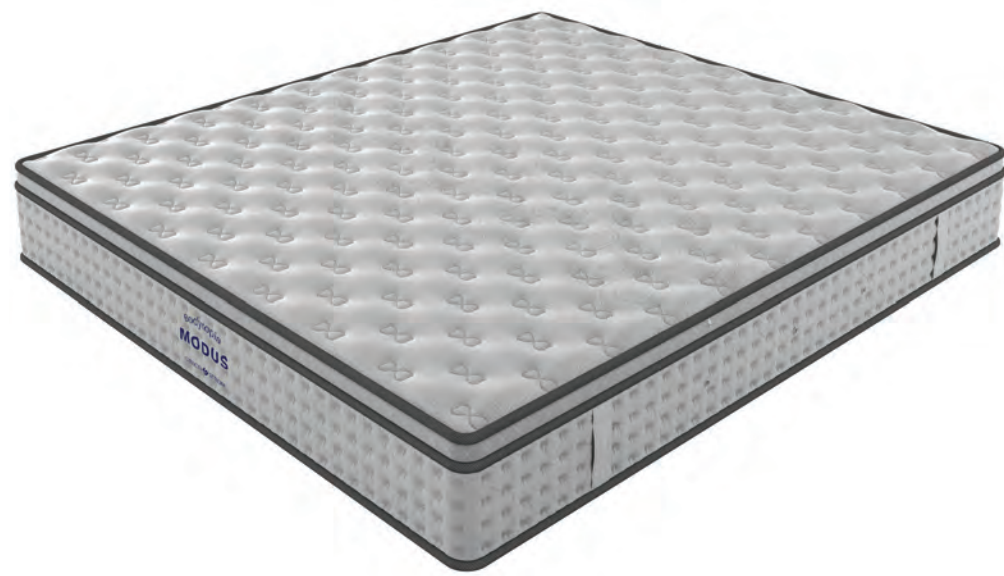
(+/-1 dimensional variation due to material nature)



Modus



Bodytopia



VENT & FRESH

Special open ventilation cells that ensure air circulation towards all directions in the mattress.

HANDLES

For easy rotation of the mattress.

ZIPPER

Allows the optical control of materials.

Mattress height 30cm (+/-1 dimensional variation due to material nature)

Modus

FORESTEX FABRIC™

FOR THE PRODUCTION OF FORESTEX FABRIC, we use yarn derived from a natural, renewable and biodegradable source, wood pulp. The special characteristic of this yarn is the cool and silky touch, a texture which gives a natural 'glow'. The FORESTEX fabric is highly breathable with very good moisture absorption characteristics and stands out for its thermoregulatory properties. In addition, it offers great comfort to movements while embracing harmoniously the body. The perfect combination of excellent durability, soft sensation and luxurious appearance.

ACTIVE FOAM INN

SOFT AND DURABLE FOAM tested and suitable for quilted mattress treatment.

POLYESTER WAD

WHITE WAD with certified hypoallergenic properties from 100% polyester antibacterial fiber. It allows the internal ventilation of the mattress and removes moisture. It has excellent strength, elasticity and resilience.

CELL FOAM INN

SPECIALIZED FOAM with the latest technology, especially designed for quilting.

QUILTED HILL JUMP SYSTEM

QUILT PROCESS with JUMP system for extremely soft sensation, great rest and aesthetically perfect result achieved by state-of-the-art machines.

NATURAL LATEX LAYER

NATURAL LATEX LAYER. It is a natural milky liquid, derived from the extracts of the tropical tree. Its production process with the latest technology machines giving us a material of unique elasticity, flexibility and excellent restoration. It follows and perfectly adapts to the body shape ensuring distribution of the pressure exerted during sleep. In this way, it promotes proper blood circulation in the spine and the limbs. Its numerous holes, allow optimal ventilation of the mattress, preventing the development of germs and mites. A high-quality material, free of toxic and allergenic substances, which maintains its shape and comfort over time.

GRAND RELIEF FOAM LAYER

SPECIAL HIGH ELASTICITY FOAM which absorbs vibration and in combination with the MINI POCKET springs achieves maximum performance behavior of the mattress.

FLEXICOAT

A SPECIFIC FLEXIBLE AND RESISTANT 3D material, which works as an excellent raw material protection system, thus contributing to proper function and mattress comfort.

POCKET SPRINGS SCAN SYSTEM

THE ADVANCED SCAN SYSTEM TECHNOLOGY as well as the specially studied cylindrical shape of the independent springs, provide a high degree of support while their main advantage is the reduced sense of motion transfer. In addition, it ensures point support in any sleeping position you prefer, as well as noise avoidance. The rate of 260pcs per m² is maintained.

FRAME SUPPORT

STAINLESS STEEL FRAMEWORK SUPPORT ensures spring stabilization and mattress dimension.

UPPER BORDER SUPPORT SYSTEM

GRECO STROM through constant search and implementation of innovative technologies, has designed the new perimetric mattress support system, limiting recession in the process of the vertical pressure of its weight. It consists of increased density FOAM SUPPORT with special V-shaped notches along the sides and FOAM JUMP QUILTED SUPPORT process for the exterior mattress fabric.

SC FIBER FILTER

FILTER FROM STERILIZED COTTON FIBERS offers ideal insulation and support.

GRAND RELIEF FOAM INN

Elastic foam specially designed for quilt treatment.

POLYESTER WAD

FORESTEX FABRIC™

7 YEARS GUARANTEE



This product has been tested for durability and complies with the requirements of the European standard: EN 1957: 2012 & EN 1334: 1999

The inner materials are described in order of placement on the mattress. One side mattress. No turning required.

Bodytopia

04 RELIEF MATTRESS

7 YEARS GUARANTEE

PRODUCED IN
ALL DESIRE DIMENSIONS

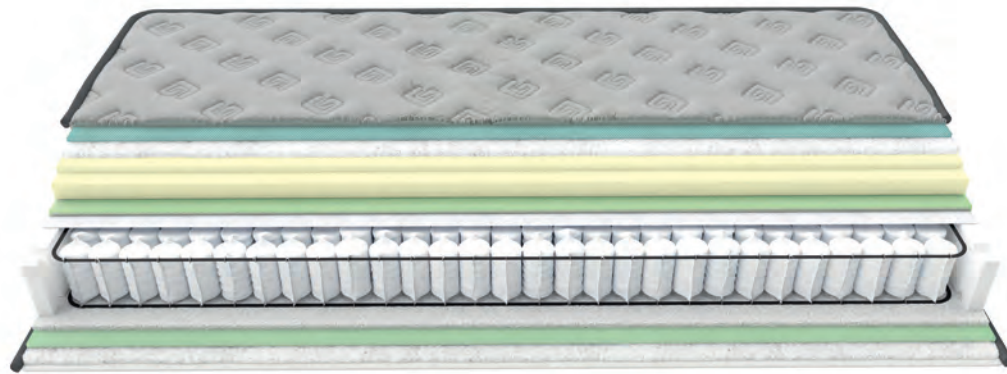
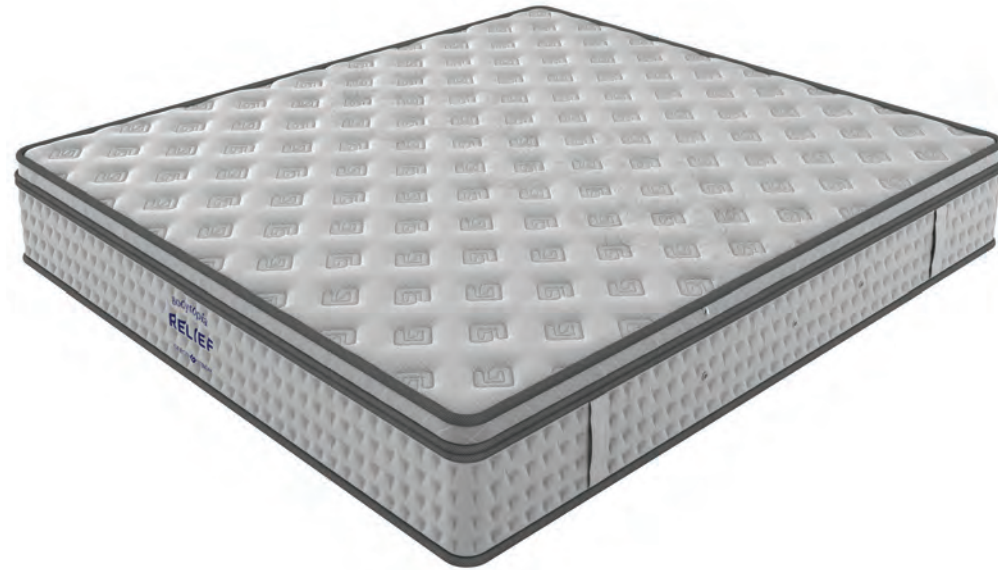
(+/-1 dimensional variation due to material nature)



Relief



Bodytopia



VENT & FRESH

Special open ventilation cells that ensure air circulation towards all directions in the mattress.

HANDLES

For easy rotation of the mattress.

ZIPPER

Allows the optical control of materials.

Mattress height 30cm (+/-1 dimensional variation due to material nature)

Relief

FORESTEX FABRIC™

FOR THE PRODUCTION OF FORESTEX FABRIC, we use yarn derived from a natural, renewable and biodegradable source, wood pulp. The special characteristic of this yarn is the cool and silky touch, a texture which gives a natural 'glow'. The FORESTEX fabric is highly breathable with very good moisture absorption characteristics and stands out for its thermoregulatory properties. In addition, it offers great comfort to movements while embracing harmoniously the body. The perfect combination of excellent durability, soft sensation and luxurious appearance.

MEMORY FOAM GEL INN

MEMORY FOAM enriched with thermosetting gel. From the most exciting discoveries in material technology memory foam. Provides optimal body support, evenly distributing weight, resulting in relief of pressure points and proper alignment of the spine. In addition, its open cellular structure material, allows air breathability.

POLYESTER WAD

WHITE WAD with certified hypoallergenic properties from 100% polyester antibacterial fiber. It allows the internal ventilation of the mattress and removes moisture. It has excellent strength, elasticity and resilience.

MEMORY FOAM SOFT INN

Elastic viscose (memory foam) of increased density, used in quilting and works according to body temperature. Minimizes pressure points, causing proper spinal and limb perfusion. This material creates "non-gravity" conditions, so it was used by NASA to relieve the pressure that astronauts had to deal with.

QUILTED HILL JUMP SYSTEM

QUILT PROCESS with JUMP system for extremely soft sensation, great rest and aesthetically perfect result achieved by state-of-the-art machines.

MEMORY FOAM SOFT LAYER

Elastic viscose layer (memory foam) of increased density which works according to body temperature. Minimizes pressure points, causing proper spinal and limb perfusion. This material creates "non-gravity" conditions, so it was used by NASA to relieve the pressure that astronauts had to deal with.

GRANDRELIEFFOAMLAYER

FOAM LAYER which allows internal ventilation and works perfectly with the MEMORY FOAM SOFT LAYER. The result is the maximum performance behavior of the mattress.

FLEXCOAT

A SPECIFIC FLEXIBLE AND RESISTANT 3D material, which works as an excellent raw material protection system, thus contributing to proper function and mattress comfort.

POCKET SPRINGS SCAN SYSTEM

THE ADVANCED SCAN SYSTEM TECHNOLOGY as well as the specially studied cylindrical shape of the independent springs, provide a high degree of support while their main advantage is the reduced sense of motion transfer. In addition, it ensures point support in any sleeping position you prefer, as well as noise avoidance. The rate of 260pcs per m² is maintained.

FRAMESUPPORT

STAINLESS STEEL FRAMEWORK SUPPORT ensures spring stabilization and mattress dimension.

UPPER BORDER SUPPORT SYSTEM

GRECO STROM through constant search and implementation of innovative technologies, has designed the new perimetric mattress support system, limiting recession in the process of the vertical pressure of its weight. It consists of increased density FOAM SUPPORT with special V-shaped notches along the sides and FOAM JUMP QUILTED SUPPORT process for the exterior mattress fabric.

SC FIBER FILTER

FILTER FROM STERILIZED COTTON FIBERS offers ideal insulation and support.

GRAND RELIEF FOAM INN

Elastic foam specially designed for quilt treatment.

POLYESTER WAD

FORESTEX FABRIC™

7 YEARS GUARANTEE



This product has been tested for durability and complies with the requirements of the European standard: EN 1957: 2012 & EN 1334: 1999

The inner materials are described in order of placement on the mattress. One side mattress. No turning required.

Bodytopia

05 SHAPE MATTRESS

7 YEARS GUARANTEE

PRODUCED IN
ALL DESIRE DIMENSIONS

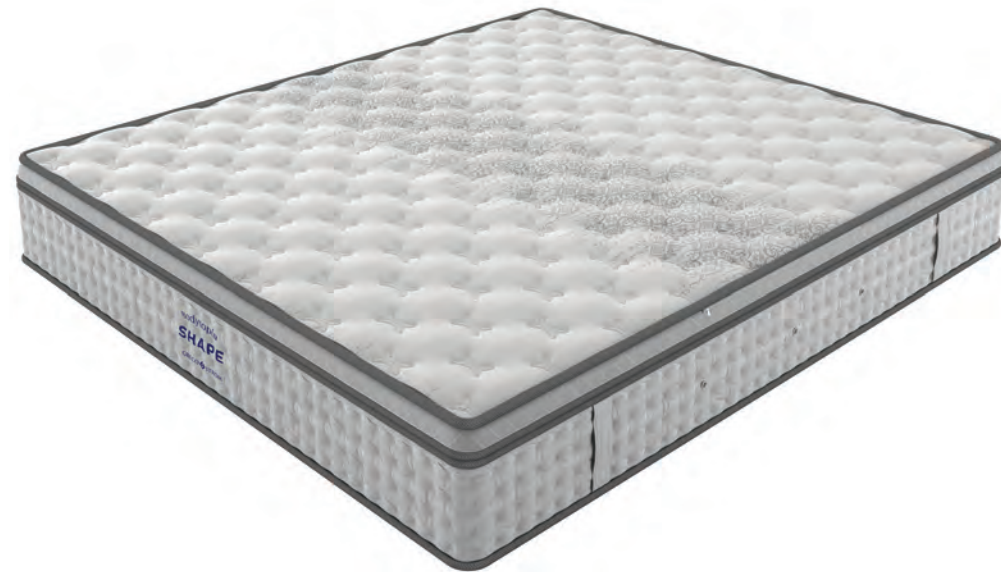
(+/-1 dimensional variation due to material nature)



Shape



Bodytopia



VENT & FRESH

Special open ventilation cells that ensure air circulation towards all directions in the mattress.

HANDLES

For easy rotation of the mattress.

ZIPPER

Allows the optical control of materials.

Mattress height 30cm (+/-1 dimensional variation due to material nature)

Shape

FORESTEX FABRIC™

FOR THE PRODUCTION OF FORESTEX FABRIC, we use yarn derived from a natural, renewable and biodegradable source, wood pulp. The special characteristic of this yarn is the cool and silky touch, a texture which gives a natural 'glow'. The FORESTEX fabric is highly breathable with very good moisture absorption characteristics and stands out for its thermoregulatory properties. In addition, it offers great comfort to movements while embracing harmoniously the body. The perfect combination of excellent durability, soft sensation and luxurious appearance.

BIO WAVE FOAM INN

SPECIAL CUT Foam with high elasticity. Thanks to its contemplated form, it absorbs vibration and adapts perfectly to the body shape. The weight is evenly distributed, providing a comfortable and healthy sleep. In addition, it protects against allergies and prevents the growth of bacteria.

POLYESTER WAD

WHITE WAD with certified hypoallergenic properties from 100% polyester antibacterial fiber. It allows the internal ventilation of the mattress and removes moisture. It has excellent strength, elasticity and resilience.

QUILTED HILL JUMP SYSTEM

QUILT PROCESS with JUMP system for extremely soft sensation, great rest and aesthetically perfect result achieved by state-of-the-art machines.

HR OPEN CELLS FOAM LAYER

HIGH LEVEL FOAM MATERIAL of the latest technology with thermoregulatory properties. Due to its open cellular structure, it allows the air to circulate inside the mattress. Also, its high density, ensures high elasticity, excellent restoration and durability even after years of use.

DOUBLE GRANT RELIEF FOAM LAYER

DOUBLE LAYER OF ERGONOMIC FOAM open structure and high flexibility for maximum performance of the mattress.

FLEXICOAT

A SPECIFIC FLEXIBLE AND RESISTANT 3D material, which works as an excellent raw material protection system, thus contributing to proper function and mattress comfort.

POCKETSPRINGS SCAN SYSTEM

THE ADVANCED SCAN SYSTEM TECHNOLOGY as well as the specially studied cylindrical shape of the independent springs, provide a high degree of support while their main advantage is the reduced sense of motion transfer. In addition, it ensures point support in any sleeping position you prefer, as well as noise avoidance. The rate of 260pcs per m² is maintained.

FRAME SUPPORT

STAINLESS STEEL FRAMEWORK SUPPORT ensures spring stabilization and mattress dimension.

UPPER BORDER SUPPORT SYSTEM

GRECO STROM through constant search and implementation of innovative technologies, has designed the new perimetric mattress support system, limiting recession in the process of the vertical pressure of its weight. It consists of increased density FOAM SUPPORT with special V-shaped notches along the sides and FOAM JUMP QUILTED SUPPORT process for the exterior mattress fabric.

SC FIBER FILTER

FILTER FROM STERILIZED COTTON FIBERS offers ideal insulation and support.

GRAND RELIEF FOAM INN

Elastic foam specially designed for quilt treatment.

POLYESTER WAD

FORESTEX FABRIC™

7 YEARS GUARANTEE



This product has been tested for durability and complies with the requirements of the European standard: EN 1957: 2012 & EN 1334: 1999

The inner materials are described in order of placement on the mattress. One side mattress. No turning required.

Bodytopia

06 SCHEME MATTRESS

7 YEARS GUARANTEE

PRODUCED IN
ALL DESIRE DIMENSIONS

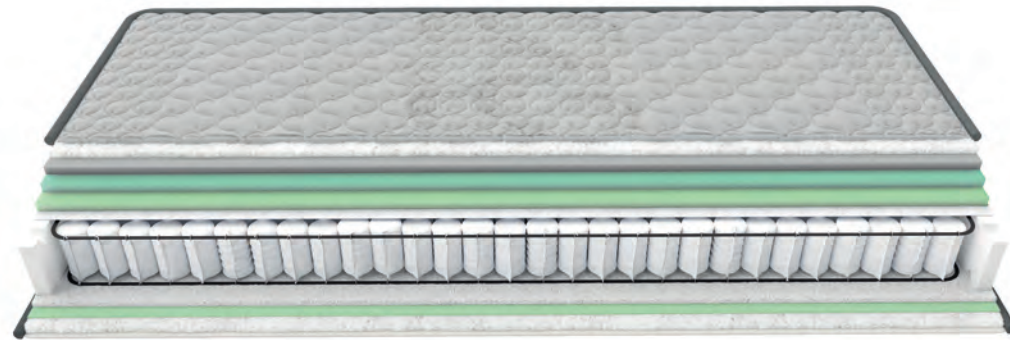
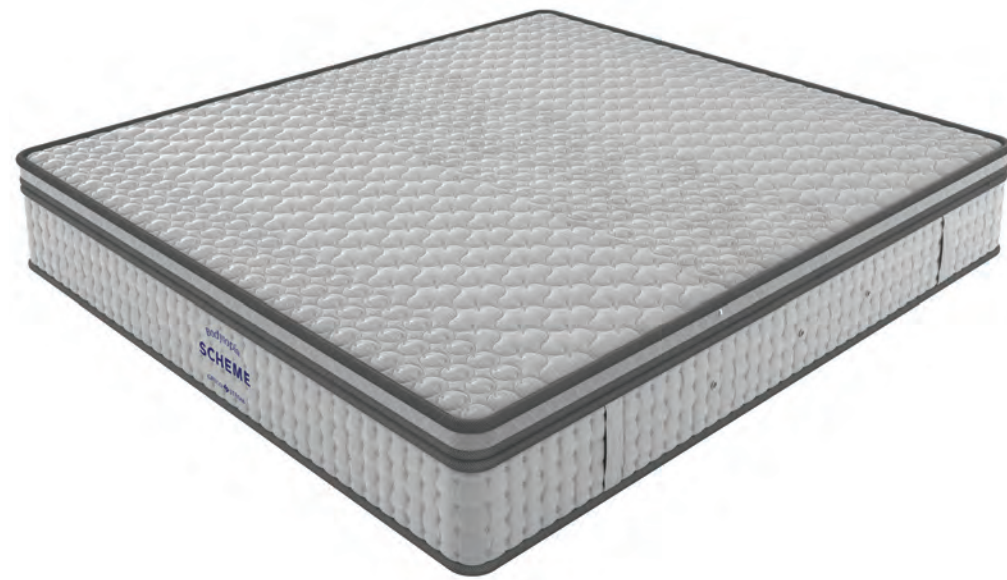
(+/-1 dimensional variation due to material nature)



Scheme



Bodytopia



VENT & FRESH

Special open ventilation cells that ensure air circulation towards all directions in the mattress.

HANDLES

For easy rotation of the mattress.

ZIPPER

Allows the optical control of materials.

Mattress height 26cm (+/-1 dimensional variation due to material nature)

Scheme

FORESTEX FABRIC™

FOR THE PRODUCTION OF FORESTEX FABRIC, we use yarn derived from a natural, renewable and biodegradable source, wood pulp. The special characteristic of this yarn is the cool and silky touch, a texture which gives a natural 'glow'. The FORESTEX fabric is highly breathable with very good moisture absorption characteristics and stands out for its thermoregulatory properties. In addition, it offers great comfort to movements while embracing harmoniously the body. The perfect combination of excellent durability, soft sensation and luxurious appearance.

POLYESTER WAD

WHITE WAD with certified hypoallergenic properties from 100% polyester antibacterial fiber. It allows the internal ventilation of the mattress and removes moisture. It has excellent strength, elasticity and resilience.

ACTIVE FOAM INN

SOFT AND DURABLE FOAM tested and suitable for quilted mattress treatment.

QUILTED HILL

QUILT PROCESS for extremely soft sensation, great rest and aesthetically perfect result achieved by state-of-the-art machines.

HR OPEN CELLS FOAM LAYER

HIGH LEVEL FOAM MATERIAL of the latest technology with thermoregulatory properties. Due to its open cellular structure, it allows the air to circulate inside the mattress. Also, its high density, ensures high elasticity, excellent restoration and durability even after years of use.

GRANT RELIEF FOAM LAYER

THE ABSOLUTE Foam Partner of HR OPEN CELLS FOAM LAYER. By combining these innovative materials, we succeed maximum performance behavior of the mattress.

FLEXCOAT

A SPECIFIC FLEXIBLE AND RESISTANT 3D material, which works as an excellent raw material protection system, thus contributing to proper function and mattress comfort.

POCKET SPRINGS SCAN SYSTEM

THE ADVANCED SCAN SYSTEM TECHNOLOGY as well as the specially studied cylindrical shape of the independent springs, provide a high degree of support while their main advantage is the reduced sense of motion transfer. In addition, it ensures point support in any sleeping position you prefer, as well as noise avoidance. The rate of 260pcs per m² is maintained.

FRAME SUPPORT

STAINLESS STEEL FRAMEWORK SUPPORT ensures spring stabilization and mattress dimension.

UPPER BORDER SUPPORT SYSTEM

GRECO STROM through constant search and implementation of innovative technologies, has designed the new perimetric mattress support system, limiting recession in the process of the vertical pressure of its weight. It consists of increased density FOAM SUPPORT with special V-shaped notches along the sides and FOAM JUMP QUILTED SUPPORT process for the exterior mattress fabric.

SC FIBER FILTER

FILTER FROM STERILIZED COTTON FIBERS offers ideal insulation and support.

GRAND RELIEF FOAM INN

Elastic foam specially designed for quilt treatment.

POLYESTER WAD

FORESTEX FABRIC™

7 YEARS GUARANTEE



This product has been tested for durability and complies with the requirements of the European standard: EN 1957: 2012 & EN 1334: 1999

The inner materials are described in order of placement on the mattress. One side mattress. No turning required.

Bodytopia

07 STRUCTURE MATTRESS

5 YEARS GUARANTEE

PRODUCED IN
ALL DESIRE DIMENSIONS

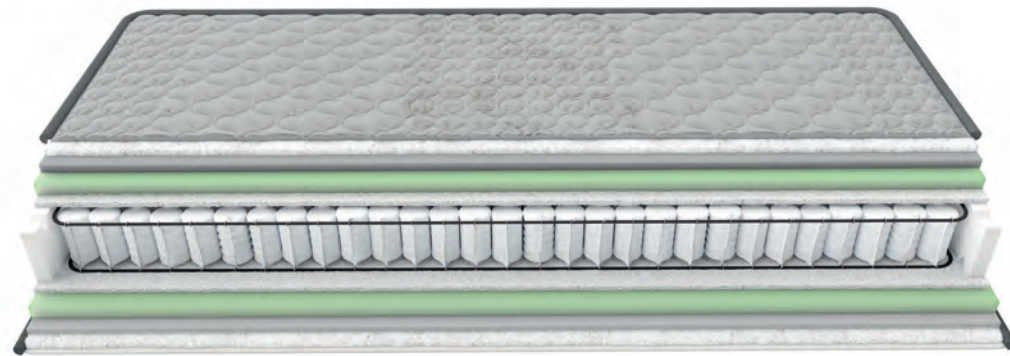
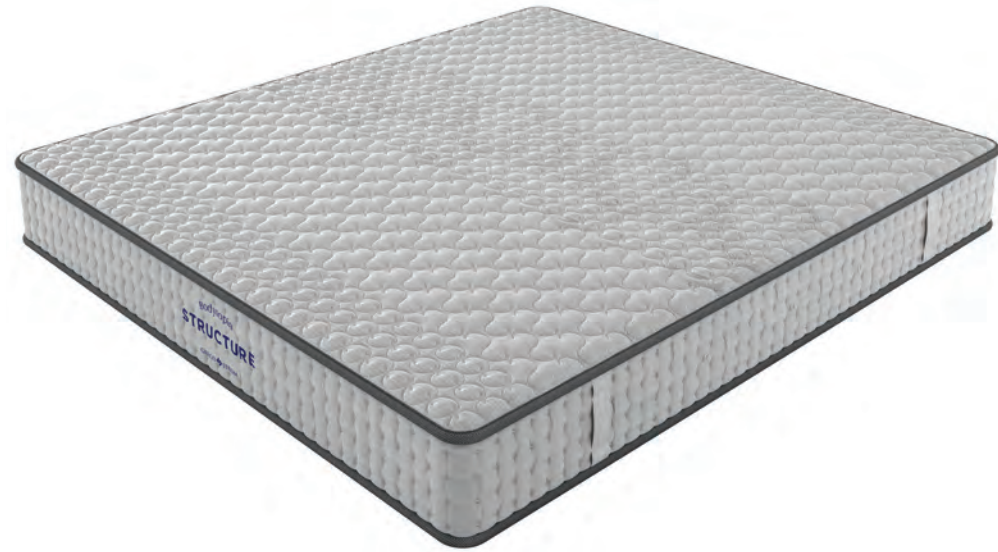
(+/-1 dimensional variation due to material nature)



Structure



Bodytopia



VENT & FRESH

Special open ventilation cells that ensure air circulation towards all directions in the mattress.

HANDLES

For easy rotation of the mattress.

ZIPPER

Allows the optical control of materials.

Mattress height 26cm (+/-1 dimensional variation due to material nature)

Structure

SC FIBER FILTER

SOFT AND DURABLE FOAM tested and suitable for quilted mattress treatment.

FORESTEX FABRIC™

FOR THE PRODUCTION OF FORESTEX FABRIC, we use yarn derived from a natural, renewable and biodegradable source, wood pulp. The special characteristic of this yarn is the cool and silky touch, a texture which gives a natural 'glow'. The FORESTEX fabric is highly breathable with very good moisture absorption characteristics and stands out for its thermoregulatory properties. In addition, it offers great comfort to movements while embracing harmoniously the body. The perfect combination of excellent durability, soft sensation and luxurious appearance.

POLYESTER WAD

WHITE WAD with certified hypoallergenic properties from 100% polyester antibacterial fiber. It allows the internal ventilation of the mattress and removes moisture. It has excellent strength, elasticity and resilience.

ACTIVEFOAMINN

SOFT AND DURABLE FOAM tested and suitable for quilted mattress treatment.

QUILTED HILL

QUILT PROCESS for extremely soft sensation, great rest and aesthetically perfect result achieved by state-of-the-art machines.

GRANT RELIEF FOAM LAYER

FOAM LAYER which allows internal ventilation and works perfectly with the ACTIVE FOAM INN. The result is the maximum performance behavior of the mattress.

POCKET SPRINGS SCAN SYSTEM

THE ADVANCED SCAN SYSTEM TECHNOLOGY as well as the specially studied cylindrical shape of the independent springs, provide a high degree of support while their main advantage is the reduced sense of motion transfer. In addition, it ensures point support in any sleeping position you prefer, as well as noise avoidance. The rate of 260pcs per m² is maintained.

FRAME SUPPORT

STAINLESS STEEL FRAMEWORK SUPPORT ensures spring stabilization and mattress dimension.

UPPER BORDER SUPPORT SYSTEM

GRECO STROM through constant search and implementation of innovative technologies, has designed the new perimetric mattress support system, limiting recession in the process of the vertical pressure of its weight. It consists of increased density FOAM SUPPORT with special V-shaped notches along the sides and FOAM JUMP QUILTED SUPPORT process for the exterior mattress fabric.

5 YEARS GUARANTEE



This product has been tested for durability and complies with the requirements of the European standard: EN 1957: 2012 & EN 1334: 1999

Insert materials are described in the order they are placed in the mattress for each two sides

Bodytopia

08 PROFILE MATTRESS

5 YEARS GUARANTEE

PRODUCED IN
ALL DESIRE DIMENSIONS

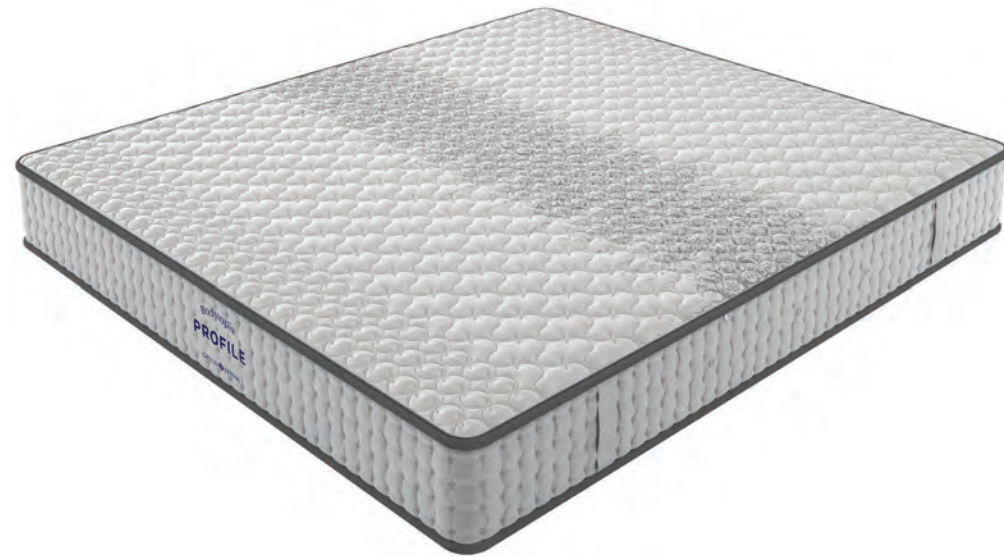
(+/-1 dimensional variation due to material nature)



Profile



Bodytopia



VENT & FRESH

Special open ventilation cells that ensure air circulation towards all directions in the mattress.

HANDLES

For easy rotation of the mattress.

ZIPPER

Allows the optical control of materials.

Mattress height 26cm (+/-1 dimensional variation due to material nature)

Profile

FORESTEX FABRIC™

FOR THE PRODUCTION OF FORESTEX FABRIC, we use yarn derived from a natural, renewable and biodegradable source, wood pulp. The special characteristic of this yarn is the cool and silky touch, a texture which gives a natural 'glow'. The FORESTEX fabric is highly breathable with very good moisture absorption characteristics and stands out for its thermoregulatory properties. In addition, it offers great comfort to movements while embracing harmoniously the body. The perfect combination of excellent durability, soft sensation and luxurious appearance.

POLYESTER WAD

WHITE WAD with certified hypoallergenic properties from 100% polyester antibacterial fiber. It allows the internal ventilation of the mattress and removes moisture. It has excellent strength, elasticity and resilience.

ACTIVE FOAM INN

SOFT AND DURABLE FOAM tested and suitable for quilted mattress treatment.

QUILTED HILL

QUILT PROCESS for extremely soft sensation, great rest and aesthetically perfect result achieved by state-of-the-art machines.

INTEX FOAM LAYER

ITS EXCEPTIONAL FLEXIBILITY allows it to evenly distribute weight, which prevents the creation of pressure points. In addition, it is breathable and helps maintain the ideal sleeping temperature.

POCKETSPRINGS SCAN SYSTEM

THE ADVANCED SCAN SYSTEM TECHNOLOGY as well as the specially studied cylindrical shape of the independent springs, provide a high degree of support while their main advantage is the reduced sense of motion transfer. In addition, it ensures point support in any sleeping position you prefer, as well as noise avoidance. The rate of 260pcs per m² is maintained.

FRAMESUPPORT

STAINLESS STEEL FRAMEWORK SUPPORT ensures spring stabilization and mattress dimension.

UPPERBORDERSUPPORTSYSTEM

GRECO STROM through constant search and implementation of innovative technologies, has designed the new perimetric mattress support system, limiting recession in the process of the vertical pressure of its weight. It consists of increased density FOAM SUPPORT with special V-shaped notches along the sides and FOAM JUMP QUILTED SUPPORT process for the exterior mattress fabric.

5 YEARS GUARANTEE

This product has been tested for durability and complies with the requirements of the European standard:
EN 1957: 2012 & EN 1334: 1999



Insert materials are described in the order they are placed in the mattress for each two sides

ATHENS MATTESSES LTD "GRECO STROM" a purely Greek company, has been involved in the manufacturing of mattresses, beds and sleep products for over 56 years while successfully operating in **hotel, medical, marine** and **hospital equipment**, as well as with absolute respect and sensitivity in **baby sleep products**.

For further information visit our homepage!

End of Makrigiannis str. | Mandra Attica, 19600 Athens - Greece | T. +30 210 5552000 | E. sales@grecostrom.gr

grecostrom.gr

shop.grecostrom.gr