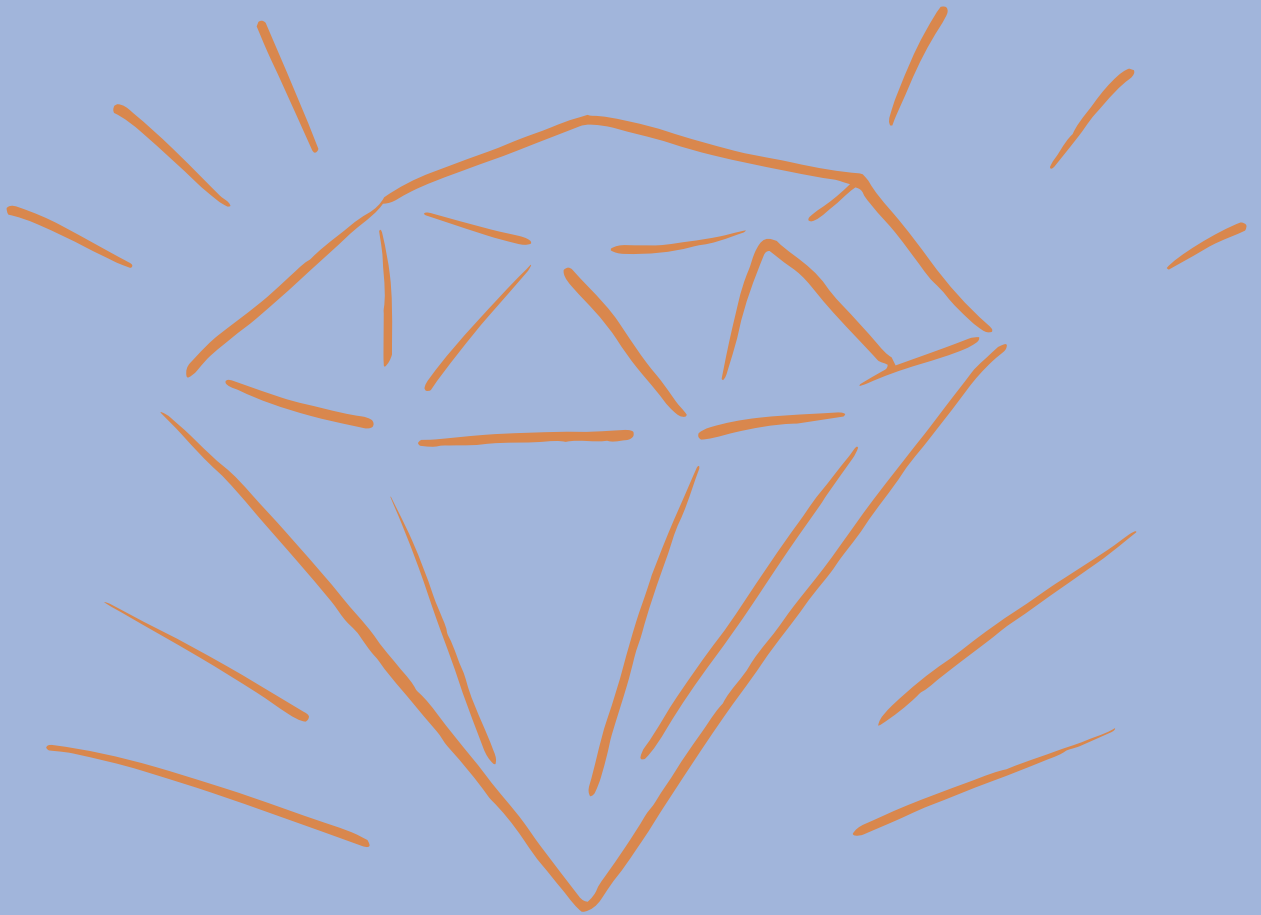


# Lithos

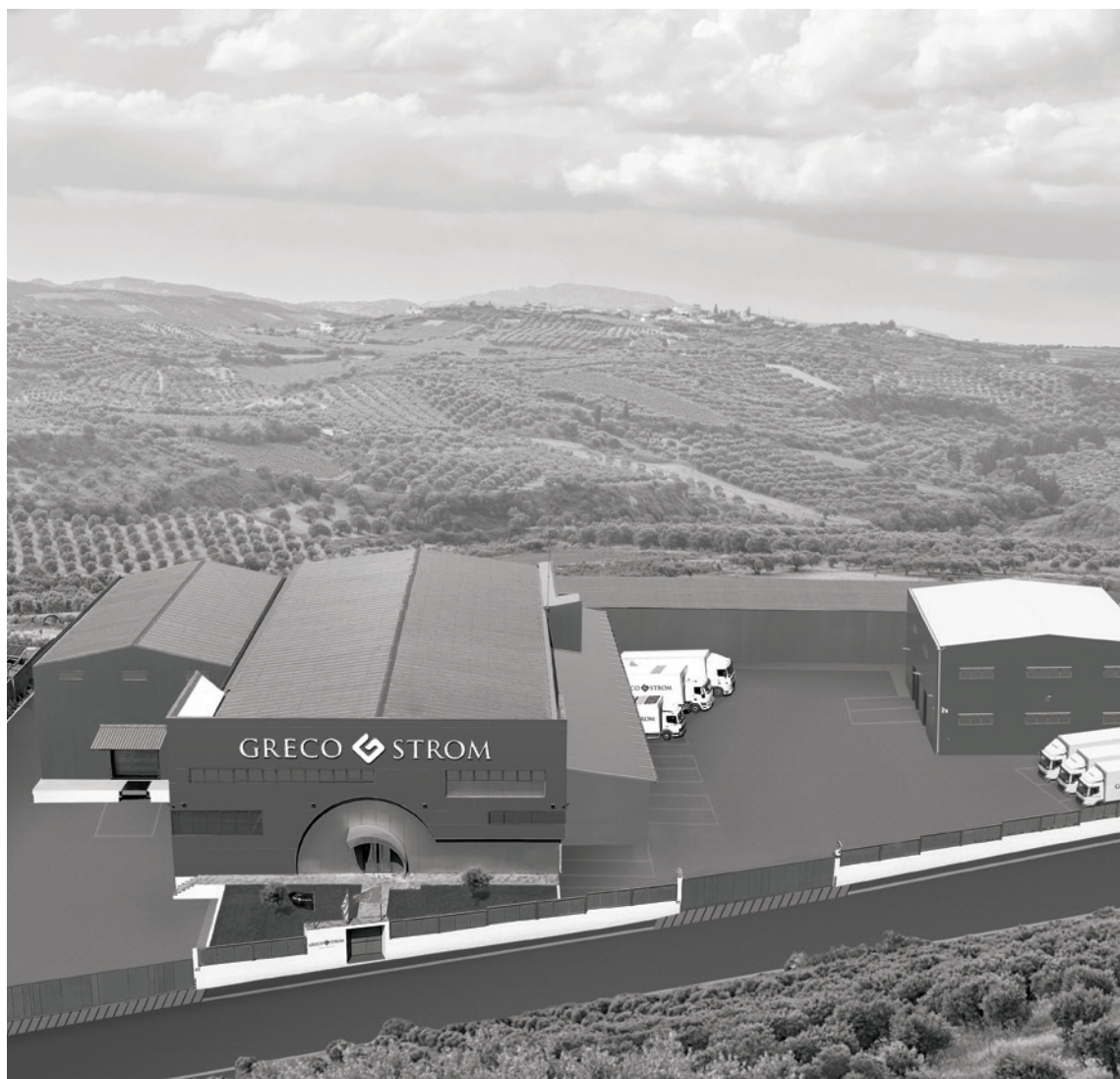




# Lithos

LITHOS PREMIUM MATTRESSES COLLECTION

# Bedtime



**58 YEARS OF RESEARCH  
& INNOVATION**

# Stories



Indulge in the confidence inspired by a leader. With dedication and perseverance in quality for 58 years, **GRECO STROM** has managed to become the number 1 infant/baby mattress manufacturer in Greece and to be at the top of sleep products for every age. The secret of success is not a “secret”. It’s a tough job to offer you the finest materials, the richest choices and the most sophisticated products, while adhering to the rigorous international standards for mattress production. The recognition and trust of those who have chosen **GRECO STROM**, have given us a leading role in the sleep product market. Perhaps because we were not only able to offer them what they asked for, but also to overcome their expectations.

# Certifications



GRECO STROM is particularly proud that all certifications have been received by the international certification institutions Bureau Veritas, LRQA Business Assurance & Swiss Approval International. These are institutions that check with frequent inspections the proper implementation, maintenance and continuous upgrading of the quality systems.



# GRECO STROM

**DESIGN, PRODUCTION, QUALITY CONTROL  
AND DISTRIBUTION OF THE COMPANY'S PRODUCTS  
HAVE BEEN CERTIFIED ACCORDING TO:**



## SWISS APPROVAL INTERNATIONAL

THE GRECO STROM MATTRESSES have been tested and certified by the Swiss Approval International, as compliance with applicable European directives and regulations. The products comply with the requirements of the European Standard: EN 16890:2017. Children's furniture – Mattresses for cots and cribs – Safety requirements and test methods.



## ISO 9001 INTERNATIONAL QUALITY MANAGEMENT SYSTEM

ISO 9001 is an internationally recognized standard for quality assurance and quality management for businesses.



## ISO 14001 INTERNATIONAL ENVIRONMENTAL MANAGEMENT SYSTEM

ISO 14001 is an internationally recognized standard for environmental management by businesses. It provides guidelines and required checkpoints that must be applied to any activities having an impact on the environment.



## ISO 13485 INTERNATIONAL QUALITY ASSURANCE SYSTEM FOR MEDICAL DEVICES

THE ISO 13485 standard establishes the requirements of the quality assurance system for companies involved in designing, producing, trading, installing and providing technical support for medical devices and products.



## MARINE MATTRESSES APPROVAL BY MIRTEC SA (MATERIALS INDUSTRIAL RESEARCH & TECHNOLOGY CENTER)

UPGRADING QUALITY PRODUCTS that are required to meet specifications and are suitable to equip ships, yachts, hotels and general spaces and it is considered necessary to use mattresses with particular fire resistance, therefore GRECO STROM designs and produces a new series of mattresses that meet the requirements as outlined in Directive 2014/90 EU and Regulation (EU) 2020/1170 for MED / 3.21 bedding product group.

- SOLAS 74 Reg. II-2/3, Reg. II-2/9 & Reg. X / 3 &
- IMO Res. MSC. 307 (88) – (2010 FTP Code) Annex 1, Part 9



## ALTERNATIVE PACKAGING MANAGEMENT

WITH ABSOLUTE RESPECT TO THE ENVIRONMENT, GRECO STROM belongs to the innovators of the alternative packaging management system in collaboration with the Greek Recycling Recovery Company.

# History

**SINCE 1964, OUR DEDICATION ON QUALITY HAS BECOME A HABIT, A WAY OF LIFE, WORK AND CREATION.**



## 1964

THE COMPANY IS FOUNDED BY MR. FOTIS GKOTSPOULOS and is active in the manufacture of handmade cotton mattresses.

## 1976

PURCHASE OF 5,000 m<sup>2</sup> PRIVATELY OWNED AREA and construction of factory building of 1,500 m<sup>2</sup> in Mandra, Attica.

## 1980

PURCHASE OF MACHINERY EQUIPMENT and production of mattresses with springs.

## 1986

MR. MARIOS GKOTSPOULOS son of the founder enters the company as a partner.

## 1991

GRECO STROM EXPANDS after it extends its factory building to 3,000 m<sup>2</sup>.

## 1997

MR. CHRIS GKOTSPOULOS son of the founder enters the company as a partner.

## 1998

OUR COMPANY EXTENDS ITS ACTIVITY by studying, designing and producing baby mattresses, based on the most stringent international standards.

## 2000

COMPANY CERTIFICATION based on the International Quality Management System ISO 9001.

## 2003

INVESTMENTS ARE MADE with upscale and modern mechanical equipment and the company proceeds to innovative design and production of box mattresses.

## 2004

- MATTRESS SUPPLY ASSIGNMENT for the OLYMPIC GAMES.

- CERTIFICATION OF THE COMPANY based on the International Environmental Management System ISO 14001.

## 2005

- EXPORT ACTIVITY in Cyprus.

- INCORPORATION OF THE COMPANY as a member of ISPA (International Sleep Products Association).

## 2006

- ASSIGNMENT FOR SUBMARINES AND SHIPS OF THE NAVY with mattresses certified according to specifications (international Maritime Organization)

- AWARD OF THE ECO LABEL under the Register number EL / 014/0.

## 2007

- OUR MATTRESS STRENGTH IS VERIFIED by the test EN 1957 in the AIDIMA specialized laboratory in Spain.

- EXPORT ACTIVITY in Balkan countries.

## 2008

EXPORT ACTIVITY in Russia.

## 2012

- CERTIFICATION OF THE COMPANY based on the ISO 13485 International Medical Product Quality System.

- STUDY, DESIGN AND PRODUCTION OF HOSPITAL BEDS with CE certification and registration in the Register Manufacturers of Category I Medical Devices from EOF.

## 2013

GRECO STROM CONTINUES TO EXPAND after it extends its factory building to 6,000 m<sup>2</sup>.



# GRECO STROM

## 2015

GRECO STROM INNOVATES by designing and producing mattresses that go beyond expectations. The advantages of a handmade mattress structure are complied with transcendental technological development, offering the new generation of LITHOS mattresses.

## 2017

INVESTING in pioneering innovative mechanical equipment.

## 2018

- THE BABY MATTRESSES OF GRECO STROM are tested and certified by the Swiss Certification for Safety and Product Quality Swiss Approval International and meet the requirements of the European Standard: EN 16890: 2017.

- EXTENSION of privately-owned building facilities to 16,000 m².

## 2019

- UPGRADING QUALITY PRODUCTS that are required to meet specifications and are suitable to equip ships, yachts, hotels and general spaces and it is considered necessary to use mattresses with particular fire resistance, therefore GRECO STROM designs and produces a new series of mattresses that meet the requirements as outlined in EU Regulation 2017/306 for MED / 3.21 bedding product group.

– SOLAS 74 Reg.II-2/3, Reg.II-2/9 & Reg. X/3 &

– IMO Res. MSC. 307(88)–(2010 FTP Code) Annex 1, Part 9.

- EXPORT ACTIVITY in Czech Republic, Italy and Romania.

- INVESTMENTS ARE MADE with upscale and modern mechanical equipment

- GRECO STROM WAS AWARDED the "Diamonds of the Greek Economy 2019" as one of the diamonds of the Greek economy!

## 2020

- GRECO STROM DRIVEN BY INSPIRATIONAL AND CREATIVE PRODUCTION HAS CREATED THE NEW BODYTOPIA MATTRESS COLLECTION AND THE GRAND COLLECTION MATTRESSES FOR HOTEL EQUIPMENT. Mattresses that respond to the desired to rejuvenate and relax within the most personal eight hours of the day. Positive emotions that accompany the experience of good sleep. Moments of dreaming, reminiscence, rest, moments of true psychosomatic uplift and satisfaction.

- Construction of an independent bed production unit 1000 m².

- Extension of privately owned building by 500 m².

## 2021

- GRECO STROM creates online store [shop.grecostrom.gr](http://shop.grecostrom.gr), for direct purchases and distribution of household equipment products as well as baby and children's sleep products.

- GRECO STROM WAS AWARDED the "Diamonds of the Greek Economy 2021" as one of the diamonds of the Greek economy!

## THE PRECIOUS COLLECTION



For GRECO STROM, diligence, perfection and refinement are synonymous with passionate attention to detail. The excellent LITHOS mattresses series was born to offer you unique moments of daily relaxation. Jubilee, Jonker, Excelsior, Trillion, Emerald... Five new mattresses available for you, specially designed to activate every cell of your body and travel you to the realm of dream.

GRECO STROM's vision was an innovative design, based on uniqueness and innovation that combined tradition with technological modernity.

# Collection

This new model version goes beyond the current trends, leading to a new dimension of sleep, where the benefits of a handmade mattress are blended with the transcendent technological evolution.



# Lithos



## LITHOS MATTRESSES



JUBILEE PAGES 12-15

JONKER PAGES 16-19

EXCELSIOR PAGES 20-23

TRILLION PAGES 24-27

EMERALD PAGES 28-31

## 01 JUBILEE MATTRESS

10 YEARS WARRANTY



Incredible adaptability, unsurpassed luxury  
By choosing the JUBILEE mattress, you enter  
the wonderful world of luxury anatomy.  
The 7 different support zones combined with  
the increased number of independent springs,  
its unique elasticity, flexibility and excellent  
restoration, along with the perfect fit to the body  
contour, ensure a sense of wellness creating  
the best conditions for hygiene and well-being.  
Activate your senses by enjoying the luxury of  
comfort to the maximum!

# Jubilee



PRODUCED IN  
ALL DESIRE DIMENSIONS

(+/-1 dimensional variation due to material nature)

# Lithos

## PURE VISCOSE FIRE RETARDANT FABRIC

HUMAN SKIN IS OUR NATURAL CONNECTION TO THE ENVIRONMENT. It loves to touch natural materials which have a positive effect on the body, creating the ideal conditions for climate and temperature. Inside the heart of the tree trunk, cellulose is found, a pulp of the structural polysaccharide. After special treatment, it offers us unique gloss fibers from which high quality fabric is produced. Viscose is a very durable fabric which offers great comfort during movements. Also, it has a sensation of embracing the body harmoniously so it is highly requested in textile production. The PURE VISCOSE fabric has excellent heat-regulating properties. Indeed, its structure "traps" the air, providing a natural insulating environment, as it can absorb up to 40% of moisture while reducing static electricity.

## FIBER WAVE LANA

ECO-WOOL LAYER. It contains no chemical resins and glues, it is fully recyclable and hypoallergenic. A exclusively patented product technology is its structure, as the fibers are arranged in sinusoidal order, thus forming a set of waves having a horizontal arrangement. This ensures a great flexibility, excellent restoration and durability, even under high compression conditions.

## DOUBLE HIGH-RESILIENCE FOAM HR

THE STATE-OF-THE-ART HIGH QUALITY FOAM with its open cellular structure allows breathing inside the mattress and at the same time because of its high density ensures maximum performance. Its behavior provides high elasticity, excellent recovery and durability even after years of use. A double layer of material is used on each side of the mattress.

## QUILTED 5M ARTWORK

GRECO STROM INNOVATES IN THE DESIGN AND QUALITY OF QUILTING. It includes in its production, modern technology machines capable of operating precisely a lot of materials together. In this way the advantages of LITHOS handmade mattresses are combined with the technological evolution, resulting in extremely soft sensation, great comfort and aesthetically perfect result.

## LATEX LAYER COMFORT PLUS

LATEX IS A NATURAL MILKY LIQUID, derived from the extracts of the tropical tree *Hevea brasiliensis* which grows frequently in Southeast Asia. Its production process with the latest technology machines giving us a material of unique elasticity, flexibility and excellent restoration. It follows and perfectly adapts to the body shape ensuring distribution of the pressure exerted during sleep. In this way, it promotes proper blood circulation in the spine and the limbs. Its numerous holes, allow optimal ventilation of the mattress, preventing the development of germs and mites. A high-quality material, free of toxic and allergenic substances, which maintains its shape and comfort over time.

## 7 ZONE MICRO POCKET SPRINGS 2000S

THE NEW UNIT OF INDIVIDUAL SPRINGS TYPE 7 ZONE MICRO POCKET SPRINGS 2000S offers a high level of support and comfort. Each spring is hosted separately in fabric pockets allowing each spring unit to react completely independently. The special thickness of the wire gives maximum resistance to this innovative spring unit as it is adjustable for pressure distribution and ergonomic adjustment to body weight is ensured. In addition, the small diameter of each micro pocket spring results in the maximum number of springs per m<sup>2</sup>, thus providing the highest degree of support. The barrel shape of the springs ensures noise avoidance. The rate of 260 pcs per m<sup>2</sup> is maintained.

## FRAME SUPPORT

STAINLESS STEEL PERIMETER FRAME ensuring spring stabilization and the mattress dimension.

## LATEX EXTRA BORDER SUPPORT

LATEX SUPER ENHANCED DENSITY MATERIAL for border support of the mattress. Its numerous holes allow for optimum ventilation of the mattress, preventing the growth of microbes, fungi and mites, thus ensuring the best hygiene conditions. GRECO STROM guarantees the use of the best latex quality selected from controlled plantations and is strictly tested before and during the production process.

## 10 YEARS WARRANTY

### VENT & FRESH

Special open ventilation cells that ensure air circulation towards all directions in the mattress

### HANDLES

For easy rotation of the mattress

### ZIPPER

Allows the optical control of materials

## JUBILEE DIMENSIONS & PRICES

All values above refer to mattresses with length 2m. Mattress dimensions over 2 meters are charged with € 32 per cm.

Dimensions (cm)	UP TO 90	91-100	101-110	111-120	121-130	131-140	141-150	151-160	161-170	171-180	181-190	191-200
Price (€)	1591	1798	1984	2170	2360	2550	2766	2977	3147	3316	3532	3748

Prices include VAT. Mattress height 30cm (+/-1 dimensional variation due to material nature).

Insert materials are described in the order they are placed in the mattress for each two sides.



# Jubilee



02 JONKER MATTRESS

10 YEARS WARRANTY



The definition of anatomy. Indulge in the softness and incomparable anatomy of the JONKER mattress. Thanks to its unique technology and combination of different types of independent springs, it offers maximum body, while at the same time its luxurious design, challenges you to experience true relaxation and wellness!

# Jonker



PRODUCED IN  
ALL DESIRE DIMENSIONS

(+/-1 dimensional variation due to material nature)

# Lithos

## PURE VISCOSE FIRE RETARDANT FABRIC

HUMAN SKIN is our natural connection to the environment. It loves to touch natural materials which have a positive effect on the body, creating the ideal conditions for climate and temperature. Inside the heart of the tree trunk, cellulose is found, a pulp of the structural polysaccharide. After special treatment, it offers us unique gloss fibers from which high quality fabric is produced. Viscose is a very durable fabric which offers great comfort during movements. Also, it has a sensation of embracing the body harmoniously so it is highly requested in textile production. The PURE VISCOSE fabric has excellent heat-regulating properties. Indeed, its structure "traps" the air, providing a natural insulating environment, as it can absorb up to 40% of moisture while reducing static electricity.

## FIBER WAVE LANA

ECO-WOOL LAYER. It contains no chemical resins and glues, it is fully recyclable and hypoallergenic. A exclusively patented product technology is its structure, as the fibers are arranged in sinusoidal order, thus forming a set of waves having a horizontal arrangement. This ensures a great flexibility, excellent restoration and durability, even under high compression conditions.

## DOUBLE HIGH-RESILIENCE FOAM HR

THE STATE-OF-THE-ART HIGH QUALITY FOAM with its open cellular structure allows breathing inside the mattress and at the same time because of its high density ensures maximum performance. Its behavior provides high elasticity, excellent recovery and durability even after years of use. A double layer of material is used on each side of the mattress.

## QUILTED 5M ARTWORK

GRECO STROM INNOVATES IN THE DESIGN AND QUALITY OF QUILTING. It includes in its production, modern technology machines capable of operating precisely a lot of materials together. In this way the advantages of LITHOS handmade mattresses are combined with the technological evolution, resulting in extremely soft sensation, great comfort and aesthetically perfect result.

## 7 MULTI-ZONE LATEX LAYER

THANKS TO ITS SEVEN DIFFERENT SUPPORT ZONES it ensures an evenly distribution of body pressure during sleep. In this way, it promotes proper blood circulation in the spine and the limbs. Its numerous holes allow for optimum ventilation of the mattress, preventing the growth of microbes, fungi and mites, thus ensuring the best hygiene conditions.

## TABLET MICRO POCKET SPRINGS 1000S

THE NEW UNIT OF INDIVIDUAL SPRINGS TYPE TABLET MICRO POCKET SPRINGS 1000S offers a high level of support and comfort. Each spring is hosted separately in fabric pockets allowing each spring unit to react completely independently and ensures noise avoidance. In combination with the independent spring unit 7 ZONE MICRO POCKET SPRINGS 1000S additional resistance is provided when more pressure is exerted, therefore increased support is provided when and where needed, thus contributing to the maximum anatomical performance of the layer. In addition, the small diameter of each micro pocket spring results in the maximum number of springs per m<sup>2</sup>, thus providing the highest degree of support. The rate of 500 pcs per m<sup>2</sup> is maintained.

## 7 ZONE MICRO POCKET SPRING UNIT 1000S

INDEPENDENT SPRING UNIT TYPE 7 ZONE MICRO POCKET SPRING 1000S that are hosted separately in fabric pockets. The 7 different support zones allow the individual elasticity of each spring and provide a high degree of support. This regulates the distribution of pressure and ensures ergonomic adjustment to body weight by evolving anatomy to the highest degree. The rate of 500 pcs per m<sup>2</sup> is maintained.

## FRAME SUPPORT

STAINLESS STEEL PERIMETER FRAME ensuring spring stabilization and the mattress dimension.

## "V" FOAM EXTRA SUPPORT

HIGH DENSITY FOAM for boarder support of the mattress. In addition, with special notches V-shaped along the length sides and with its open cellular structure, it ensures excellent ventilation of the mattress.

## 10 YEARS WARRANTY

### VENT & FRESH

Special open ventilation cells that ensure air circulation towards all directions in the mattress

### HANDLES

For easy rotation of the mattress

### ZIPPER

Allows the optical control of materials

## JONKER DIMENSIONS & PRICES

All values above refer to mattresses with length 2m. Mattress dimensions over 2 meters are charged with € 32 per cm.

Dimensions (cm)	UP TO 90	91-100	101-110	111-120	121-130	131-140	141-150	151-160	161-170	171-180	181-190	191-200
Price (€)	1075	1180	1291	1399	1504	1608	1703	1792	1917	2052	2175	2299

Prices include VAT. Mattress height 30cm (+/-1 dimensional variation due to material nature).

Insert materials are described in the order they are placed in the mattress for each two sides.

# Jonker



## 03 EXCELSIOR MATTRESS

10 YEARS WARRANTY



Comfort of a new era with EXCELSIOR mattress! Take advantage of innovative and specialized materials of latest technology with unique possibilities of stress relief and ergonomic body weight adjustment. Feel the maximum anatomical efficiency of the EXCELSIOR mattress. Experience unique moments, premium relaxation and wonderful design!

# Excelsior



PRODUCED IN  
ALL DESIRE DIMENSIONS

(+/-1 dimensional variation due to material nature)

# Lithos

## PURE VISCOSE FIRE RETARDANT FABRIC

HUMAN SKIN is our natural connection to the environment. It loves to touch natural materials which have a positive effect on the body, creating the ideal conditions for climate and temperature. Inside the heart of the tree trunk, cellulose is found, a pulp of the structural polysaccharide. After special treatment, it offers us unique gloss fibers from which high quality fabric is produced. Viscose is a very durable fabric which offers great comfort during movements. Also, it has a sensation of embracing the body harmoniously so it is highly requested in textile production. The PURE VISCOSE fabric has excellent heat-regulating properties. Indeed, its structure "traps" the air, providing a natural insulating environment, as it can absorb up to 40% of moisture while reducing static electricity.

## FIBER WAVE LANA

ECO-WOOL LAYER. It contains no chemical resins and glues, it is fully recyclable and hypoallergenic. A exclusively patented product technology is its structure, as the fibers are arranged in sinusoidal order, thus forming a set of waves having a horizontal arrangement. This ensures a great flexibility, excellent restoration and durability, even under high compression conditions.

## DOUBLE SPACE VISCO ELASTIC SOFT

DOUBLE LAYER OF SPECIALIZED QUILTED FOAM MATERIAL. Works according to body temperature, while contributes to maximum anatomical performance. This product was originally used by NASA in laboratory studies.

## QUILTED 5M ARTWORK

GRECO STROM INNOVATES IN THE DESIGN AND QUALITY OF QUILTING. It includes in its production, modern technology machines capable of operating precisely a lot of materials together. In this way the advantages of LITHOS handmade mattresses are combined with the technological evolution, resulting in extremely soft sensation, great comfort and aesthetically perfect result.

## SPACE VISCO ELASTIC FIRM LAYER

HIGH ELASTIC VISCOSE (MEMORY FOAM) used as an inner layer which works according to body temperature and minimises pressure points, causing proper blood circulation in the spine and limbs. This material creates "non-gravity" conditions, so it was used by NASA to relieve the pressure that astronauts had to face.

## 7 ZONE POCKET SPRINGS 500S

UNIT OF INDEPENDENT SPRINGS HOSTED SEPARATELY IN CLOTH POUCHES. The 7 different support zones allow individual elasticity of each spring and provide maximum support. This regulates the pressure distribution and ergonomic adjustment of body weight is ensured. The rate of 260 pcs per m<sup>2</sup> is maintained.

## FRAME SUPPORT

STAINLESS STEEL PERIMETER FRAME ensuring spring stabilization and the mattress dimension.

## "V" FOAM EXTRA SUPPORT

HIGH DENSITY FOAM for boarder support of the mattress. In addition, with special notches V-shaped along the length sides and with its open cellular structure, it ensures excellent ventilation of the mattress.

## 10 YEARS WARRANTY

### VENT & FRESH

Special open ventilation cells that ensure air circulation towards all directions in the mattress

### HANDLES

For easy rotation of the mattress

### ZIPPER

Allows the optical control of materials

## EXCELSIOR DIMENSIONS & PRICES

All values above refer to mattresses with length 2m. Mattress dimensions over 2 meters are charged with € 32 per cm.

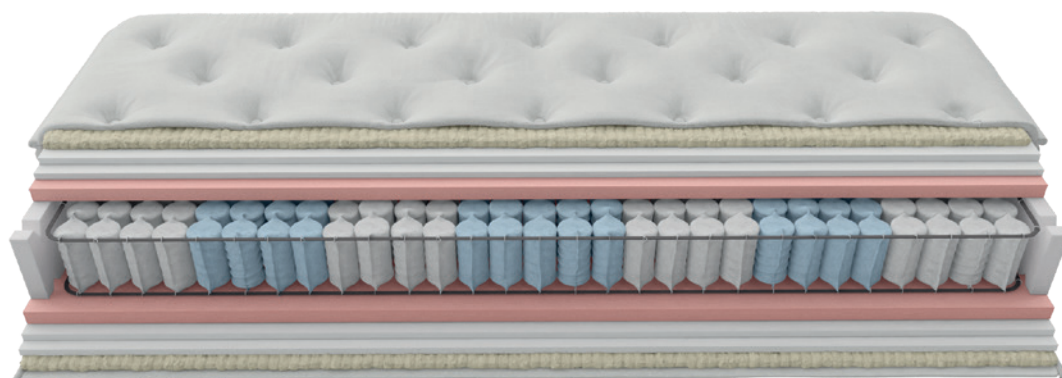
Dimensions (cm)	UP TO 90	91-100	101-110	111-120	121-130	131-140	141-150	151-160	161-170	171-180	181-190	191-200
Price (€)	1008	1116	1206	1301	1401	1500	1599	1697	1794	1889	1993	2088

Prices include VAT. Mattress height 30cm (+/-1 dimensional variation due to material nature).

Insert materials are described in the order they are placed in the mattress for each two sides.



# Excelsior



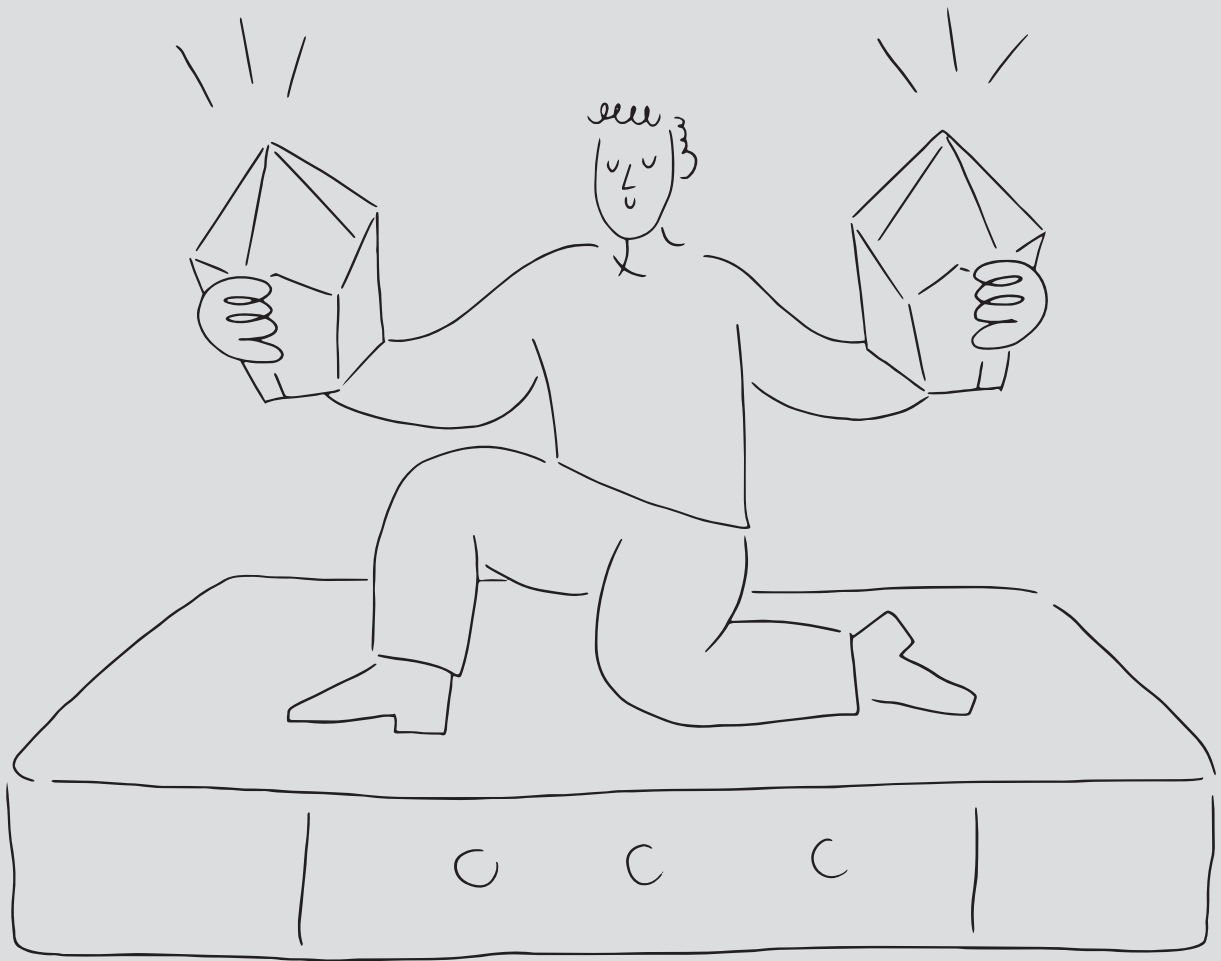
04 TRILLION MATTRESS

10 YEARS WARRANTY



Pioneering relaxation experience. Feel the unrivaled elasticity, excellent resilience and durability, even in high compression conditions with a mattress that combines materials of patented technology and structure while giving TRILLION mattress its special identity. Achieve maximum enjoyment of true relaxation and rejuvenate through an unprecedented relaxation experience.

# Trillion



PRODUCED IN  
ALL DESIRE DIMENSIONS

(+/-1 dimensional variation due to material nature)

# Lithos

## PURE VISCOSE FIRE RETARDANT FABRIC

HUMAN SKIN is our natural connection to the environment. It loves to touch natural materials which have a positive effect on the body, creating the ideal conditions for climate and temperature. Inside the heart of the tree trunk, cellulose is found, a pulp of the structural polysaccharide. After special treatment, it offers us unique gloss fibers from which high quality fabric is produced. Viscose is a very durable fabric which offers great comfort during movements. Also, it has a sensation of embracing the body harmoniously so it is highly requested in textile production. The PURE VISCOSE fabric has excellent heat-regulating properties. Indeed, its structure "traps" the air, providing a natural insulating environment, as it can absorb up to 40% of moisture while reducing static electricity.

## FIBER WAVE LANA

ECO-WOOL LAYER. It contains no chemical resins and glues, it is fully recyclable and hypoallergenic. A exclusively patented product technology is its structure, as the fibers are arranged in sinusoidal order, thus forming a set of waves having a horizontal arrangement. This ensures a great flexibility, excellent restoration and durability, even under high compression conditions.

## DOUBLE HIGH-RESILIENCE FOAM HR

THE STATE-OF-THE-ART HIGH QUALITY FOAM with its open cellular structure allows breathing inside the mattress and at the same time because of its high density ensures maximum performance. Its behavior provides high elasticity, excellent recovery and durability even after years of use. A double layer of material is used on each side of the mattress.

## QUILTED 5M ARTWORK

GRECO STROM INNOVATES IN THE DESIGN AND QUALITY OF QUILTING. It includes in its production, modern technology machines capable of operating precisely a lot of materials together. In this way the advantages of handmade mattresses are combined with the technological evolution, resulting in extremely soft sensation, great comfort and aesthetically perfect result.

## 7 MULTI-ZONE LATEX LAYER

LATEX is a white, milky liquid that comes from the extracts of the Hevea brasiliensis tropical tree and is characterized by its unique flexibility and excellent restoration. Thanks to its seven different support zones it ensures an evenly distribution of body pressure during sleep. In this way, it promotes proper blood circulation in the spine and the limbs. Its numerous holes allow for optimum ventilation of the mattress, preventing the growth of microbes, fungi and mites, thus ensuring the best hygiene conditions.

## 7 ZONE POCKET SPRING 500S

UNIT OF INDEPENDENT SPRINGS HOSTED SEPARATELY IN CLOTH POUCHES. The 7 different support zones allow individual elasticity of each spring and provide maximum support. This regulates the pressure distribution and ergonomic adjustment of body weight is ensured. The rate of 260 pcs per m<sup>2</sup> is maintained.

## FRAME SUPPORT

STAINLESS STEEL PERIMETER FRAME ensuring spring stabilization and the mattress dimension.

## "V" FOAM EXTRA SUPPORT

HIGH DENSITY FOAM for boarder support of the mattress. In addition, with special notches V-shaped along the length sides and with its open cellular structure, it ensures excellent ventilation of the mattress.

## 10 YEARS WARRANTY

### VENT & FRESH

Special open ventilation cells that ensure air circulation towards all directions in the mattress

### HANDLES

For easy rotation of the mattress

### ZIPPER

Allows the optical control of materials

## TRILLION DIMENSIONS & PRICES

All values above refer to mattresses with length 2m. Mattress dimensions over 2 meters are charged with € 32 per cm.

Dimensions (cm)	UP TO 90	91-100	101-110	111-120	121-130	131-140	141-150	151-160	161-170	171-180	181-190	191-200
Price (€)	787	869	939	1008	1080	1152	1230	1306	1379	1450	1528	1599

Prices include VAT. Mattress height 30cm (+/-1 dimensional variation due to material nature).

Insert materials are described in the order they are placed in the mattress for each two sides.

# Trillion



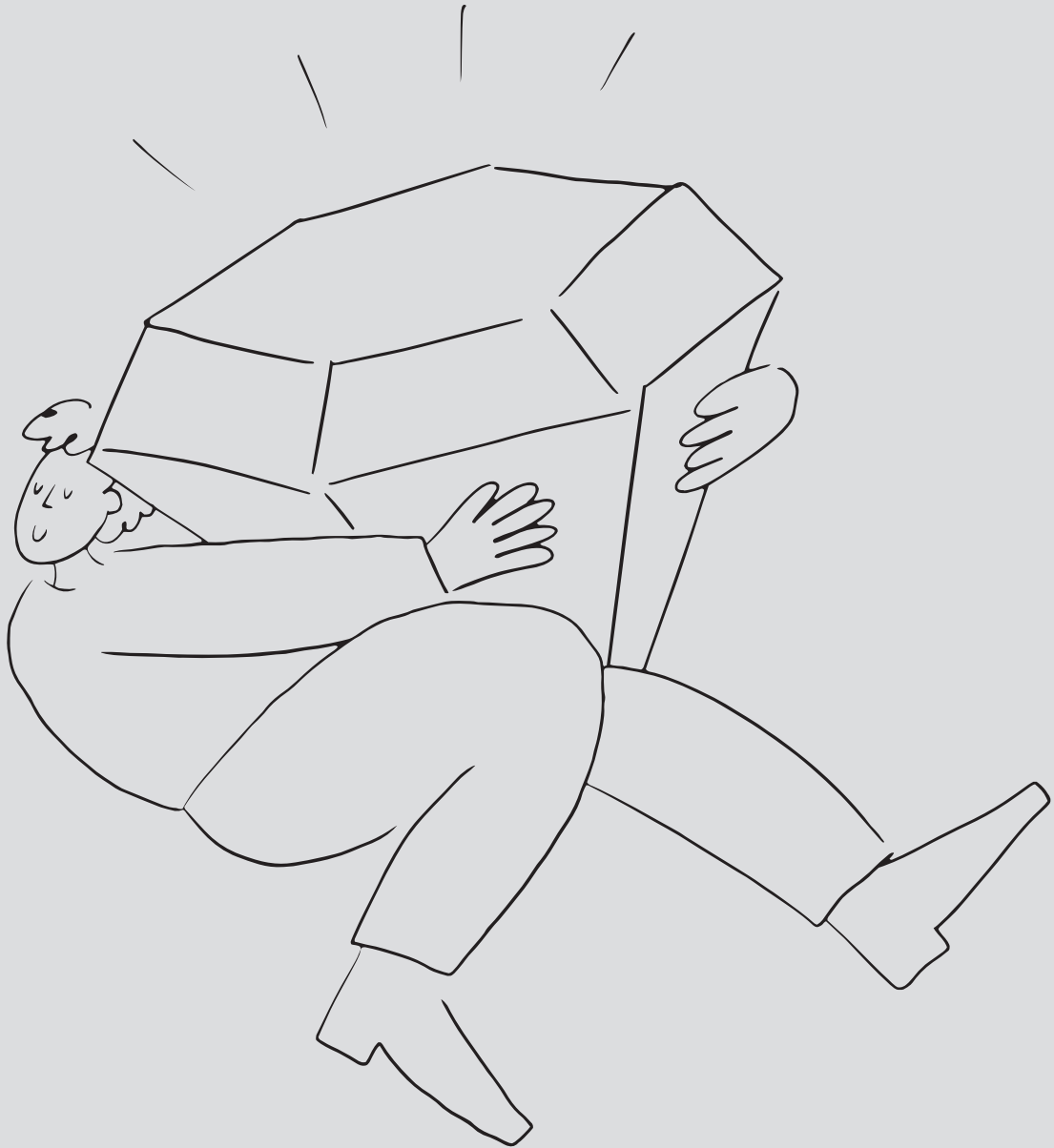
05 EMERALD MATTRESS

10 YEARS WARRANTY



Unique comfortable feeling with endurance! Activate the service of the absolute sleep ritual. The very strong core with all the special design advantages of this wonderful mattress, provides you with high quality, stability and durability. EMERALD. Its durable quality and luxurious functionality challenge you to redefine your views on sleep!

# Emerald



PRODUCED IN  
ALL DESIRE DIMENSIONS

(+/-1 dimensional variation due to material nature)

# Lithos

## QUILTED 5M ARTWORK

GRECO STROM INNOVATES IN THE DESIGN AND QUALITY OF QUILTING. It includes in its production, modern technology machines capable of operating precisely a lot of materials together. In this way the advantages of LITHOS handmade mattresses are combined with the technological evolution, resulting in extremely soft sensation, great comfort and aesthetically perfect result.

## 7 MULTI-ZONE LATEX LAYER

THANKS TO ITS SEVEN DIFFERENT SUPPORT ZONES it ensures an evenly distribution of body pressure during sleep. In this way, it promotes proper blood circulation in the spine and the limbs. Its numerous holes allow for optimum ventilation of the mattress, preventing the growth of microbes, fungi and mites, thus ensuring the best hygiene conditions.

## SC FIBER FILTER

FILTER FROM STERILIZED COTTON FIBERS offers ideal insulation and support.

## MINI BONNELL INNERSPRINGS

THIS SPRING SYSTEM combines the benefits of a BONNELL system with GRECO STROM experience, high quality wire selection and absolute precision in production as the small diameter of each spring achieves the maximum number of springs per m2 providing the most powerful core for a mattress of high quality, stability and durability. In addition, the MINI BONNELL INNERSPRINGS type springs have a very high air permeability, providing the optimal hygiene conditions inside the mattress. The rate of 196 pcs per m2 is maintained.

## "V" FOAM EXTRA SUPPORT

HIGH DENSITY FOAM for boarder support of the mattress. In addition, with special notches V-shaped along the length sides and with its open cellular structure, it ensures excellent ventilation of the mattress.

## 10 YEARS WARRANTY

**PURE VISCOSE FIRE RETARDANT FABRIC**  
HUMAN SKIN is our natural connection to the environment. It loves to touch natural materials which have a positive effect on the body, creating the ideal conditions for climate and temperature. Inside the heart of the tree trunk, cellulose is found, a pulp of the structural polysaccharide. After special treatment, it offers us unique gloss fibers from which high quality fabric is produced. Viscose is a very durable fabric which offers great comfort during movements. Also, it has a sensation of embracing the body harmoniously so it is highly requested in textile production. The PURE VISCOSE fabric has excellent heat-regulating properties. Indeed, its structure "traps" the air, providing a natural insulating environment, as it can absorb up to 40% of moisture while reducing static electricity.

## FIBER WAVE LANA

ECO-WOOL LAYER. It contains no chemical resins and glues, it is fully recyclable and hypoallergenic. A exclusively patented product technology is its structure, as the fibers are arranged in sinusoidal order, thus forming a set of waves having a horizontal arrangement. This ensures a great flexibility, excellent restoration and durability, even under high compression condition.

## DOUBLE HIGH-RESILIENCE FOAM HR

THE STATE-OF-THE-ART HIGH QUALITY FOAM with its open cellular structure allows breathing inside the mattress and at the same time because of its high density ensures maximum performance Its behavior provides high elasticity, excellent recovery and durability even after years of use. A double layer of material is used on each side of the mattress.

## VENT & FRESH

Special open ventilation cells that ensure air circulation towards all directions in the mattress

## HANDLES

For easy rotation of the mattress

## ZIPPER

Allows the optical control of materials

## EMERALD DIMENSIONS & PRICES

All values above refer to mattresses with length 2m. Mattress dimensions over 2 meters are charged with € 32 per cm.

Dimensions (cm)	UP TO 90	91-100	101-110	111-120	121-130	131-140	141-150	151-160	161-170	171-180	181-190	191-200
Price (€)	725	807	885	960	1026	1096	1168	1239	1301	1362	1435	1496

Prices include VAT. Mattress height 26 cm (+/-1 dimensional variation due to material nature).  
Insert materials are described in the order they are placed in the mattress for each two sides.



# Emerald



# Do you



ever fly

This image shows a single sheet of white paper with horizontal blue ruling lines. The lines are evenly spaced and run across the width of the page. There are no margins, text, or other markings on the paper.

in your

# dreams?



DESIGN BY G DESIGN STUDIO

ATHENS MATTESSSES LTD "GRECO STROM" a purely Greek company, has been involved in the manufacturing of mattresses, beds and sleep products for over 58 years while successfully operating in hotel, medical, marine and hospital equipment, as well as with absolute respect and sensitivity in baby sleep products.

For further information visit our homepage:

GRECO STROM LTD: End of Makrigianni str., Mandra Attica, 19600 Athens - Greece | T. +30 210 5552000 | E. [info@grecostrom.gr](mailto:info@grecostrom.gr)

**[grecostrom.gr](http://grecostrom.gr)**  
**[shop.grecostrom.gr](http://shop.grecostrom.gr)**

GRECO STROM maintains the right to change the technical specifications and the prices without any notice.  
The company has no responsibility for printing mistakes.



