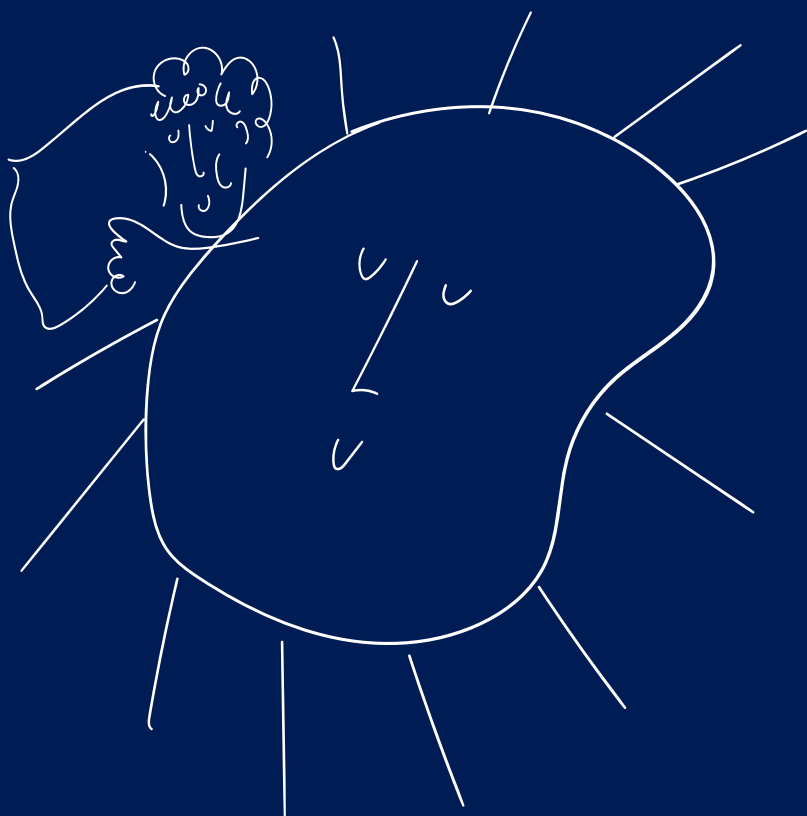


Hug

ELECTRIC BLANKET

**MANUAL INSTRUCTIONS
& GOOD OPERATION**



GRECO  STROM

QUALITY SINCE 1964

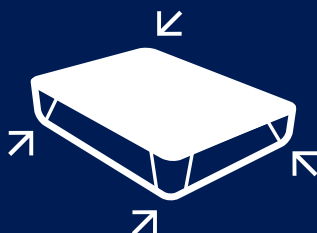
You are now an owner of an electric Hug blanket of GRECO STROM company, which has been manufactured according to the strictest international standards with the most perfect methods of modern technology. The control concerning its good operation and safe use has been carried out by state-of-the-art electronic machines.

Pay attention to the instructions,
just as described, because their neglect
can cause overheating and make
the use of the blanket inappropriate.



↓ Instructions

- Your blanket has been designed to be placed on top of the mattress and protective mattress cover and under the sheet (bottom sheet), to be tied firmly without folds and irregularities on its surface, with the border grips fitted for this purpose.
- The blanket does not extend to the headrest.
- Its size is appropriate to give temperature throughout the mattress width except for the headrest.
- The blanket should not fold or crease at the edges.
- When the blanket is spread on the mattress according to the instructions, then plug it in.
- The power cord and switch must be off the mattress.
- Spread your blanket and fasten it with the special border grips as in the drawing.



- Make sure your blanket is not longer and not wider than the mattress.
- The flexible power cord and switch must be placed outside mattress and not under the headrest or other blankets.
- Do not use pins or safety pins to secure the blanket on the mattress.
- This blanket is used in an AC circuit 230V power as shown on the label (60 Watt - IP 20).

↓ Operation of the electric blanket

The electric blanket is made of the best materials that offer complete safety, great durability, and comfort. A big advantage is that it removes the feeling of moisture from the mattress and covers, with a beneficial benefit for those suffering from rheumatism, arthritis, vertebra arthritis, and other similar diseases.

↓ First day of operation

Turn the switch to the maximum degree (number 3) as soon as you spread the blanket and leave it there for at least three (3) hours. Then, you can make normal use of the blanket. The electric blanket will provide delight and warmth.

↓ Daily handling

About one (1) hour before going to bed, plug the blanket and turn the switch to 3 (high temperature). When you go to bed, turn the switch to 1 (low temperature). Here you will have a normal and pleasant temperature while you sleep. No.2 is used when it is very cold. If you want, unplug it completely.

↓ Storage during summer months

During the summer months, the blanket should be folded without pressure and stored in its bag.

↓ Avoid dry cleaning and washing

Causes damage to the operation of the blanket.

↓ In case of stains

Lightly washing the stain locally with warm soapy water is enough.

THE BLANKET SHOULD NOT BE WASHED IN A WASHING MACHINE.



What you need to remember

CAUTION:

- Always be well spread during use.
- When the electric blanket is in use, it is forbidden to put a coat, cardigans, jackets, or other items on the bed, as this may contribute to overheating and eventually damage.
- Every morning when you get up, turn off the blanket and unplug the power cord.
- Do not leave the blanket on when you get up or when you leave the house.
- Do not leave patients or babies unattended on the mattress when blanket is in use.
- If the blanket is wet, do not operate it.



Technical specifications

Declaration of conformity

EMC directive	2004/108/EC
Low voltage directive	2006/95
Rohs directive EU	2011/65
EN	62233
EN	60335 - 1/2012
EN	60335 - 2 - 17/2013

The electric blanket is manufactured according to the requirements of the following guidelines and standards:

Specifications

Size (mm)	75 x 155 (Single)	140 x 155 (Double)	170 x 155 (Ultra Double)
Voltage	230 V	230 V	230 V
Power	60 W	120 W (2 x 60)	120 W (2 x 60)
Frequency	50 Hz	50 Hz	50 Hz
Insulation	IP 20 CLASS II	IP 20 CLASS II	IP 20 CLASS II
Construction standards	EN 60335-2-17	EN 60335-2-17	EN 60335-2-17
Control	3-position (interior lamp)	2x3 position (interior lamp)	2x3 position (interior lamp)

Electromagnetic compatibility: **complete neutralization of electromagnetic fields**

Manufacturer: **DREAM SA - GREECE**

GRECO STROM

QUALITY SINCE 1964



Withdraw the product
afterwards 10 years of its use



Manufactured in **Greece**
for **GRECO STROM LTD**



End of Makrigianni str., Mandra Attica, 19600 Athens - Greece
T.+30 210 55 52 000, E. info@grecostrom.gr