

Body topia

2025

GRECO STROM

Bodytopia

BODYTOPIA MATTRESSES COLLECTION

Bedtime



GRECO STROM is particularly proud that all certifications have been received by the Oeko-Tex, Swiss Approval International, Bureau Veritas, LRQA Business Assurance & MIRTEC SA. These are institutions that check with frequent inspections the proper implementation, maintenance and continuous upgrading of the quality systems.



Stories

DESIGN, PRODUCTION, QUALITY CONTROL AND DISTRIBUTION OF THE COMPANY'S PRODUCTS HAVE BEEN CERTIFIED ACCORDING TO:

STANDARD 100 BY OEKO-TEX®

IT CONCERNS THE ABSENCE OF HARMFUL MATERIALS AND SUBSTANCES FROM BABY AND CHILDREN'S MATTRESSES and all the materials that make them up. OEKO-TEX® STANDARD 100 is a uniform system of laboratory testing and certification for textiles in raw, intermediate and finished form from all stages of production and is recognised internationally throughout the world. The tests are carried out by independent partner institutes on the basis of the extensive OEKO-TEX® criteria. The tests take into account numerous prohibited and non-prohibited substances which may be harmful to health. In many cases the STANDARD 100 limits are stricter than national and international requirements.

SWISS APPROVAL INTERNATIONAL

THE GRECO STROM MATTRESSES have been tested and certified by the Swiss Approval International, as compliance with applicable European directives and regulations. The products comply with the requirements of the European Standard: EN 16890:2017. Children's furniture – Mattresses for cots and cribs – Safety requirements and test methods.

THE MATTRESSES OF THE BODYTOPIA AND THE HYPNATURA SERIES have been tested for durability and have been certified by the Swiss institution with the safety certification and quality of Swiss Approval products International in compliance with existing European directives and regulations and comply with the requirements of the European standard: EN 1957: 2012 & EN 1334: 1999.

ISO 9001 INTERNATIONAL QUALITY MANAGEMENT SYSTEM

ISO 9001 is an internationally recognized standard for quality assurance and quality management for businesses.

ISO 14001 INTERNATIONAL ENVIRONMENTAL MANAGEMENT SYSTEM

ISO 14001 is an internationally recognized standard for environmental management by businesses. It provides guidelines and required checkpoints that must be applied to any activities having an impact on the environment.

ISO 13485 INTERNATIONAL QUALITY ASSURANCE SYSTEM FOR MEDICAL DEVICES

THE ISO 13485 standard establishes the requirements of the quality assurance system for companies involved in designing, producing, trading, installing and providing technical support for medical devices and products.

MARINE MATTRESSES APPROVAL BY MIRTEC SA (MATERIALS INDUSTRIAL RESEARCH & TECHNOLOGY CENTER)

UPGRADING QUALITY PRODUCTS that are required to meet specifications and are suitable to equip ships, yachts, hotels and general spaces and it is considered necessary to use mattresses with particular fire resistance, therefore GRECO STROM designs and produces a new series of mattresses that meet the requirements as outlined in Directive 2014/90 EU and Regulation (EU) 2020/1170 for MED / 3.21 bedding product group.

- SOLAS 74 Reg. II-2/3, Reg. II-2/9 & Reg. X / 3 &
- IMO Res. MSC. 307 (88) – (2010 FTP Code) Annex 1, Part 9

ALTERNATIVE PACKAGING MANAGEMENT

WITH ABSOLUTE RESPECT TO THE ENVIRONMENT, GRECO STROM belongs to the innovators of the alternative packaging management system in collaboration with the Greek Recycling Recovery Company.

IT'S A BEDTIME STORY

Bodytopia

MATTRESSES SPECIALLY DESIGNED FOR EVERYONE



Mattresses that respond to the desire to rejuvenate and relax within the most personal eight hours of the day.

Positive emotions that accompany the experience of good sleep.

Moments of dreaming, reminiscence, rest, moments of true psychosomatic uplift and satisfaction.

Collection



6

Bodytopia

01 BOUNCE MATTRESS

7 YEARS GUARANTEE



PRODUCED IN
ALL DESIRE DIMENSIONS

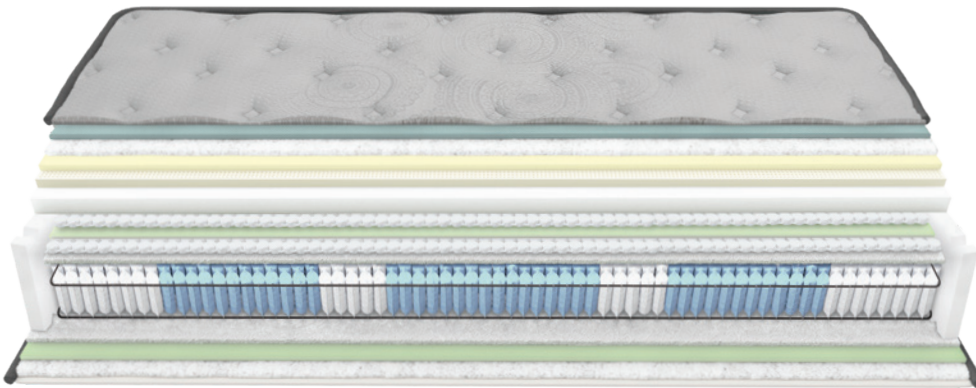
(+/-1 dimensional variation due to material nature)



Bounce



Bodytopia



VENT & FRESH

Special open ventilation cells that ensure air circulation towards all directions in the mattress.

HANDLES

For easy rotation of the mattress.

ZIPPER

Allows the optical control of materials.

Bounce

FORESTEX™ FABRIC

FORESTEX™ FABRIC is produced using yarns derived from a natural, renewable and biodegradable source, wood pulp. A particular characteristic of these yarns is their cool and silky texture which gives them a natural "shine". FORESTEX™ fabric is breathable with very good moisture absorption characteristics and stands out for its thermoregulatory properties. In addition, it offers great comfort of movement by hugging the body harmoniously. The ultimate combination of excellent durability, soft feel and luxurious appearance.

MEMORY FOAM GEL INN

MEMORY FOAM enriched with thermoregulatory gel. One of the most exciting breakthroughs in memory foam technology. It provides optimal body support by distributing weight evenly resulting in relief of pressure points and proper spinal alignment. In addition, the open cellular structure of the material allows air to breathe.

POLYESTER WAD

WHITE PAD WITH CERTIFIED HYPOALLERGENIC PROPERTIES made of 100% polyester antibacterial fiber. Allows internal ventilation of the mattress and wicks away moisture. It has excellent durability, elasticity and resilience.

CELL FOAM INN

SPECIALIZED FOAM of the latest technology, specially designed for quilting use.

QUILTED HILL JUMP SYSTEM

JUMP QUILTING TREATMENT for an extremely soft feel, great comfort and an aesthetically perfect result, which is achieved by advanced technology machines.

NATURAL LATEX LAYER

NATURAL LATEX LAYER. It is a natural milky liquid, derived from the sap of the tropical rubber tree. The production process is carried out in state-of-the-art machinery, giving us a material with unique elasticity, flexibility and excellent resilience. It follows and adapts perfectly to the contours of the body, ensuring the distribution of the pressure exerted during sleep. In this way, it promotes proper blood circulation in the spine and limbs. Its numerous perforations allow for ideal ventilation of the mattress, preventing the growth of microbes and mites. A high quality material, free of toxic and allergenic substances, that will maintain its shape and comfort over time.

INTEX FOAM LAYER

ITS EXCELLENT FLEXIBILITY allows for even weight distribution, which prevents the creation of pressure points. In addition, it is breathable and helps to maintain the ideal sleeping temperature.

TABLET MICRO POCKET SPRINGS 1000S

THE NEW TABLET MICRO POCKET SPRINGS 1000S independent spring unit offers a high level of support and comfort. Each spring is individually housed in fabric pockets allowing each spring unit to react completely independently. Combined with the 7 ZONE MICRO POCKET SPRINGS 1000S independent spring unit, additional resistance is provided when more pressure is applied, meaning that increased support is ensured when and where it is needed, thus contributing to the maximum anatomical performance of the mattress. The ratio of 500 m² per m² shall be respected.

GRANT RELIEF FOAM LAYER

SPECIAL HIGH ELASTICITY FOAM that absorbs shocks and in combination with the TABLET MICRO POCKET SPRINGS we achieve the maximum performance of the mattress.

TABLET MICRO POCKET SPRINGS 1000S

THE NEW TABLET MICRO POCKET SPRINGS 1000S independent spring unit offers a high level of support and comfort. Each spring is individually housed in fabric pockets allowing each spring unit to react completely independently. Combined with the 7 ZONE MICRO POCKET SPRINGS 1000S independent spring unit, additional resistance is provided when more pressure is applied, meaning that increased support is ensured when and where it is needed, thus contributing to the maximum anatomical performance of the mattress. The ratio of 500 m² per m² shall be respected.

FRAME SUPPORT

STEEL PERIMETER SUPPORT FRAME that ensures spring stabilization and mattress dimension.

UPPER BORDER SUPPORT SYSTEM

GRECO STROM, through constant research and implementation of innovative technologies, has designed the new perimeter mattress support system, which limits the retraction during the process of vertical application of the weight force. It consists of Foam Support of increased density with special V-shaped notches on the longitudinal sides and FOAM JUMP QUILTED SUPPORT treatment quilted to the outer fabric of the mattress.

SC FIBER FILTER

FILTER made of sterile cotton fibres that offers ideal insulation and support.

7 ZONE MICRO POCKET SPRING UNIT 1000S

UNIT OF INDEPENDENT SPRINGS of type 7 ZONE MICRO POCKET SPRING 1000S type, housed separately in fabric pockets. The 7 different support zones allow for individual flexibility of each spring and provide a high degree of support. This adjusts the distribution of pressure and ensures ergonomic adaptation to body weight, evolving anatomy to the ultimate degree. The ratio of 500 m² per m² shall be respected.

SC FIBER FILTER

GRANT RELIEF FOAM INN

POLYESTER WAD

FORESTEX™ FABRIC

7 YEARS WARRANTY



This product has been tested for durability and complies with the requirements of the European standard: EN 1957: 2012 & EN 1334: 1999

10

Bodytopia

01 SYSTEM MATTRESS

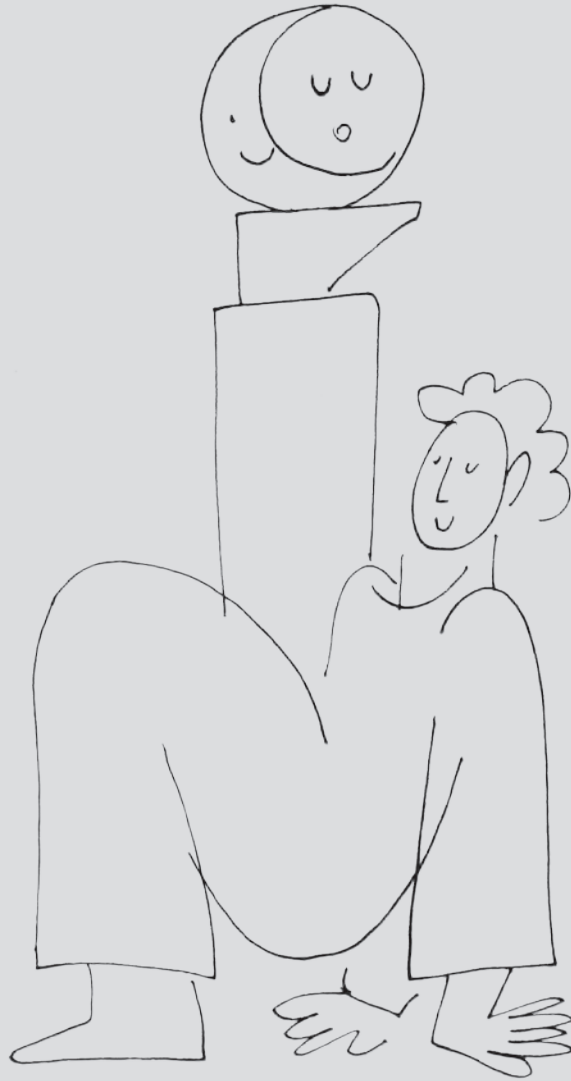
7 YEARS GUARANTEE

**PRODUCED IN
ALL DESIRE DIMENSIONS**

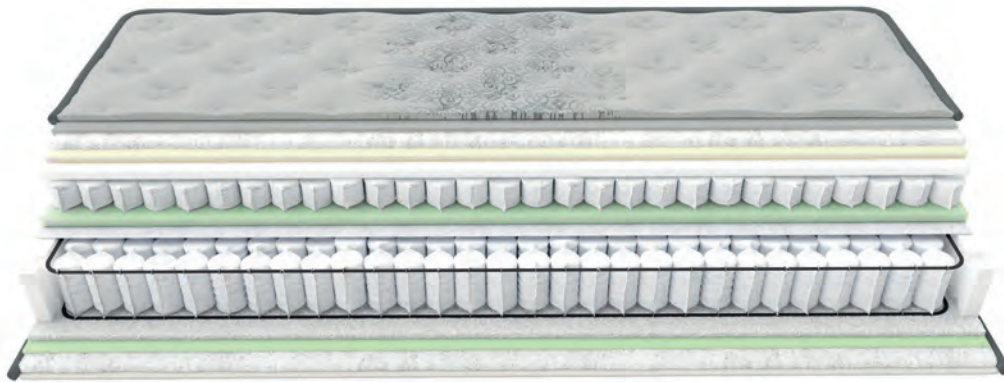
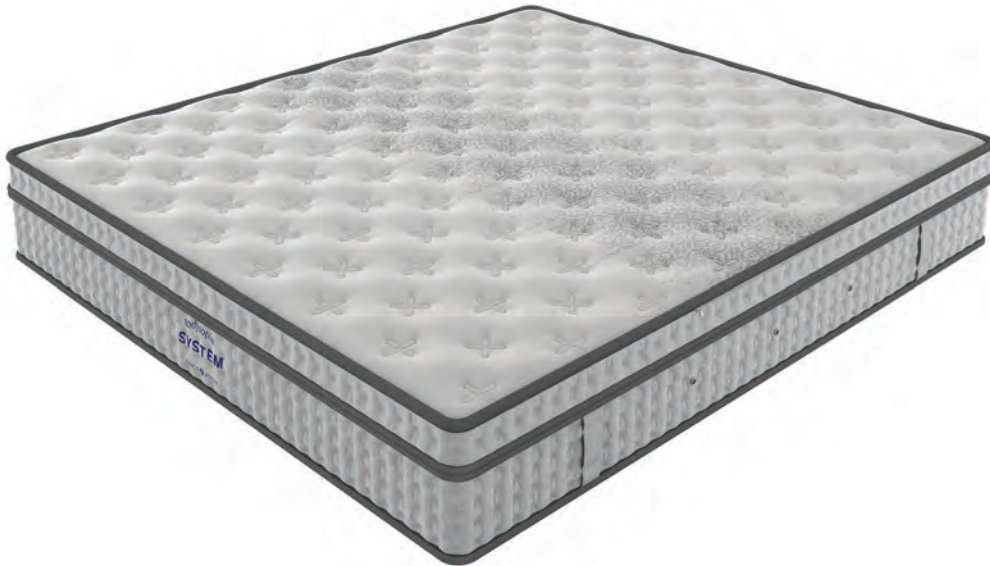
(+/-1 dimensional variation due to material nature)



System



Bodytopia



VENT & FRESH

Special open ventilation cells that ensure air circulation towards all directions in the mattress.

HANDLES

For easy rotation of the mattress.

ZIPPER

Allows the optical control of materials.

System

FORESTEX FABRIC™

FOR THE PRODUCTION OF FORESTEX FABRIC, we use yarn derived from a natural, renewable and biodegradable source, wood pulp. The special characteristic of this yarn is the cool and silky touch, a texture which gives a natural 'glow'. The FORESTEX fabric is highly breathable with very good moisture absorption characteristics and stands out for its thermoregulatory properties. In addition, it offers great comfort to movements while embracing harmoniously the body. The perfect combination of excellent durability, soft sensation and luxurious appearance.

ACTIVE FOAM INN

SOFT AND DURABLE FOAM tested and suitable for quilted mattress treatment.

POLYESTER WAD

WHITE WAD with certified hypoallergenic properties from 100% polyester antibacterial fiber. It allows the internal ventilation of the mattress and removes moisture. It has excellent strength, elasticity and resilience.

CELL FOAM INN

Specialized foam with the latest technology, especially designed for quilting.

QUILTED HILL JUMP SYSTEM

QUILT PROCESS with JUMP system for extremely soft sensation, great rest and aesthetically perfect result achieved by state-of-the-art machines.

INTEX FOAMLAYER

EXCELLENT FLEXIBILITY allows evenly distributed weight, which prevents the creation of pressure points. In addition, it is breath-able and helps maintain the ideal sleeping temperature.

MINI POCKET SPRINGS UNIT

THE NEW UNIT OF INDIVIDUAL SPRINGS type MINI POCKET offers a high level of support and comfort. Each spring is hosted separately in fabric pockets allowing each spring unit to react completely independently. In combination with the independent spring unit POCKET SPRINGS SCAN SYSTEM it provides extra resistance when there is more pressure, which means that increased support is secured when and where needed. The maximum anatomical performance of the mattress is achieved and the rate of 260pcs per m² is maintained.

GRAND RELIEF FOAM LAYER

SPECIAL HIGH ELASTICITY FOAM which absorbs vibration and in combination with the MINI POCKET springs achieves maximum performance behavior of the mattress.

FLEXCOAT

A SPECIFIC FLEXIBLE AND RESISTANT 3D material, which works as an excellent raw material protection system, thus contributing to proper function and mattress comfort.

POCKET SPRINGS SCAN SYSTEM

THE ADVANCED SCAN SYSTEM TECHNOLOGY as well as the specially studied cylindrical shape of the independent springs, provide a high degree of support while their main advantage is the reduced sense of motion transfer. In addition, it ensures point support in any sleeping position you prefer, as well as noise avoidance. The rate of 260pcs per m² is maintained.

FRAME SUPPORT

STAINLESS STEEL FRAMEWORK SUPPORT ensures spring stabilization and mattress dimension.

UPPPER BORDER SUPPORT SYSTEM

GRECO STROM through constant search and implementation of innovative technologies, has designed the new perimetric mattress support system, limiting recession in the process of the vertical pressure of its weight. It consists of increased density FOAM SUPPORT with special V-shaped notches along the sides and FOAM JUMP QUILTED SUPPORT process for the exterior mattress fabric.

SC FIBER FILTER

FILTER FROM STERILIZED COTTON FIBERS offers ideal insulation and support.

GRAND RELIEF FOAM INN

Elastic foam specially designed for quilt treatment.

POLYESTERWAD

FORESTEX FABRIC™

7 YEARS GUARANTEE



This product has been tested for durability and complies with the requirements of the European standard: EN 1957: 2012 & EN 1334: 1999

14

Bodytopia

02 MODUS MATTRESS

7 YEARS GUARANTEE

**PRODUCED IN
ALL DESIRE DIMENSIONS**

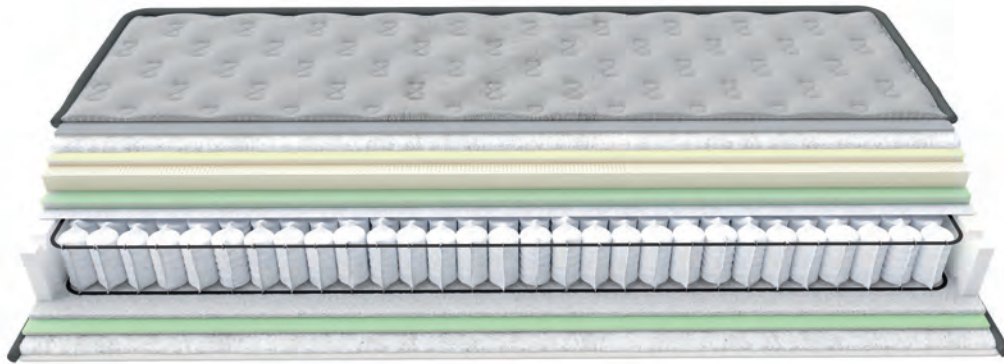
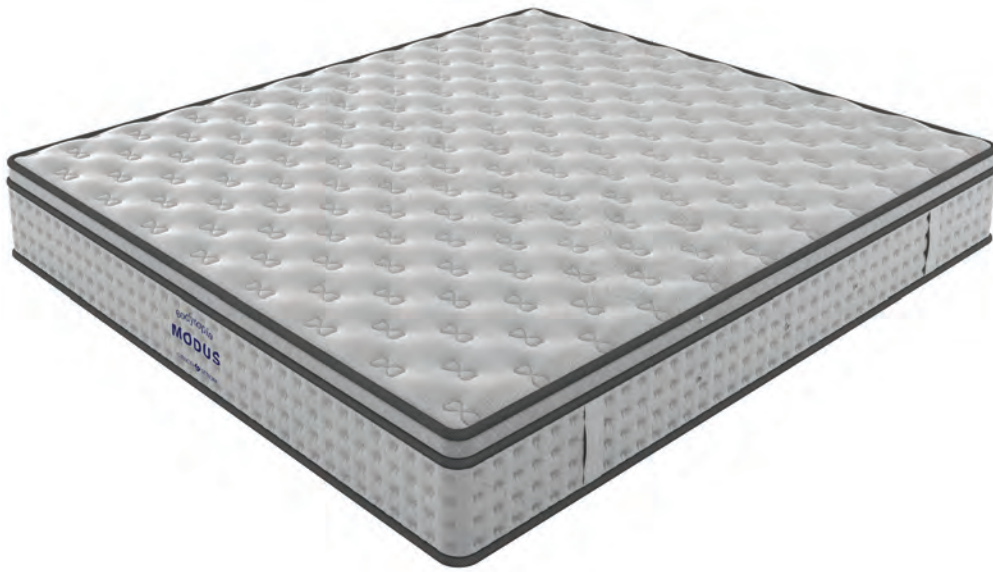
(+/-1 dimensional variation due to material nature)



Modus



Bodytopia



VENT & FRESH

Special open ventilation cells that ensure air circulation towards all directions in the mattress.

HANDLES

For easy rotation of the mattress.

ZIPPER

Allows the optical control of materials.

Modus

FORESTEX FABRIC™

FOR THE PRODUCTION OF FORESTEX FABRIC, we use yarn derived from a natural, renewable and biodegradable source, wood pulp. The special characteristic of this yarn is the cool and silky touch, a texture which gives a natural 'glow'. The FORESTEX fabric is highly breathable with very good moisture absorption characteristics and stands out for its thermoregulatory properties. In addition, it offers great comfort to movements while embracing harmoniously the body. The perfect combination of excellent durability, soft sensation and luxurious appearance.

ACTIVE FOAM INN

SOFT AND DURABLE FOAM tested and suitable for quilted mattress treatment.

POLYESTER WAD

WHITE WAD with certified hypoallergenic properties from 100% polyester antibacterial fiber. It allows the internal ventilation of the mattress and removes moisture. It has excellent strength, elasticity and resilience.

CELL FOAM INN

SPECIALIZED FOAM with the latest technology, especially designed for quilting.

QUILTED HILL JUMP SYSTEM

QUILT PROCESS with JUMP system for extremely soft sensation, great rest and aesthetically perfect result achieved by state-of-the-art machines.

NATURAL LATEX LAYER

NATURAL LATEX LAYER. It is a natural milky liquid, derived from the extracts of the tropical tree. Its production process with the latest technology machines giving us a material of unique elasticity, flexibility and excellent restoration. It follows and perfectly adapts to the body shape ensuring distribution of the pressure exerted during sleep. In this way, it promotes proper blood circulation in the spine and the limbs. Its numerous holes, allow optimal ventilation of the mattress, preventing the development of germs and mites. A high-quality material, free of toxic and allergenic substances, which maintains its shape and comfort over time.

GRAND RELIEF FOAM LAYER

SPECIAL HIGH ELASTICITY FOAM which absorbs vibration and in combination with the MINI POCKET springs achieves maximum performance behavior of the mattress.

FLEXICOAT

A SPECIFIC FLEXIBLE AND RESISTANT 3D material, which works as an excellent raw material protection system, thus contributing to proper function and mattress comfort.

POCKET SPRINGS SCAN SYSTEM

THE ADVANCED SCAN SYSTEM TECHNOLOGY as well as the specially studied cylindrical shape of the independent springs, provide a high degree of support while their main advantage is the reduced sense of motion transfer. In addition, it ensures point support in any sleeping position you prefer, as well as noise avoidance. The rate of 260pcs per m² is maintained.

FRAME SUPPORT

STAINLESS STEEL FRAMEWORK SUPPORT ensures spring stabilization and mattress dimension.

UPPER BORDER SUPPORT SYSTEM

GRECO STROM through constant search and implementation of innovative technologies, has designed the new perimetric mattress support system, limiting recession in the process of the vertical pressure of its weight. It consists of increased density FOAM SUPPORT with special V-shaped notches along the sides and FOAM JUMP QUILTED SUPPORT process for the exterior mattress fabric.

SC FIBER FILTER

FILTER FROM STERILIZED COTTON FIBERS offers ideal insulation and support.

GRAND RELIEF FOAM INN

Elastic foam specially designed for quilt treatment.

POLYESTER WAD

FORESTEX FABRIC™

7 YEARS GUARANTEE



This product has been tested for durability and complies with the requirements of the European standard: EN 1957: 2012 & EN 1334: 1999

18

Bodytopia

03 RELIEF MATTRESS

7 YEARS GUARANTEE

PRODUCED IN
ALL DESIRE DIMENSIONS

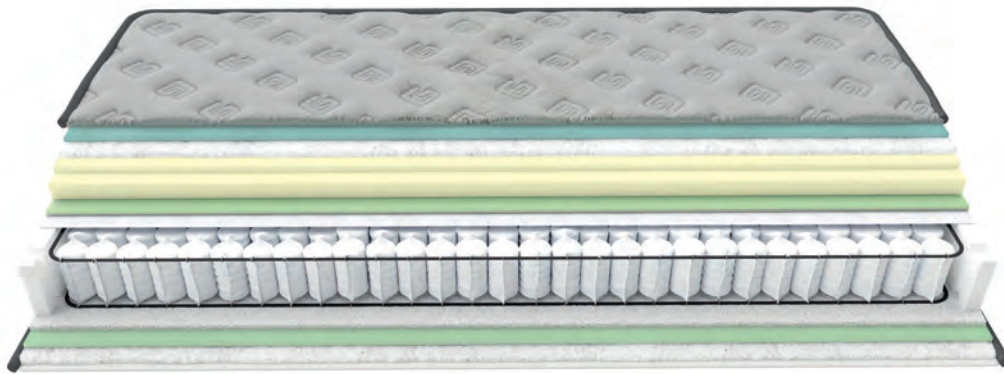
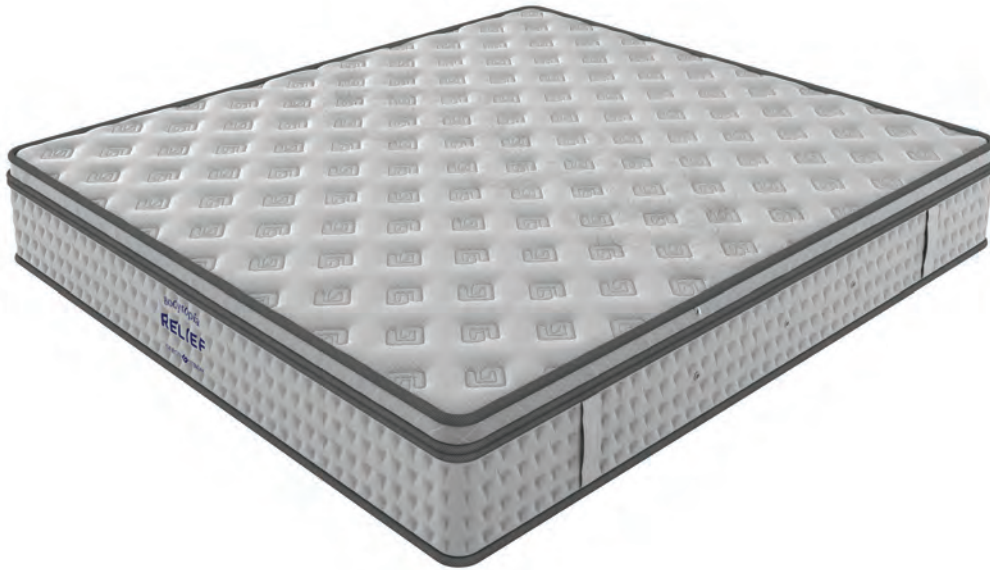
(+/-1 dimensional variation due to material nature)



Relief



Bodytopia



VENT & FRESH

Special open ventilation cells that ensure air circulation towards all directions in the mattress.

HANDLES

For easy rotation of the mattress.

ZIPPER

Allows the optical control of materials.

Relief

FORESTEX FABRIC™

FOR THE PRODUCTION OF FORESTEX FABRIC, we use yarn derived from a natural, renewable and biodegradable source, wood pulp. The special characteristic of this yarn is the cool and silky touch, a texture which gives a natural 'glow'. The FORESTEX fabric is highly breathable with very good moisture absorption characteristics and stands out for its thermoregulatory properties. In addition, it offers great comfort to movements while embracing harmoniously the body. The perfect combination of excellent durability, soft sensation and luxurious appearance.

MEMORY FOAM GEL INN

MEMORY FOAM enriched with thermosetting gel. From the most exciting discoveries in material technology memory foam. Provides optimal body support, evenly distributing weight, resulting in relief of pressure points and proper alignment of the spine. In addition, its open cellular structure material, allows air breathability.

POLYESTER WAD

WHITE WAD with certified hypoallergenic properties from 100% polyester antibacterial fiber. It allows the internal ventilation of the mattress and removes moisture. It has excellent strength, elasticity and resilience.

MEMORY FOAM SOFT INN

Elastic viscose (memory foam) of increased density, used in quilting and works according to body temperature. Minimizes pressure points, causing proper spinal and limb perfusion. This material creates "non-gravity" conditions, so it was used by NASA to relieve the pressure that astronauts had to deal with.

QUILTED HILL JUMP SYSTEM

QUILT PROCESS with JUMP system for extremely soft sensation, great rest and aesthetically perfect result achieved by state-of-the-art machines.

MEMORY FOAM SOFT LAYER

Elastic viscose layer (memory foam) of increased density which works according to body temperature. Minimizes pressure points, causing proper spinal and limb perfusion. This material creates "non-gravity" conditions, so it was used by NASA to relieve the pressure that astronauts had to deal with.

GRANDRELIEFFOAMLAYER

FOAM LAYER which allows internal ventilation and works perfectly with the MEMORY FOAM SOFT LAYER. The result is the maximum performance behavior of the mattress.

FLEXCOAT

A SPECIFIC FLEXIBLE AND RESISTANT 3D material, which works as an excellent raw material protection system, thus contributing to proper function and mattress comfort.

POCKET SPRINGS SCAN SYSTEM

THE ADVANCED SCAN SYSTEM TECHNOLOGY as well as the specially studied cylindrical shape of the independent springs, provide a high degree of support while their main advantage is the reduced sense of motion transfer. In addition, it ensures point support in any sleeping position you prefer, as well as noise avoidance. The rate of 260pcs per m² is maintained.

FRAMESUPPORT

STAINLESS STEEL FRAMEWORK SUPPORT ensures spring stabilization and mattress dimension.

UPPER BORDER SUPPORT SYSTEM

GRECO STROM through constant search and implementation of innovative technologies, has designed the new perimetric mattress support system, limiting recession in the process of the vertical pressure of its weight. It consists of increased density FOAM SUPPORT with special V-shaped notches along the sides and FOAM JUMP QUILTED SUPPORT process for the exterior mattress fabric.

SC FIBER FILTER

FILTER FROM STERILIZED COTTON FIBERS offers ideal insulation and support.

GRAND RELIEF FOAM INN

Elastic foam specially designed for quilt treatment.

POLYESTER WAD

FORESTEX FABRIC™

7 YEARS GUARANTEE



This product has been tested for durability and complies with the requirements of the European standard: EN 1957: 2012 & EN 1334: 1999

Bodytopia

04 SHAPE MATTRESS

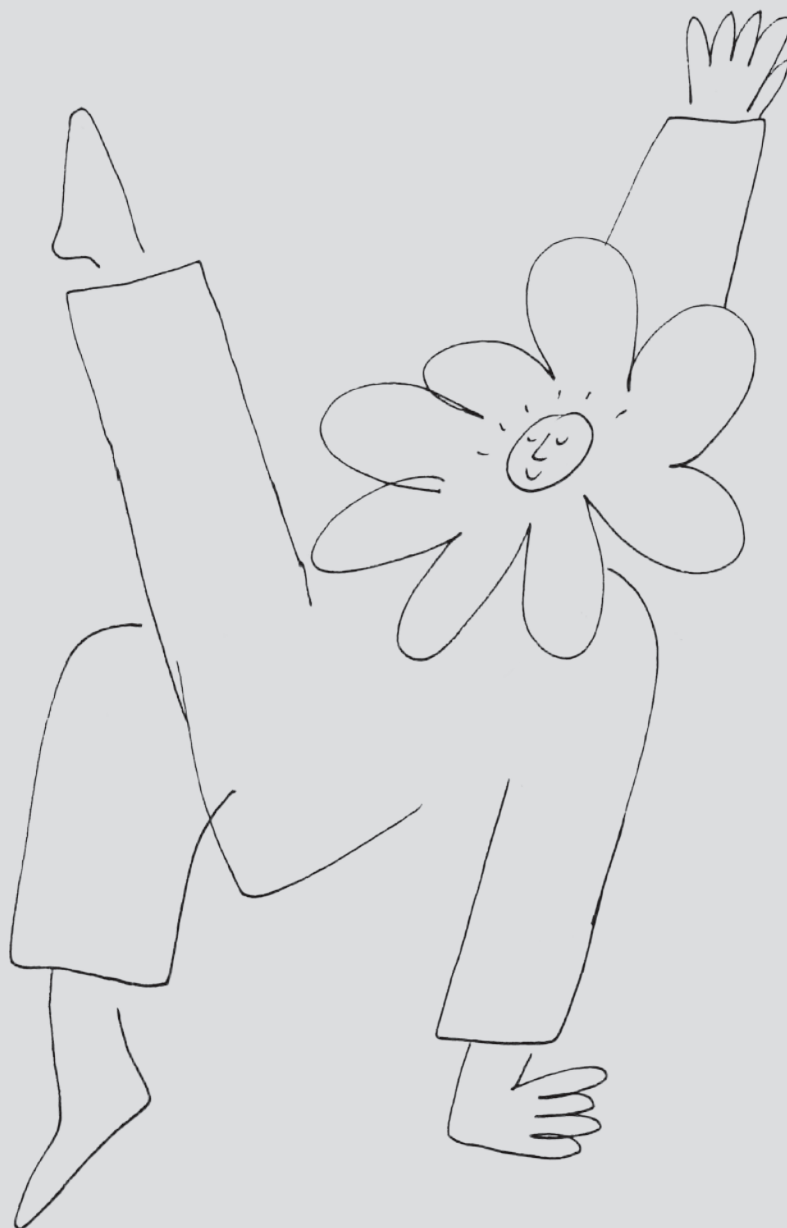
7 YEARS GUARANTEE

**PRODUCED IN
ALL DESIRE DIMENSIONS**

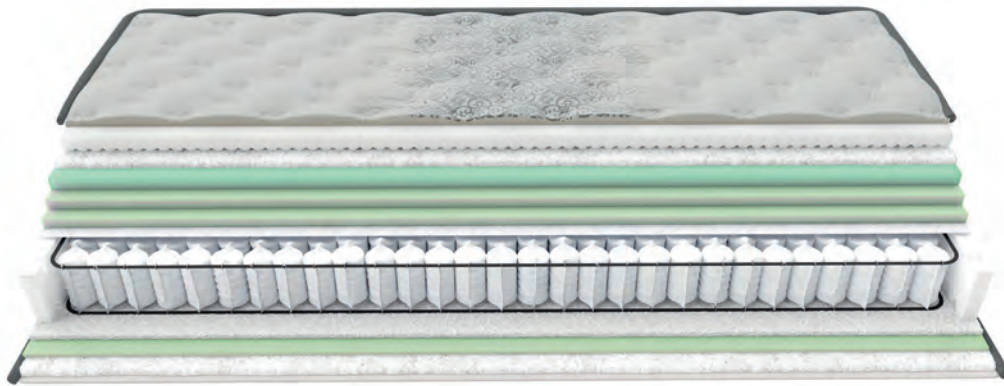
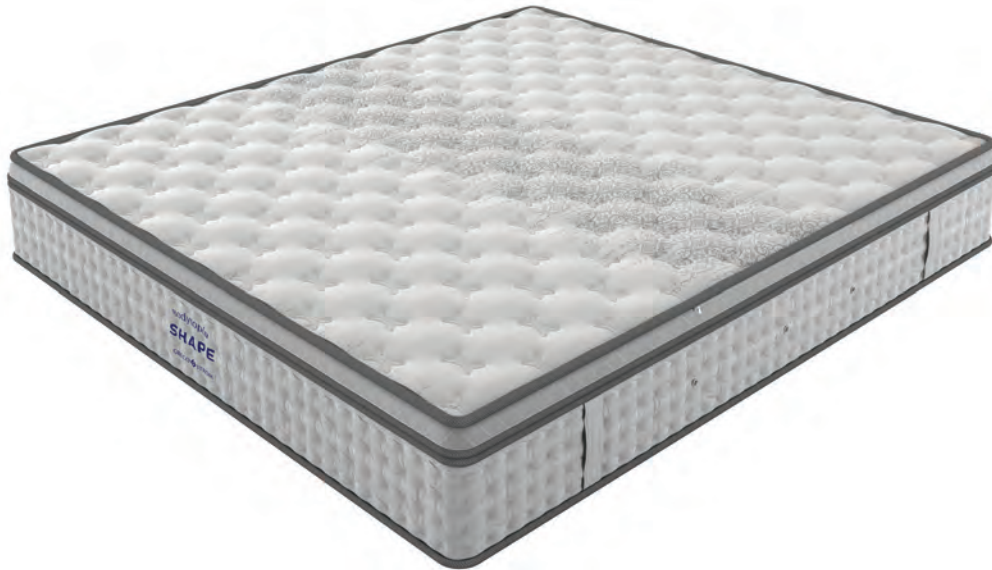
(+/-1 dimensional variation due to material nature)



Shape



Bodytopia



VENT & FRESH

Special open ventilation cells that ensure air circulation towards all directions in the mattress.

HANDLES

For easy rotation of the mattress.

ZIPPER

Allows the optical control of materials.

Shape

FORESTEX FABRIC™

FOR THE PRODUCTION OF FORESTEX FABRIC, we use yarn derived from a natural, renewable and biodegradable source, wood pulp. The special characteristic of this yarn is the cool and silky touch, a texture which gives a natural 'glow'. The FORESTEX fabric is highly breathable with very good moisture absorption characteristics and stands out for its thermoregulatory properties. In addition, it offers great comfort to movements while embracing harmoniously the body. The perfect combination of excellent durability, soft sensation and luxurious appearance.

BIO WAVE FOAM INN

SPECIAL CUT Foam with high elasticity. Thanks to its contemplated form, it absorbs vibration and adapts perfectly to the body shape. The weight is evenly distributed, providing a comfortable and healthy sleep. In addition, it protects against allergies and prevents the growth of bacteria.

POLYESTER WAD

WHITE WAD with certified hypoallergenic properties from 100% polyester antibacterial fiber. It allows the internal ventilation of the mattress and removes moisture. It has excellent strength, elasticity and resilience.

QUILTED HILL JUMP SYSTEM

QUILT PROCESS with JUMP system for extremely soft sensation, great rest and aesthetically perfect result achieved by state-of-the-art machines.

HR OPEN CELLS FOAM LAYER

HIGH LEVEL FOAM MATERIAL of the latest technology with thermoregulatory properties. Due to its open cellular structure, it allows the air to circulate inside the mattress. Also, its high density, ensures high elasticity, excellent restoration and durability even after years of use.

DOUBLE GRANT RELIEF FOAM LAYER

DOUBLE LAYER OF ERGONOMIC FOAM open structure and high flexibility for maximum performance of the mattress.

FLEXICOAT

A SPECIFIC FLEXIBLE AND RESISTANT 3D material, which works as an excellent raw material protection system, thus contributing to proper function and mattress comfort.

POCKETSPRINGS SCAN SYSTEM

THE ADVANCED SCAN SYSTEM TECHNOLOGY as well as the specially studied cylindrical shape of the independent springs, provide a high degree of support while their main advantage is the reduced sense of motion transfer. In addition, it ensures point support in any sleeping position you prefer, as well as noise avoidance. The rate of 260pcs per m² is maintained.

FRAME SUPPORT

STAINLESS STEEL FRAMEWORK SUPPORT ensures spring stabilization and mattress dimension.

UPPER BORDER SUPPORT SYSTEM

GRECO STROM through constant search and implementation of innovative technologies, has designed the new perimetric mattress support system, limiting recession in the process of the vertical pressure of its weight. It consists of increased density FOAM SUPPORT with special V-shaped notches along the sides and FOAM JUMP QUILTED SUPPORT process for the exterior mattress fabric.

SC FIBER FILTER

FILTER FROM STERILIZED COTTON FIBERS offers ideal insulation and support.

GRAND RELIEF FOAM INN

Elastic foam specially designed for quilt treatment.

POLYESTER WAD

FORESTEX FABRIC™

7 YEARS GUARANTEE



This product has been tested for durability and complies with the requirements of the European standard: EN 1957: 2012 & EN 1334: 1999

26

Bodytopia

05 SCHEME MATTRESS

7 YEARS GUARANTEE

**PRODUCED IN
ALL DESIRE DIMENSIONS**

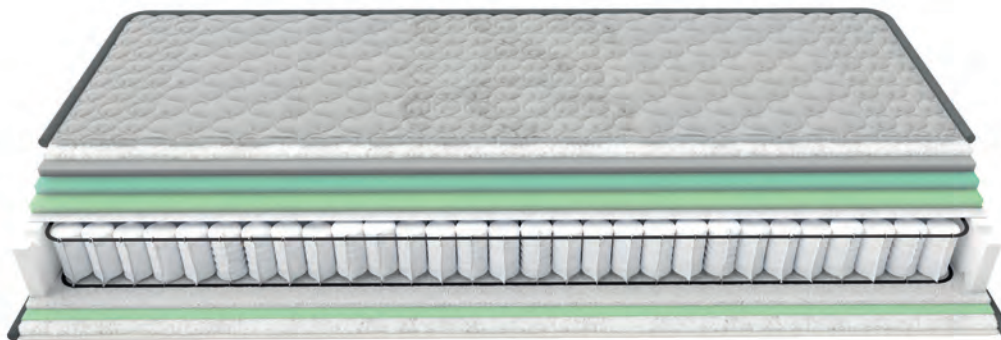
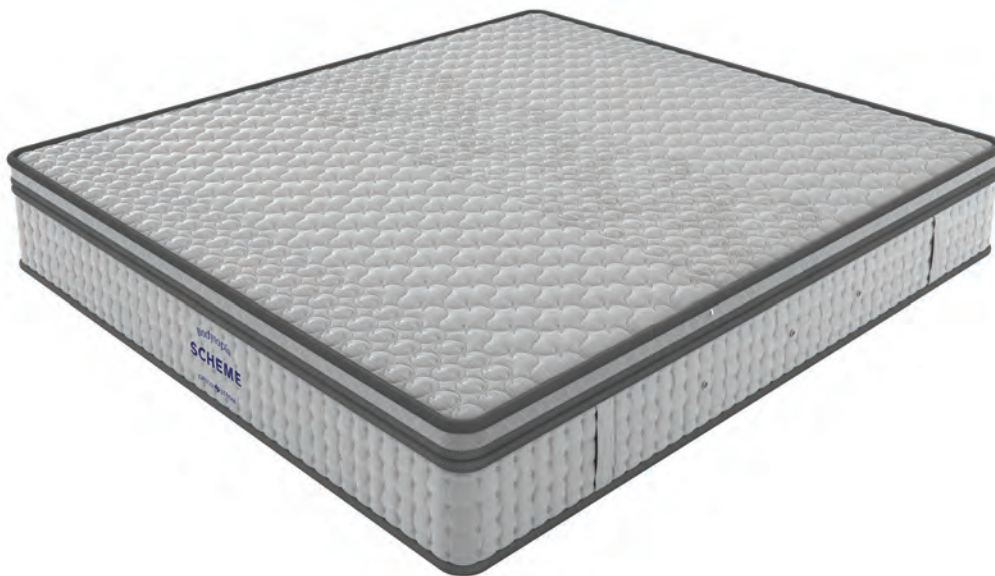
(+/-1 dimensional variation due to material nature)



Scheme



Bodytopia



VENT & FRESH

Special open ventilation cells that ensure air circulation towards all directions in the mattress.

HANDLES

For easy rotation of the mattress.

ZIPPER

Allows the optical control of materials.

Scheme

FORESTEX FABRIC™

FOR THE PRODUCTION OF FORESTEX FABRIC, we use yarn derived from a natural, renewable and biodegradable source, wood pulp. The special characteristic of this yarn is the cool and silky touch, a texture which gives a natural 'glow'. The FORESTEX fabric is highly breathable with very good moisture absorption characteristics and stands out for its thermoregulatory properties. In addition, it offers great comfort to movements while embracing harmoniously the body. The perfect combination of excellent durability, soft sensation and luxurious appearance.

POLYESTER WAD

WHITE WAD with certified hypoallergenic properties from 100% polyester antibacterial fiber. It allows the internal ventilation of the mattress and removes moisture. It has excellent strength, elasticity and resilience.

ACTIVE FOAM INN

SOFT AND DURABLE FOAM tested and suitable for quilted mattress treatment.

QUILTED HILL

QUILT PROCESS for extremely soft sensation, great rest and aesthetically perfect result achieved by state-of-the-art machines.

HR OPEN CELLS FOAM LAYER

HIGH LEVEL FOAM MATERIAL of the latest technology with thermoregulatory properties. Due to its open cellular structure, it allows the air to circulate inside the mattress. Also, its high density, ensures high elasticity, excellent restoration and durability even after years of use.

GRANT RELIEF FOAM LAYER

THE ABSOLUTE Foam Partner of HR OPEN CELLS FOAM LAYER. By combining these innovative materials, we succeed maximum performance behavior of the mattress.

FLEXCOAT

A SPECIFIC FLEXIBLE AND RESISTANT 3D material, which works as an excellent raw material protection system, thus contributing to proper function and mattress comfort.

POCKET SPRINGS SCAN SYSTEM

THE ADVANCED SCAN SYSTEM TECHNOLOGY as well as the specially studied cylindrical shape of the independent springs, provide a high degree of support while their main advantage is the reduced sense of motion transfer. In addition, it ensures point support in any sleeping position you prefer, as well as noise avoidance. The rate of 260pcs per m² is maintained.

FRAME SUPPORT

STAINLESS STEEL FRAMEWORK SUPPORT ensures spring stabilization and mattress dimension.

UPPER BORDER SUPPORT SYSTEM

GRECO STROM through constant search and implementation of innovative technologies, has designed the new perimeter mattress support system, limiting recession in the process of the vertical pressure of its weight. It consists of increased density FOAM SUPPORT with special V-shaped notches along the sides and FOAM JUMP QUILTED SUPPORT process for the exterior mattress fabric.

SC FIBER FILTER

FILTER FROM STERILIZED COTTON FIBERS offers ideal insulation and support.

GRAND RELIEF FOAM INN

Elastic foam specially designed for quilt treatment.

POLYESTER WAD

FORESTEX FABRIC™

7 YEARS GUARANTEE



This product has been tested for durability and complies with the requirements of the European standard: EN 1957: 2012 & EN 1334: 1999

Bodytopia

06 STRUCTURE MATTRESS

5 YEARS GUARANTEE

**PRODUCED IN
ALL DESIRE DIMENSIONS**

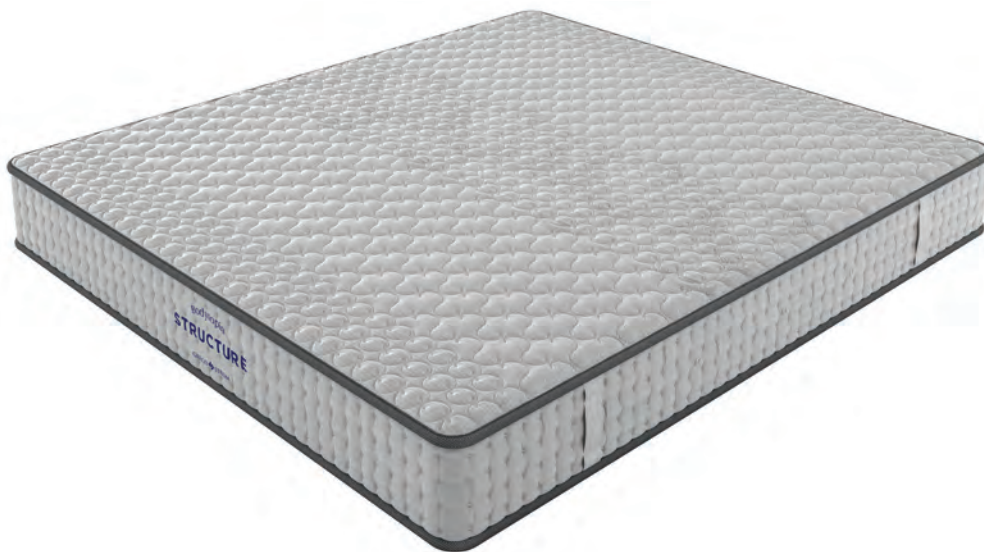
(+/-1 dimensional variation due to material nature)



Structure



Bodytopia



VENT & FRESH

Special open ventilation cells that ensure air circulation towards all directions in the mattress.

HANDLES

For easy rotation of the mattress.

ZIPPER

Allows the optical control of materials.

Structure

FORESTEX FABRIC™

FOR THE PRODUCTION OF FORESTEX FABRIC, we use yarn derived from a natural, renewable and biodegradable source, wood pulp. The special characteristic of this yarn is the cool and silky touch, a texture which gives a natural 'glow'. The FORESTEX fabric is highly breathable with very good moisture absorption characteristics and stands out for its thermoregulatory properties. In addition, it offers great comfort to movements while embracing harmoniously the body. The perfect combination of excellent durability, soft sensation and luxurious appearance.

POLYESTER WAD

WHITE WAD with certified hypoallergenic properties from 100% polyester antibacterial fiber. It allows the internal ventilation of the mattress and removes moisture. It has excellent strength, elasticity and resilience.

ACTIVEFOAMINN

SOFT AND DURABLE FOAM tested and suitable for quilted mattress treatment.

QUILTED HILL

QUILT PROCESS for extremely soft sensation, great rest and aesthetically perfect result achieved by state-of-the-art machines.

GRANT RELIEF FOAM LAYER

FOAM LAYER which allows internal ventilation and works perfectly with the ACTIVE FOAM INN. The result is the maximum performance behavior of the mattress.

SC FIBER FILTER

SOFT AND DURABLE FOAM tested and suitable for quilted mattress treatment.

POCKET SPRINGS SCAN SYSTEM

THE ADVANCED SCAN SYSTEM TECHNOLOGY as well as the specially studied cylindrical shape of the independent springs, provide a high degree of support while their main advantage is the reduced sense of motion transfer. In addition, it ensures point support in any sleeping position you prefer, as well as noise avoidance. The rate of 260pcs per m² is maintained.

FRAME SUPPORT

STAINLESS STEEL FRAMEWORK SUPPORT ensures spring stabilization and mattress dimension.

UPPER BORDER SUPPORT SYSTEM

GRECO STROM through constant search and implementation of innovative technologies, has designed the new perimetric mattress support system, limiting recession in the process of the vertical pressure of its weight. It consists of increased density FOAM SUPPORT with special V-shaped notches along the sides and FOAM JUMP QUILTED SUPPORT process for the exterior mattress fabric.

5 YEARS GUARANTEE



This product has been tested for durability and complies with the requirements of the European standard: EN 1957: 2012 & EN 1334: 1999

34

Bodytopia

07 PROFILE MATTRESS

5 YEARS GUARANTEE

**PRODUCED IN
ALL DESIRE DIMENSIONS**

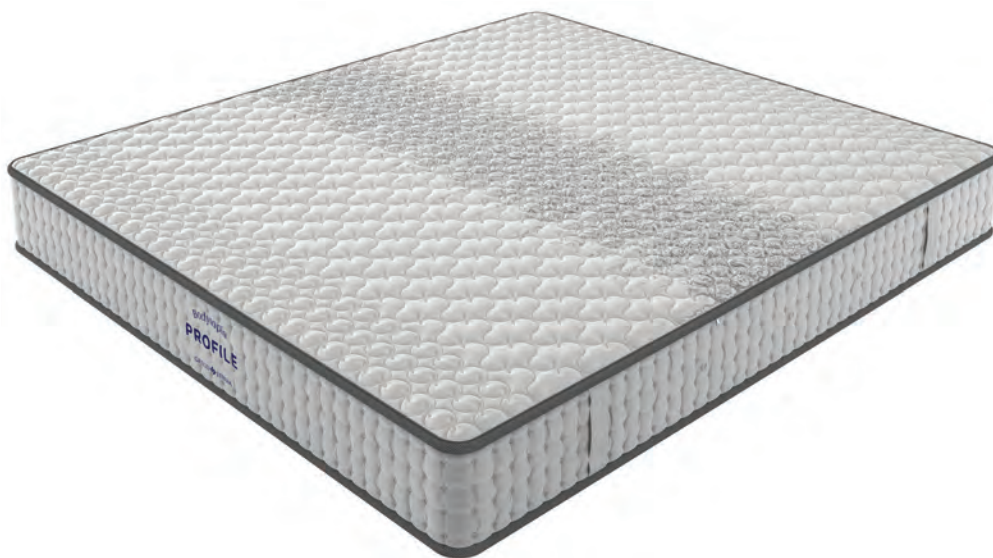
(+/-1 dimensional variation due to material nature)



Profile



Bodytopia



VENT & FRESH

Special open ventilation cells that ensure air circulation towards all directions in the mattress.

HANDLES

For easy rotation of the mattress.

ZIPPER

Allows the optical control of materials.

Profile

FORESTEX FABRIC™

FOR THE PRODUCTION OF FORESTEX FABRIC, we use yarn derived from a natural, renewable and biodegradable source, wood pulp. The special characteristic of this yarn is the cool and silky touch, a texture which gives a natural 'glow'. The FORESTEX fabric is highly breathable with very good moisture absorption characteristics and stands out for its thermoregulatory properties. In addition, it offers great comfort to movements while embracing harmoniously the body. The perfect combination of excellent durability, soft sensation and luxurious appearance.

POLYESTER WAD

WHITE WAD with certified hypoallergenic properties from 100% polyester antibacterial fiber. It allows the internal ventilation of the mattress and removes moisture. It has excellent strength, elasticity and resilience.

ACTIVE FOAM INN

SOFT AND DURABLE FOAM tested and suitable for quilted mattress treatment.

QUILTED HILL

QUILT PROCESS for extremely soft sensation, great rest and aesthetically perfect result achieved by state-of-the-art machines.

INTEX FOAM LAYER

ITS EXCEPTIONAL FLEXIBILITY allows it to evenly distribute weight, which prevents the creation of pressure points. In addition, it is breathable and helps maintain the ideal sleeping temperature.

POCKETSPRINGS SCAN SYSTEM

THE ADVANCED SCAN SYSTEM TECHNOLOGY as well as the specially studied cylindrical shape of the independent springs, provide a high degree of support while their main advantage is the reduced sense of motion transfer. In addition, it ensures point support in any sleeping position you prefer, as well as noise avoidance. The rate of 260pcs per m² is maintained.

FRAMESUPPORT

STAINLESS STEEL FRAMEWORK SUPPORT ensures spring stabilization and mattress dimension.

UPPERBORDERSUPPORTSYSTEM

GRECO STROM through constant search and implementation of innovative technologies, has designed the new perimetric mattress support system, limiting recession in the process of the vertical pressure of its weight. It consists of increased density FOAM SUPPORT with special V-shaped notches along the sides and FOAM JUMP QUILTED SUPPORT process for the exterior mattress fabric.

5 YEARS GUARANTEE



This product has been tested for durability and complies with the requirements of the European standard:
EN 1957: 2012 & EN 1334: 1999

What is your



ATHENS MATTESSES LTD "GRECO STROM" a purely Greek company,
has been involved in the manufacturing of mattresses, beds and sleep products for over 61 years
while successfully operating in hotel, medical, marine and hospital equipment,
as well as with absolute respect and sensitivity in baby sleep products.

For further information visit our homepage:

grecostrom.gr



Wake Up
New